



Western Michigan University  
ScholarWorks at WMU

---

Legacy Scout Tickets from Pure Oil Company

---

8-20-2021

## MGRRE\_PureOilScoutTickets\_Bernard, A.\_2\_na

MGRRE

*Western Michigan University*

Follow this and additional works at: <https://scholarworks.wmich.edu/pure>



Part of the Geology Commons

---

### WMU ScholarWorks Citation

MGRRE, "MGRRE\_PureOilScoutTickets\_Bernard, A.\_2\_na" (2021). *Legacy Scout Tickets from Pure Oil Company*. 5488.

<https://scholarworks.wmich.edu/pure/5488>

This Document is brought to you for free and open access via ScholarWorks at WMU. It has been accepted for inclusion in Legacy Scout Tickets from Pure Oil Company by an authorized administrator of ScholarWorks at WMU. See the National Digital Catalogue - Science Base Catalogue for more collections submitted by MGRRE.



---

## MGRRE\_PureOilScoutTickets\_Bernard, A.\_2\_na

API na

Permit Number na

Lease Name Bernard, A.

Well Number 2

County Midland

Township 14N

Range 02W

Section 8

2021 DEQ or Pure co\_name Braniger, Giffert & Ressor

Pure Number 548

Latitude 43.6186951

Longitude -84.578362

## THE PURE OIL COMPANY

DATE December 15, 1933

## LOCATION REPORT

No. 548

STATE Michigan COUNTY Midland DIST. Greendale SEC. 8 TOWN 14 N RANGE 2 W  
 WELL No. 2 (SERIAL No. 548) FARM A. Bernard ACRES

NAME OF STREAM OR WATERS QUADRANGLE NW-SE-SE  
 OPERATOR Branigar, Giffert & Reasor MAP Greendale Township, Midland County

330 Feet from North Line of Farm

" " East " " "

" " South " " "

330 " " West " " "

Feet from North Line of Section

990 " " East " " "

990 " " South " " "

" " West " " "

## LEGEND

O LOCATION

① RIG

⊕ DRILLING

⊗ GAS WELL

● OIL WELL

⬮ SMALL OIL WELL

⬮ DRY HOLE

⬮ DRY SHOWING OIL

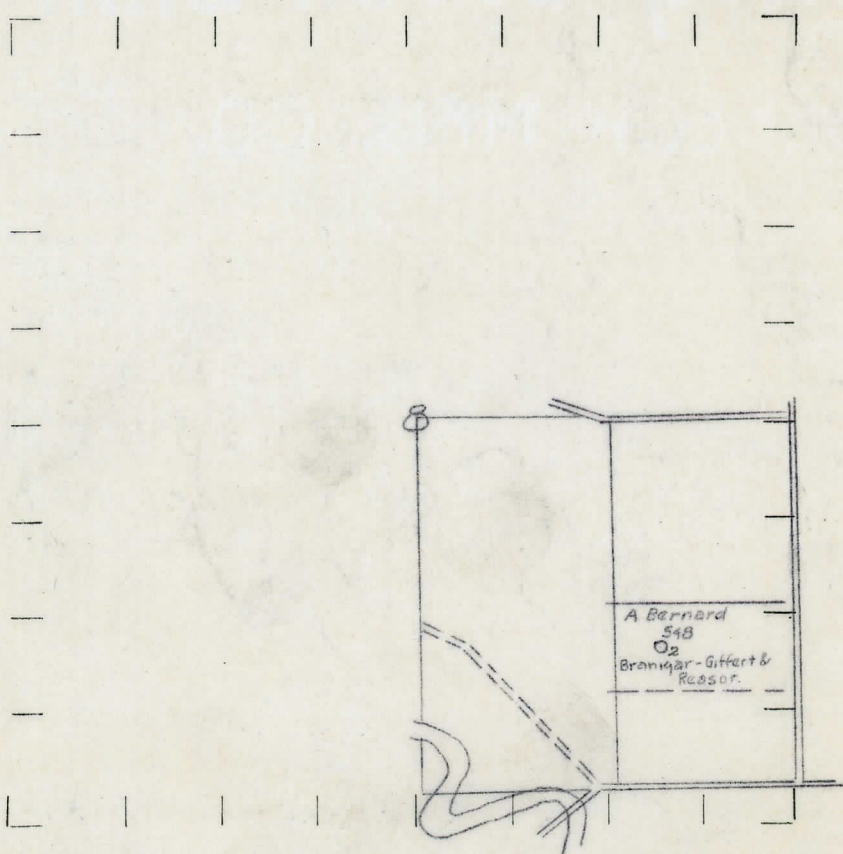
⬮ DRY SHOWING GAS

⬮ ABANDONED LOCATION

⬮ ABANDONED GAS WELL

⬮ ABANDONED OIL WELL

NOTE: Below make tracing from map, (when no map is obtainable make sketch) showing farm, center of section, this location with measurements and also wells, dry holes, or other locations in the vicinity of this location. Make copy to keep for reference and send original to Columbus office.



REMARKS:

SIGNED

*R.L. Reaser*  
 Superintendent or Foreman.



Michigan Producing DIVISION

## COMPLETION RECORD

No. 548

WELL No. 2 (SERIAL No. 548) FARM A. Bernard ACRES

NAME OF STREAM OR WATERS \_\_\_\_\_ QUADRANGLE NW-SE-SE

OPERATOR Breniger, Giffert & Reasor MAP Greendale Township, Midland County

LOCATION REPORT SENT IN (DATE) 12/15/34

WELL STARTED (DATE) Not started WELL COMPLETED (DATE) Not completed

## OIL WELL.

## GAS WELL

DRY HOLE

## ABANDONED WELL

CROSS OUT THREE OF THE ABOVE  
WELL RECORD

DATE OF SHOT \_\_\_\_\_ NUMBER OF QUARTS \_\_\_\_\_

<b>1st</b>	<b>24 HOURS PRODUCTION</b>	<b>LOCATION ABANDONED</b>	<b>BARRELS OR FEET</b>
------------	----------------------------	---------------------------	------------------------

2nd " " " " " " " " " "

3rd " " " " " "

4th " " " " " "

5th " " " " " "

## SAND AND CASING

[illegible]

REMARKS	Location abandoned 5/8/34
---------	---------------------------

**SIGNED**

G. H. Bell

2 SUPT. OR FOREMAN