



Western Michigan University
ScholarWorks at WMU

Legacy Scout Tickets from Pure Oil Company

8-20-2021

MGRRE_PureOilScoutTickets_Bond Heirs "A"_1_21111018360000

MGRRE

Western Michigan University

Follow this and additional works at: <https://scholarworks.wmich.edu/pure>



Part of the Geology Commons

WMU ScholarWorks Citation

MGRRE, "MGRRE_PureOilScoutTickets_Bond Heirs "A"_1_21111018360000" (2021). *Legacy Scout Tickets from Pure Oil Company*. 5489.

<https://scholarworks.wmich.edu/pure/5489>

This Document is brought to you for free and open access via ScholarWorks at WMU. It has been accepted for inclusion in Legacy Scout Tickets from Pure Oil Company by an authorized administrator of ScholarWorks at WMU. See the National Digital Catalogue - Science Base Catalogue for more collections submitted by MGRRE.



MGRRE_PureOilScoutTickets_Bond Heirs "A"_1_21111018360000

API 21111018360000

Permit Number 1836

Lease Name Bond Heirs "A"

Well Number 1

County Midland

Township 14N

Range 02W

Section 14

2021 DEQ or Pure co_name Oryx Energy Company

Pure Number 549

Latitude 43.60884

Longitude -84.52712

WELL REPORT - OUTSIDE OPERATIONS

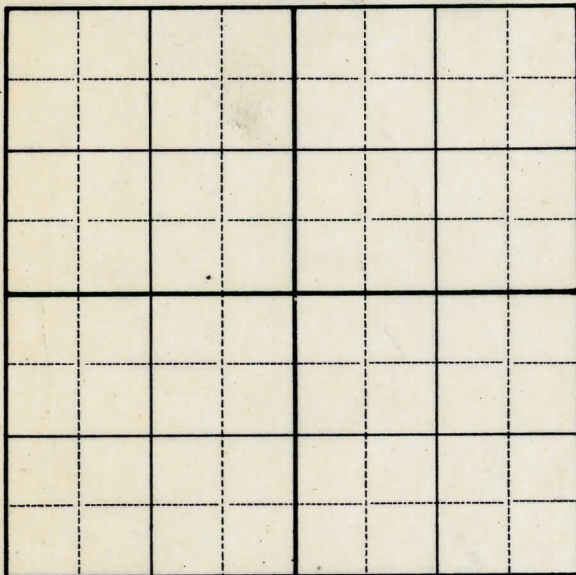
SERIAL NO. 549STATE Michigan ~~DEPT~~ CO. MidlandOPERATOR Raymond JonesFARM Bond Heirs WELL NO. "A" 1TWP. Greendale S. 14 T. 14N R. 2W
~~SURVEY~~LOC. SW NW NW NW - SW - NWWILDCAT ☐ FIELD ☐ FIELD NAME _____

MAP NO. _____ CO-ORD. _____ ELEV. _____

STATUS _____

Operator's name corrected from:
Frank Mortimore & Raymond Jones

NORTH

DATE 2-15-54 SCOUT JEC

SERIAL NO. 549

STATE Michigan ~~PSH~~ CO. Midland

OPERATOR Frank Mortimore and Raymond Jones

FARM Bond-Heirs "A" WELL NO. 1

TWP. SURVEY Greendale S. 14 T. 14N R. 2W

LOC. NW SW NW

WILDCAT ☐ FIELD ☐ FIELD NAME

MAP NO. CO-ORD. ELEV.

STATUS

Correcting Operator's Name from Michi-Oil Inc.,
to Frank Mortimore and Raymond Jones.

NORTH

DATE 2-6-48 SCOUT HJG

DATE March 24, 1938

Corrected

THE PURE OIL COMPANY

LOCATION REPORT

No. 549

STATE Michigan

COUNTY Midland

DIST. Greendale

TWP. Greendale

SEC. 14

TOWN 14 N

RANGE 2 W

WELL No. 1 (SERIAL No. 549) FARM

PREC. Bond-Heirs "A"

ACRES

NAME OF STREAM OR WATERS

QUADRANGLE

NW-SW-NW
NW SW NW

OPERATOR Michi-Oil, Inc.

Map

Greendale Township, Midland County

Michi-Oil Inc.

Greendale - Mid.

Feet from North Line of Farm

" " East " " "

" " South " " "

" " West " " "

139 1398

Feet from North Line of Section

" " East " " "

" " South " " "

330 330

" " West " " "

LEGEND

○ LOCATION

① RIG

⊕ DRILLING

☼ GAS WELL

● OIL WELL

⦿ SMALL OIL WELL

⊖ DRY HOLE

⦿ DRY SHOWING OIL

⦿ DRY SHOWING GAS

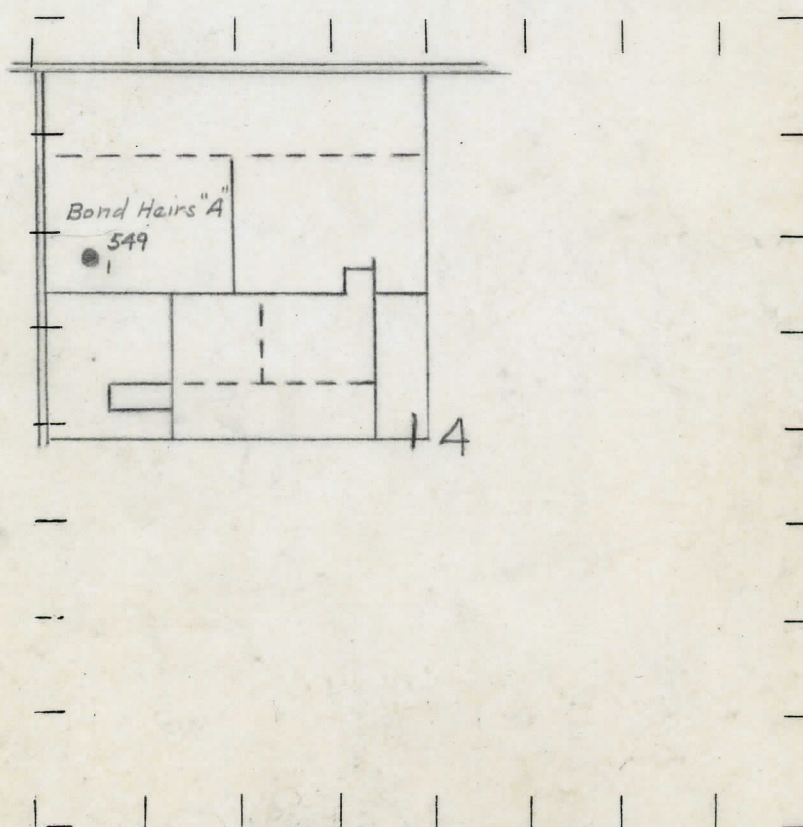
⦿ ABANDONED LOCATION

☼ ABANDONED GAS WELL

⦿ ABANDONED OIL WELL

NOTE: Below make tracing from map, (when no map is obtainable make sketch) showing farm, center of section, this location with measurements and also wells, dry holes, or other locations in the vicinity of this location.

Frank Mortimore
and
Raymond Jones



REMARKS: Change in Operator.

SIGNED

R. L. Yeager
Superintendent or Foreman.

DATE April 1, 1937

Collected

LOCATION REPORT

No. 377

STATE Michigan COUNTY Midland DIST. Greendale SEC. 14 TOWN 14 N RANGE 2 W
WELL No. 1 (SERIAL No. 549) FARM Bond Heirs "A" ACRES 2 W.

NAME OF STREAM OR WATERS _____ QUADRANGLE NW-SW-NW
NW SW NW

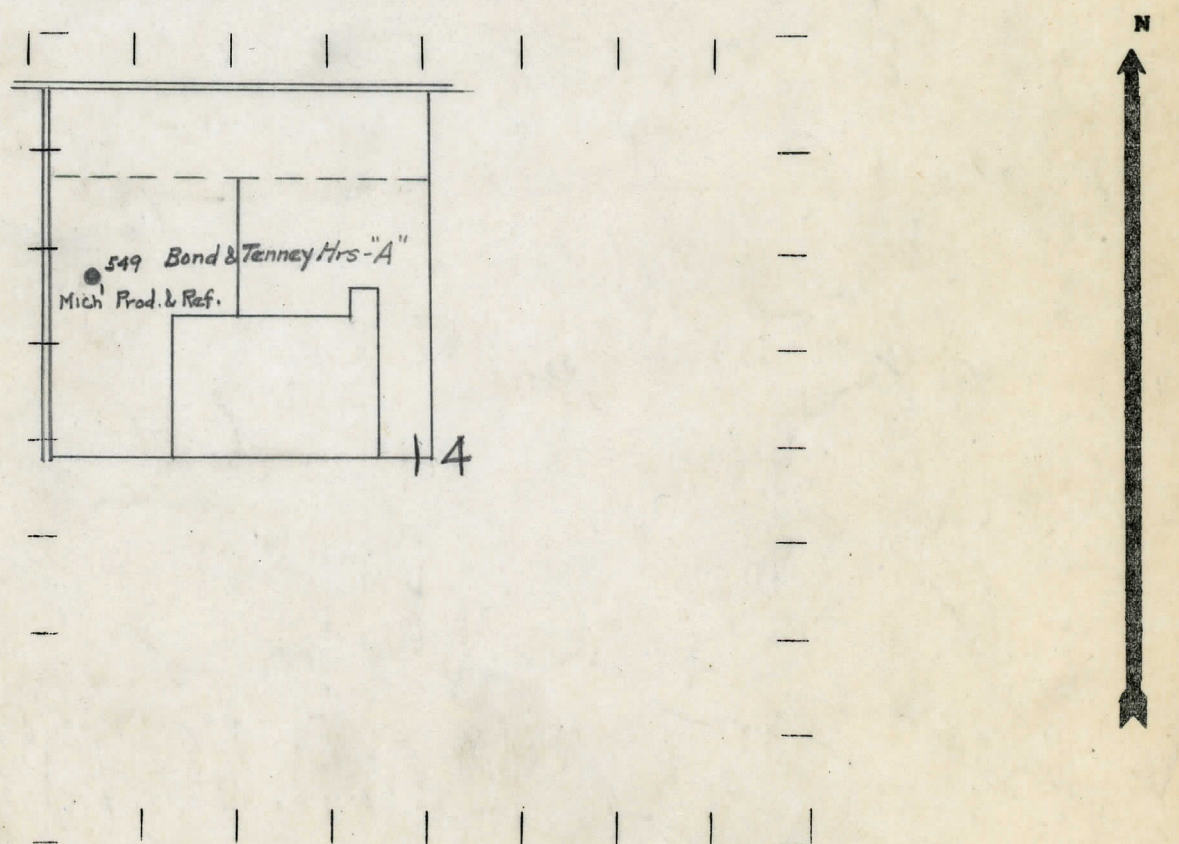
OPERATOR Michigan Producers & Refining Company Map Greendale Township, Midland County
Mich. Prod. & Refiners Co. Greendale - Mid.

_____ Feet from North Line of Farm
" " East " " "
" " South " " "
" " West " " "

1398 1398 Feet from North Line of Section
" " East " " "
" " South " " "
320 330 " " West " " "

- LEGEND**
- LOCATION
 - ⊙ RIG
 - ⊕ DRILLING
 - ☼ GAS WELL
 - OIL WELL
 - ⬮ SMALL OIL WELL
 - ⊙ DRY HOLE
 - ⊕ DRY SHOWING OIL
 - ☼ DRY SHOWING GAS
 - ⊙ ABANDONED LOCATION
 - ☼ ABANDONED GAS WELL
 - ⬮ ABANDONED OIL WELL

NOTE: Below make tracing from map, (when no map is obtainable make sketch) showing farm, center of section, this location with measurements and also wells, dry holes, or other locations in the vicinity of this location.



REMARKS: _____

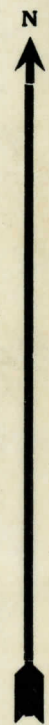
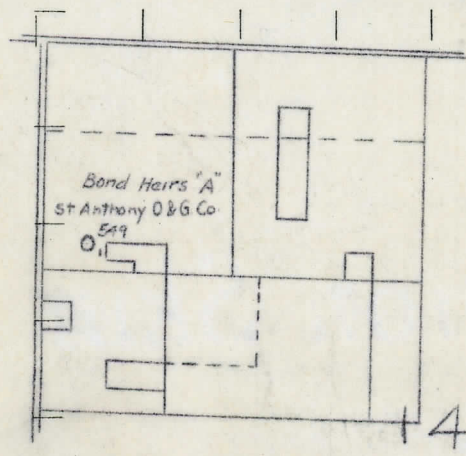
SIGNED R. D. Yeager
Superintendent or Foreman.

DATE May 12 1991 LOCATION REPORT No. 347
STATE Michigan COUNTY Midland DIST. Greendale SEC. 14 TOWN 14 N RANGE 2 W
WELL No. 1 (SERIAL No. 549) FARM Bond Heirs "A" ACRES
NAME OF STREAM OR WATERS _____ QUADRANGLE NW SW NW
OPERATOR St. Anthony Oil & Gas Co. MAP Greendale Township, Midland County

_____ Feet from North Line of Farm
_____ " " East " " "
_____ " " South " " "
_____ " " West " " "
1398 Feet from North Line of Section
_____ " " East " " "
_____ " " South " " "
330 " " West " " "

- LEGEND**
- | | |
|------------------|----------------------|
| ○ LOCATION | ✦ DRY HOLE |
| ① RIG | ✦ DRY SHOWING OIL |
| ⊕ DRILLING | ✦ DRY SHOWING GAS |
| ⊗ GAS WELL | ⊗ ABANDONED LOCATION |
| ● OIL WELL | ✦ ABANDONED GAS WELL |
| ⬤ SMALL OIL WELL | ⬤ ABANDONED OIL WELL |

NOTE: Below make tracing from map, (when no map is obtainable make sketch) showing farm, center of section, this location with measurements and also wells, dry holes, or other locations in the vicinity of this location. Make copy to keep for reference and send original to Columbus office.



REMARKS:

SIGNED R. L. Yeager
Superintendent or Foreman.

THE PURE OIL COMPANY

Michigan Producing DIVISION

DATE April 6, 1934

COMPLETION RECORD

No. 549

STATE Michigan COUNTY Midland DIST. Greendale TWP. 14 SEC. 14 TOWN 14 N RANGE 2 W

DIST.
TWP. Greendale
PREC.

WELL No. 1 (SERIAL No. 549) FARM Bond Heirs "A" _____ ACRES _____

NAME OF STREAM OR WATERS _____ QUADRANGLE **NW-SW-NW**

OPERATOR St. Anthony Oil & Gas Co. MAP Greendale Township, Midland County

LOCATION REPORT SENT IN (DATE) 12/5/33

WELL STARTED (DATE) 12/27/33 WELL COMPLETED (DATE) 3/7/34

OIL WELL

HCH-581(2/540)

ADRIAN HONE

ABANDONED WEIR

CROSS OUT THREE OF THE ABOVE

Elevation 684.8'

WELL RECORD

DATE OF SHOT	Acid	Gallons
3/28/34		1000

1st 24 HOURS PRODUCTION Est. 25 bbls. natural BARRELS OR FEET

1st	"	"	"	"	190	"	after acid	"	"	"
-----	---	---	---	---	-----	---	------------	---	---	---

3rd " " "

" " "

4th " " " " " "

5th " " "

SAND AND CASING

[illegible]

REMARKS	NOTE: Pumped 330 bbls. net 1st 45 hrs., after acid.
---------	---

NOTE:—MAKE COPY TO KEEP FOR REFERENCE AND SEND ORIGINAL TO CHICAGO OFFICE. LIST MATERIAL CHARGEABLE TO WELL ON OTHER SIDE.

SIGNED.

SUPT. OR FOREMAN