



Western Michigan University  
ScholarWorks at WMU

---

Legacy Scout Tickets from Pure Oil Company

---

8-20-2021

**MGRRE\_PureOilScoutTickets\_Breu, W. C.\_1\_21111018390000**

MGRRE

*Western Michigan University*

Follow this and additional works at: <https://scholarworks.wmich.edu/pure>



Part of the Geology Commons

---

#### WMU ScholarWorks Citation

MGRRE, "MGRRE\_PureOilScoutTickets\_Breu, W. C.\_1\_21111018390000" (2021). *Legacy Scout Tickets from Pure Oil Company*. 5491.

<https://scholarworks.wmich.edu/pure/5491>

This Document is brought to you for free and open access via ScholarWorks at WMU. It has been accepted for inclusion in Legacy Scout Tickets from Pure Oil Company by an authorized administrator of ScholarWorks at WMU. See the National Digital Catalogue - Science Base Catalogue for more collections submitted by MGRRE.



---

**MGRRE\_PureOilScoutTickets\_Breu, W. C.\_1\_21111018390000**

API 21111018390000

Permit Number 1839

Lease Name Breu, W. C.

Well Number 1

County Midland

Township 13N

Range 01W

Section 20

2021 DEQ or Pure co\_name Stork, Fred W.

Pure Number 553

Latitude 43.50165

Longitude -84.45067

## THE PURE OIL COMPANY

DATE July 12, 1938

## LOCATION REPORT

No. 553STATE Michigan COUNTY Midland DISTRICT Porter TWP. Porter SEC. 20 TOWN 13 N RANGE 1 WWELL No. 1 (SERIAL No. 553) FARM W. C. Breu ACRESNAME OF STREAM OR WATERS QUADRANGLE NE NE SEOPERATOR F. W. Stork Map Porter Township, Midland County

Feet from North Line of Farm

" " East " " "

" " South " " "

" " West " " "

Feet from North Line of Section

" " East " " "

" " South " " "

" " West " " "

## LEGEND

○ LOCATION

① RIG

⊕ DRILLING

☼ GAS WELL

● OIL WELL

⦿ SMALL OIL WELL

⊙ DRY HOLE

⦿ DRY SHOWING OIL

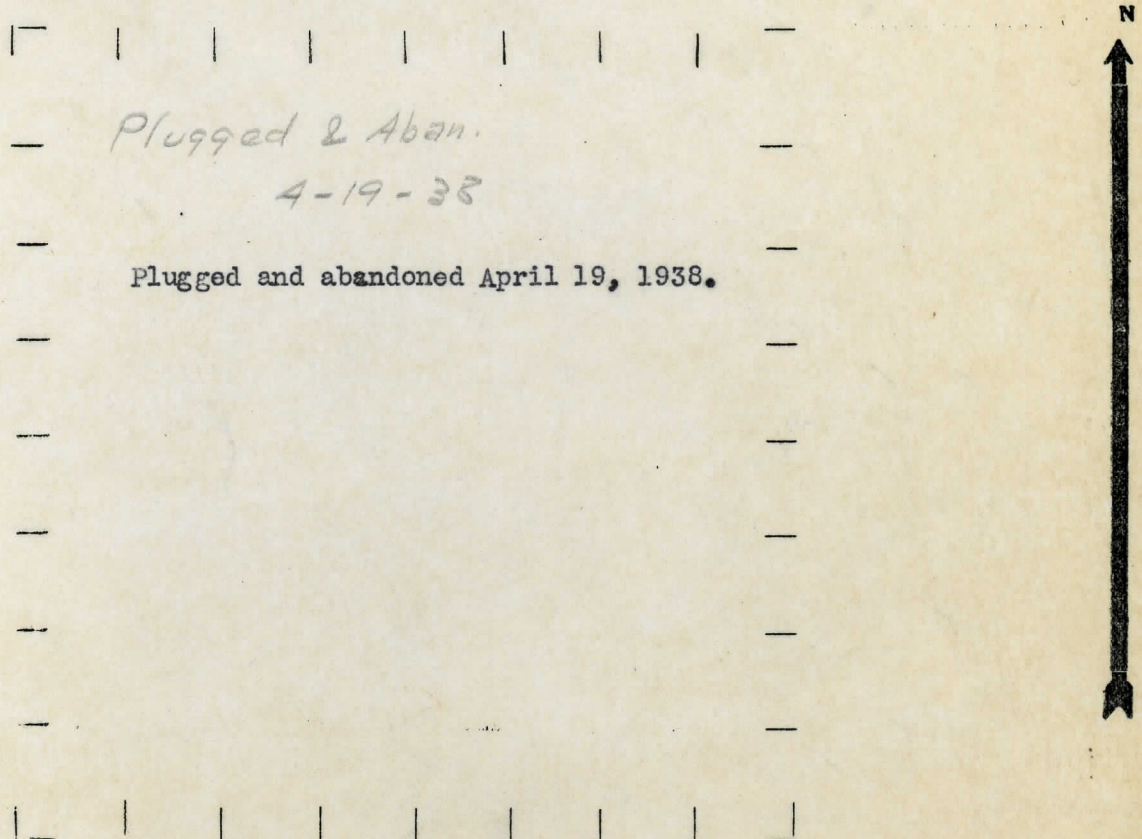
⦿ DRY SHOWING GAS

⦿ ABANDONED LOCATION

☼ ABANDONED GAS WELL

⦿ ABANDONED OIL WELL

NOTE: Below make tracing from map, (when no map is obtainable make sketch) showing farm, center of section, this location with measurements and also wells, dry holes, or other locations in the vicinity of this location.



REMARKS:

SIGNED

Superintendent or Foreman.



DATE Dec. 22, 1933

LOCATION REPORT

No. 333

STATE Michigan COUNTY Midland DIST. Porter SEC. 20 TOWN 13 N RANGE 1 W  
WELL No. 1 (SERIAL No. 553) FARM W. C. Breu ACRES

NAME OF STREAM OR WATERS QUADRANGLE NE-NE-SE

OPERATOR Fred W. Stork MAP Porter Township, Midland County

330' Feet from North Line of Farm

330 " " East " " "

" " South " " "

" " West " " "

330 Feet from North Line of Section

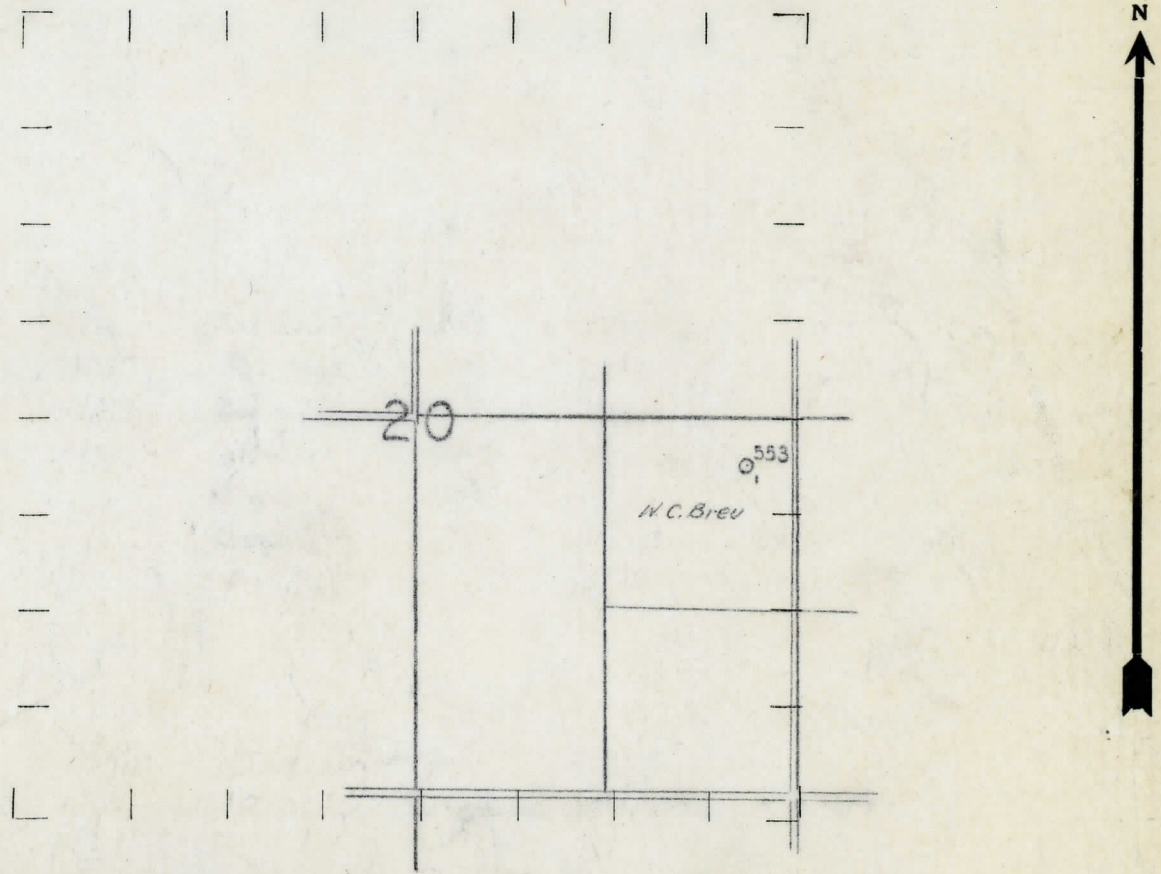
" " East " " "

2310 " " South " " "

" " West " " "

- LEGEND
- O LOCATION
  - ① RIG
  - ⊕ DRILLING
  - ⊙ GAS WELL
  - OIL WELL
  - ⬮ SMALL OIL WELL
  - ⬮ DRY HOLE
  - ⬮ DRY SHOWING OIL
  - ⬮ DRY SHOWING GAS
  - ⬮ ABANDONED LOCATION
  - ⬮ ABANDONED GAS WELL
  - ⬮ ABANDONED OIL WELL

NOTE: Below make tracing from map, (when no map is obtainable make sketch) showing farm, center of section, this location with measurements and also wells, dry holes, or other locations in the vicinity of this location. Make copy to keep for reference and send original to Columbus office.



REMARKS:

SIGNED R. L. Yeager  
Superintendent or Foreman.



THE PURE OIL COMPANY

DIVISION

# COMPLETION RECORD

No. 553

STATE Michigan

COUNTY Midland

DIST.  
TWP. Forter  
PREC.

SEC. 20

TOWN 13 N RANGE 1 W

WELL No. 1 (SERIAL No. 553) FARM W. C. Brou ACRES 40

NAME OF STREAM OR WATERS		QUADRANGLE	NE-NE-SE
--------------------------	--	------------	----------

OPERATOR Fred W. Stork MAP Porter Township, Midland County

LOCATION REPORT SENT IN (DATE) 12/22/33

WELL STARTED (DATE) 2/14/34 WELL COMPLETED (DATE) 4/29/34

## OIL WELL

**CASTLEFIELD**

**DRUGS**

**PARADISE DIVINE**

Elevation 689'

CROSS OUT THREE OF THE ABOVE  
WELL RECORD

DATE OF SHOT \_\_\_\_\_ NUMBER OF QUARTS \_\_\_\_\_

1st 24 HOURS PRODUCTION 1320 bbls., natural BARRELS OR FEET

[illegible]

3rd " " "

" " "

4th " " " " " "

5th " " " " " "

## SAND AND CASING

[illegible]

REMARKS	Show Oil & Gas 2800-2810'	Potential 1584 bbls.
---------	---------------------------	----------------------

NOTE:—MAKE COPY TO KEEP FOR REFERENCE AND SEND ORIGINAL TO CHICAGO OFFICE. LIST MATERIAL CHARGEABLE TO WELL ON OTHER SIDE.

SIGNED

**SUPT. OR FOREMAN**