



Western Michigan University  
ScholarWorks at WMU

---

Legacy Scout Tickets from Pure Oil Company

---

8-20-2021

**MGRRE\_PureOilScoutTickets\_Breu, Eliza\_1\_21111019070000**

MGRRE

*Western Michigan University*

Follow this and additional works at: <https://scholarworks.wmich.edu/pure>



Part of the Geology Commons

---

#### WMU ScholarWorks Citation

MGRRE, "MGRRE\_PureOilScoutTickets\_Breu, Eliza\_1\_21111019070000" (2021). *Legacy Scout Tickets from Pure Oil Company*. 5508.

<https://scholarworks.wmich.edu/pure/5508>

This Document is brought to you for free and open access via ScholarWorks at WMU. It has been accepted for inclusion in Legacy Scout Tickets from Pure Oil Company by an authorized administrator of ScholarWorks at WMU. See the National Digital Catalogue - Science Base Catalogue for more collections submitted by MGRRE.



---

MGRRE\_PureOilScoutTickets\_Breu, Eliza\_1\_21111019070000

API 21111019070000

Permit Number 1907

Lease Name Breu, Eliza

Well Number 1

County Midland

Township 13N

Range 01W

Section 20

2021 DEQ or Pure co\_name McClanahan Oil Company

Pure Number 588

Latitude 43.50171

Longitude -84.45804

## THE PURE OIL COMPANY

DATE October 6, 1936

## LOCATION REPORT

No. 588

STATE Michigan COUNTY Midland DIST. Porter SEC. 20 TOWN 13 N RANGE 1 W  
 WELL No. 11 (SERIAL No. 588) FARM Eliza Breu ACRES

NAME OF STREAM OR WATERS \_\_\_\_\_ QUADRANGLE NW-NW-SEOPERATOR McClanahan Oil Company Map Porter Township, Midland CountyMcClanahan Oil Co.Porter - Mid Co

Feet from North Line of Farm

" " East " " "

" " South " " "

" " West " " "

330330 Feet from North Line of Section 1/4

" " East " " "

" " South " " "

330330 " " West " 1/4

## LEGEND

O LOCATION

① RIG

⊕ DRILLING

☼ GAS WELL

● OIL WELL

◆ SMALL OIL WELL

⊙ DRY HOLE

◆ DRY SHOWING OIL

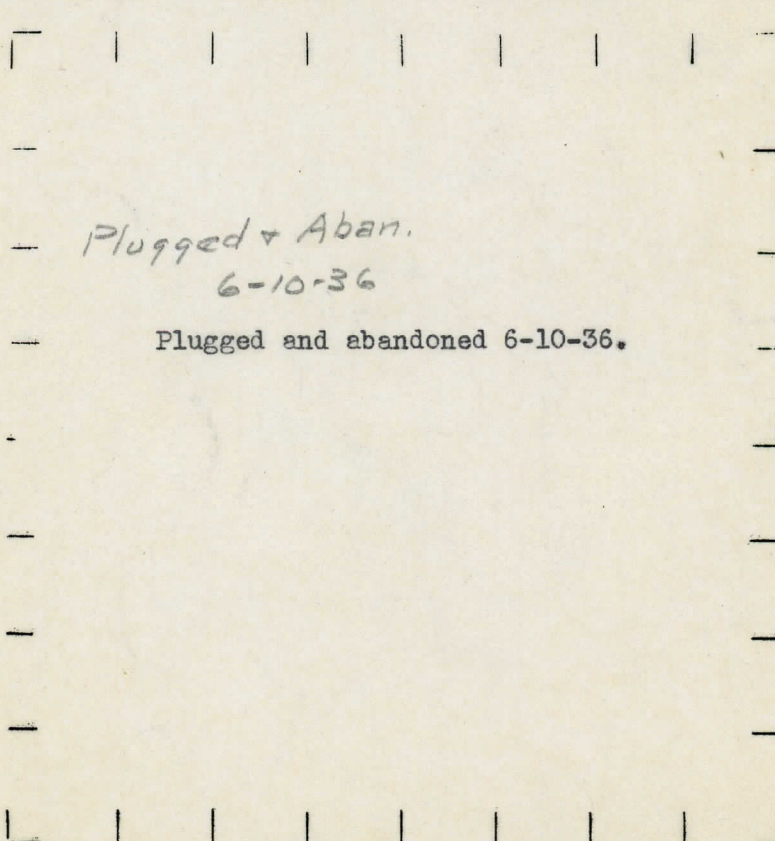
⊙ DRY SHOWING GAS

⊙ ABANDONED LOCATION

☼ ABANDONED GAS WELL

◆ ABANDONED OIL WELL

NOTE: Below make tracing from map, (when no map is obtainable make sketch) showing farm, center of section, this location with measurements and also wells, dry holes, or other locations in the vicinity of this location.



REMARKS:

SIGNED

Superintendent or Foreman.



DATE February 23, 1934 LOCATION REPORT No. 588

STATE Michigan COUNTY Midland DIST. Porter SEC. 20 TOWN 13 N RANGE 1 W

WELL No. 1 (SERIAL No. 588) FARM Eliza Breu ACRES \_\_\_\_\_

NAME OF STREAM OR WATERS \_\_\_\_\_ QUADRANGLE NW-NW-SE

OPERATOR McClanahan Oil Co. MAP Porter Township, Midland County

330 Feet from North Line of Farm

“ “ East “ “ “

“ “ South “ “ “

330 “ “ West “ “ “

Feet from North Line of Section

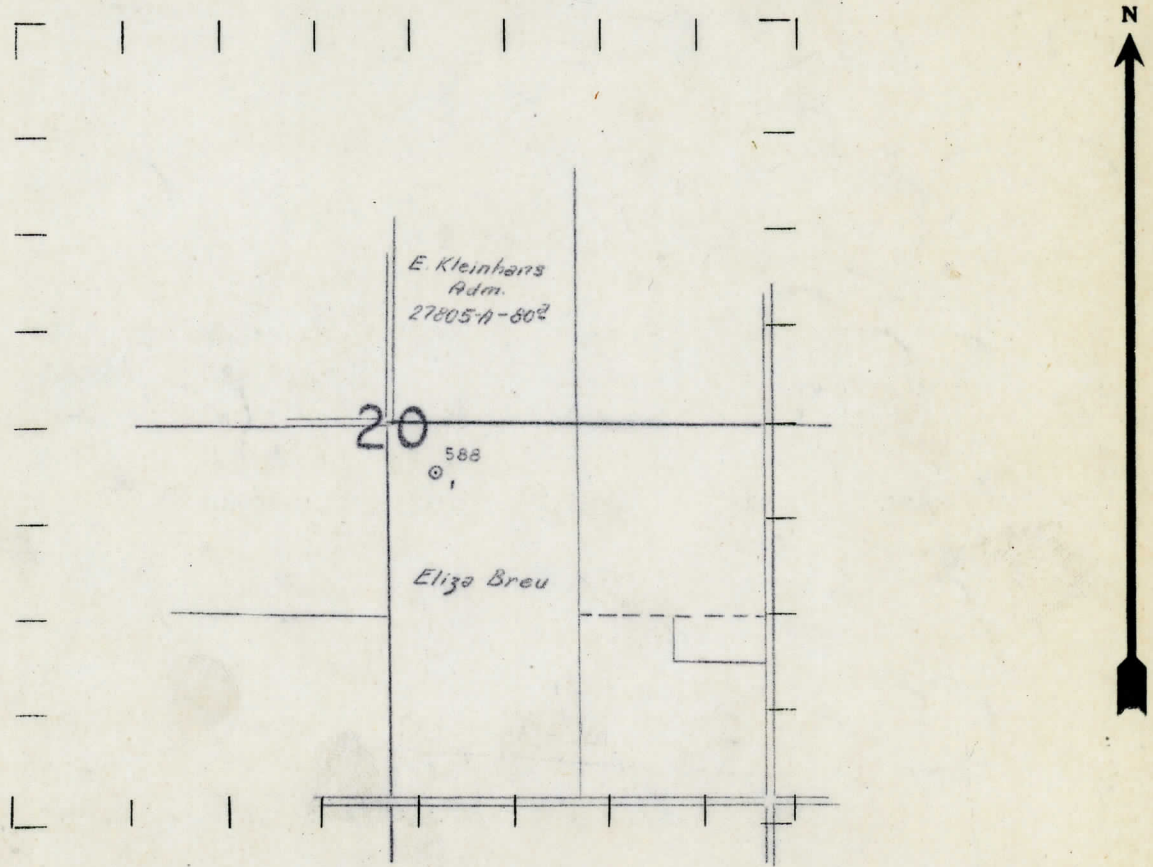
2310 “ “ East “ “ “

2310 “ “ South “ “ “

“ “ West “ “ “

- LEGEND**
- |                  |                      |
|------------------|----------------------|
| ○ LOCATION       | ⬢ DRY HOLE           |
| ① RIG            | ⬢ DRY SHOWING OIL    |
| ⊕ DRILLING       | ⬢ DRY SHOWING GAS    |
| ⊗ GAS WELL       | ⬢ ABANDONED LOCATION |
| ● OIL WELL       | ⊗ ABANDONED GAS WELL |
| ⬢ SMALL OIL WELL | ⬢ ABANDONED OIL WELL |

NOTE: Below make tracing from map, (when no map is obtainable make sketch) showing farm, center of section, this location with measurements and also wells, dry holes, or other locations in the vicinity of this location. Make copy to keep for reference and send original to Columbus office.



REMARKS: \_\_\_\_\_

SIGNED R. L. Yeager  
Superintendent or Foreman.



THE PURE OIL COMPANY

DATE 6/28/34 Michigan Producing DIVISION **COMPLETION RECORD** No. 588

STATE Michigan COUNTY Midland DIST. Porter TWP. Porter SEC. 20 TOWN 13N RANGE 1W

WELL No. 1 (SERIAL No. 588) FARM Eliza Brou ACRES

NAME OF STREAM OR WATERS QUADRANGLE NW NW SE

OPERATOR McClanahan Oil Company MAP Porter Township, Midland County

LOCATION REPORT SENT IN (DATE) 2/23/34

WELL STARTED (DATE) 2/23/34 WELL COMPLETED (DATE) 6/4/34

☐ OIL WELL ☒ GAS WELL ☐ DRY HOLE ☐ ABANDONED WELL

Elevation 689.3

CROSS OUT THREE OF THE ABOVE  
WELL RECORD

DATE OF Acid 6/13/34 NUMBER OF gallons 1000

1st 24 HOURS PRODUCTION 249 bbls., natural BARRELS OR FEET

1st " " 637 " after acid " " "

3rd " " " " " "

4th " " " " " "

5th " " " " " "

SAND AND CASING

CASING SIZE	WEIGHT	CASING Feet Inches	SAND Name and Nature	TOP	BOTTOM	TOP PAY	BOTTOM PAY	SALT WATER
10"		283	Marshall	995				
8 1/4"		825	Red Rock		1295			
6-5/8		1298	Berea	2325	2385			
5-3/16		3405	Traverse	2820				
			Dundee	3404	S.L.M.	3427	3429	
						3440	3440 1/2	
			Total Depth		3440 1/2			3440 1/2

REMARKS Turned out 35% B.S. and Salt Water on test after acid.