



Western Michigan University  
ScholarWorks at WMU

---

Legacy Scout Tickets from Pure Oil Company

---

8-20-2021

MGRRE\_PureOilScoutTickets\_Campbell, J.  
W.\_4\_21111019090000

MGRRE  
*Western Michigan University*

Follow this and additional works at: <https://scholarworks.wmich.edu/pure>



Part of the Geology Commons

---

#### WMU ScholarWorks Citation

MGRRE, "MGRRE\_PureOilScoutTickets\_Campbell, J. W.\_4\_21111019090000" (2021). *Legacy Scout Tickets from Pure Oil Company*. 5510.  
<https://scholarworks.wmich.edu/pure/5510>

This Document is brought to you for free and open access via ScholarWorks at WMU. It has been accepted for inclusion in Legacy Scout Tickets from Pure Oil Company by an authorized administrator of ScholarWorks at WMU. See the National Digital Catalogue - Science Base Catalogue for more collections submitted by MGRRE.



---

**MGRRE\_PureOilScoutTickets\_Campbell, J. W.\_4\_21111019090000**

API 21111019090000

Permit Number 1909

Lease Name Campbell, J. W.

Well Number 4

County Midland

Township 13N

Range 01W

Section 18

2021 DEQ or Pure co\_name Summit Petroleum Corporation

Pure Number 590

Latitude 43.51423

Longitude -84.47285

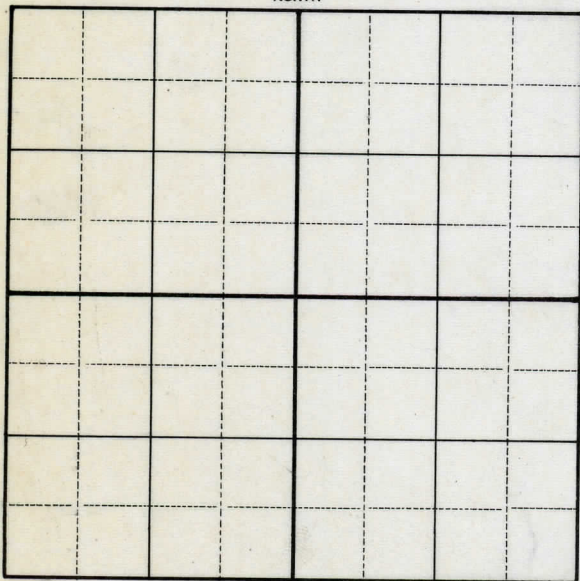
## WELL REPORT - OUTSIDE OPERATIONS

SERIAL NO. 590STATE Michigan ~~MS~~ Midland  
CO.OPERATOR Evaluation & Sales ServiceFARM J.W. Campbell WELL NO. 4TWP. Porter S. 18 T. 13N R. 1W  
~~SURV~~LOC. SW NE SEWILDCAT ☐ FIELD ☐ FIELD NAME \_\_\_\_\_

MAP NO. \_\_\_\_\_ CO-ORD. \_\_\_\_\_ ELEV. \_\_\_\_\_

STATUS Abandoned April 8, 1953 - To be used forBDW - Total Depth - 3420'

NORTH

DATE 6-2-53 SCOUT JEC

THE PURE OIL COMPANY

LOCATION REPORT

Date March 21, 1945 Corrected A.F.E. No. \_\_\_\_\_

Division Mich. Producing District \_\_\_\_\_ Lease J. W. Campbell

Acres \_\_\_\_\_ Lease No. \_\_\_\_\_ Elevation \_\_\_\_\_ Well No. 4 (Serial No. 590)

Quadrangle SW NE SE Sec. 18 Twp. 13 N Rge. 1 W ~~XEROX~~ ~~XEROX~~ Twp. Porter

Survey \_\_\_\_\_ County Midland State Michigan

Operator Evaluation & Sales Service Map Porter Township, Midland County

\_\_\_\_ Feet from North Line of Lease  
 " " East " " "  
 " " South " " "  
 " " West " " "  
 \_\_\_\_ Feet from North Line of Section  
 " " East " " "  
 " " South " " "  
 " " West " " "

LEGEND

○ Location



Gas Well



Oil Well



Gas - Distillate Well



Dry Hole



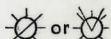
Dry Showing Oil



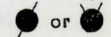
Dry Showing Gas



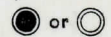
Abandoned Location



Abandoned Gas Well

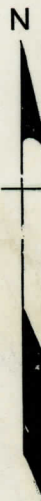


Abandoned Oil Well



Input Well

See plat - Midland #590.



Remarks: Change of operator. Scale \_\_\_\_\_

Submitted by Scouting Dept. Approved by \_\_\_\_\_ Division Manager

Approved by \_\_\_\_\_ Vice-President - General Manager



DATE February 23, 1934

## LOCATION REPORT

No. 590STATE Michigan COUNTY Midland DIST. Porter SEC. 18 TOWN 13 N. RANGE 1 W.WELL No. 4 (SERIAL No. 590) FARM J. W. Campbell ACRESNAME OF STREAM OR WATERS QUADRANGLE SW-NE-SEOPERATOR Strange & Fortney MAP Porter Township, Midland County

Feet from North Line of Farm

990 " " East " " "260 " " South " " "

" " West " " "

Feet from North Line of Section

990 " " East " " "

" " South " " "

1060 East & West "  $\frac{1}{4}$  Sec. lines

## LEGEND

O LOCATION

① RIG

⊗ DRILLING

⊗ GAS WELL

● OIL WELL

⊙ SMALL OIL WELL

⊕ DRY HOLE

⊕ DRY SHOWING OIL

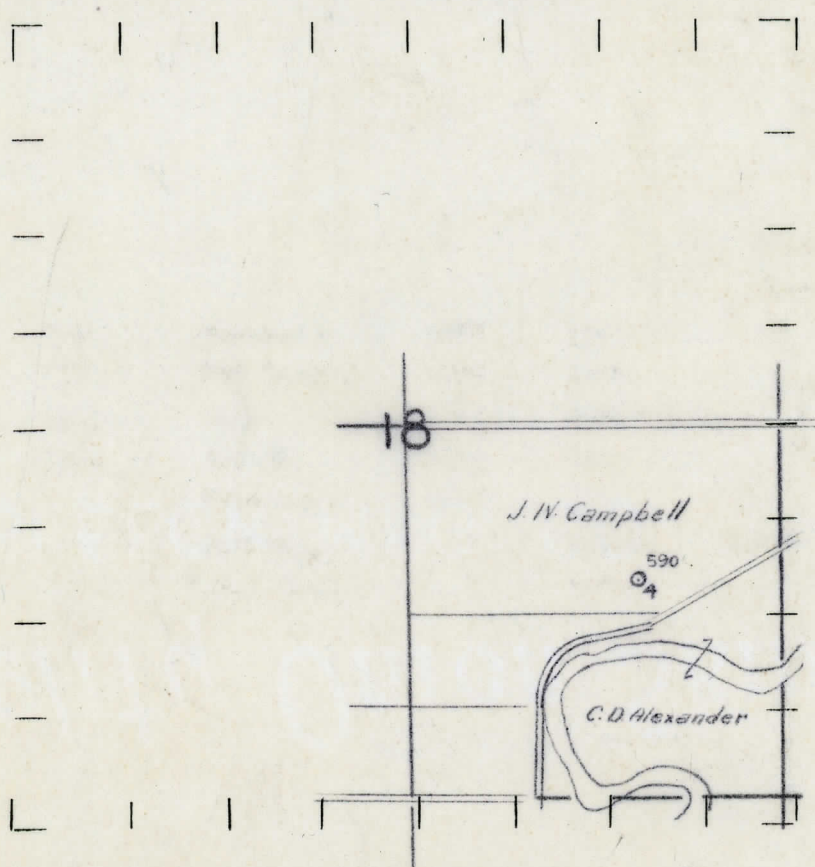
⊕ DRY SHOWING GAS

⊕ ABANDONED LOCATION

⊕ ABANDONED GAS WELL

⊕ ABANDONED OIL WELL

NOTE: Below make tracing from map, (when no map is obtainable make sketch) showing farm, center of section, this location with measurements and also wells, dry holes, or other locations in the vicinity of this location. Make copy to keep for reference and send original to Columbus office.



REMARKS:

SIGNED

*R. L. Yeager*  
Superintendent or Foreman.



THE PURE OIL COMPANY

CROSS OUT THREE OF THE ABOVE  
WELL RECORD

DATE OF SHOT				NUMBER OF QUARTS							
1st 24 HOURS PRODUCTION				1742 hbls. Potential (Natural)				BARRELS OR FEET			
2nd	"	"	"					"	"	"	
3rd	"	"	"					"	"	"	
4th	"	"	"					"	"	"	
5th	"	"	"					"	"	"	

## SAND AND CASING

[illegible]

REMARKS.

SIGNED

G. H. Bell

**SUPT. OR FOREMAN**