



Western Michigan University  
ScholarWorks at WMU

---

Legacy Scout Tickets from Pure Oil Company

---

8-20-2021

**MGRRE\_PureOilScoutTickets\_Breu, W. C.\_2\_21111019180000**

MGRRE

*Western Michigan University*

Follow this and additional works at: <https://scholarworks.wmich.edu/pure>



Part of the Geology Commons

---

#### **WMU ScholarWorks Citation**

MGRRE, "MGRRE\_PureOilScoutTickets\_Breu, W. C.\_2\_21111019180000" (2021). *Legacy Scout Tickets from Pure Oil Company*. 5512.

<https://scholarworks.wmich.edu/pure/5512>

This Document is brought to you for free and open access via ScholarWorks at WMU. It has been accepted for inclusion in Legacy Scout Tickets from Pure Oil Company by an authorized administrator of ScholarWorks at WMU. See the National Digital Catalogue - Science Base Catalogue for more collections submitted by MGRRE.



---

**MGRRE\_PureOilScoutTickets\_Breu, W. C.\_2\_21111019180000**

API 21111019180000

Permit Number 1918

Lease Name Breu, W. C.

Well Number 2

County Midland

Township 13N

Range 01W

Section 20

2021 DEQ or Pure co\_name Stork, Fred W.

Pure Number 592

Latitude 43.49984

Longitude -84.45068

THE PURE OIL COMPANY

DATE August 3, 1937

## LOCATION REPORT

No. 592

STATE Michigan COUNTY Midland DIST. Porter SEC. 20 TOWN 13 N RANGE 1 W

WELL No. 22 (SERIAL No. 592) FARM W. C. Breu PREC. W. C. Breu ACRES

NAME OF STREAM OR WATERS \_\_\_\_\_ QUADRANGLE SE NE SE

OPERATOR Stork Oil Company Map Porter Township, Midland County

Feet from North Line of Farm

“ “ East “ “ “

“ “ South “ “ “

“ “ West “ “ “

Feet from North Line of Section 7/4

“ “ East “ “ “

“ “ South “ “ “

“ “ West “ “ “

### LEGEND

O LOCATION

① RIG


## ⊕ DRILLING

 **GAS WELL**

● OIL WELL

 SMALL OIL WELL

⊙ DRY HOLE

 DRY SHOWING OIL

☀ DRY SHOWING GAS

⓪ ABANDONED LOCATION

 **ABANDONED GAS WELL**

 ABANDONED OIL WELL

NOTE: Below make tracing from map, (when no map is obtainable make sketch) showing farm, center of section, this location with measurements and also wells, dry holes, or other locations in the vicinity of this location.

Plugged & Aban.

4-10-37

Plugged and abandoned 4-10-37

REMARKS:

SIGNED

Superintendent or Foreman.



DATE March 1, 1934

LOCATION REPORT

No. 592

STATE Michigan COUNTY Midland DIST. Porter SEC. 20 TOWN 13 N RANGE 1 W

WELL No. 2 (SERIAL No. 592) FARM W. C. Breu ACRES

NAME OF STREAM OR WATERS QUADRANGLE SE-NE-SE

OPERATOR Fred W. Stark MAP Porter Township, Midland County

Feet from North Line of Farm

330 " " East " " "

330 " " South " " "

" " West " " "

Feet from North Line of Section

330 " " East " " "

1650 " " South " " "

" " West " " "

LEGEND

○ LOCATION

① RIG

⊕ DRILLING

⊗ GAS WELL

● OIL WELL

⬮ SMALL OIL WELL

⬮ DRY HOLE

⬮ DRY SHOWING OIL

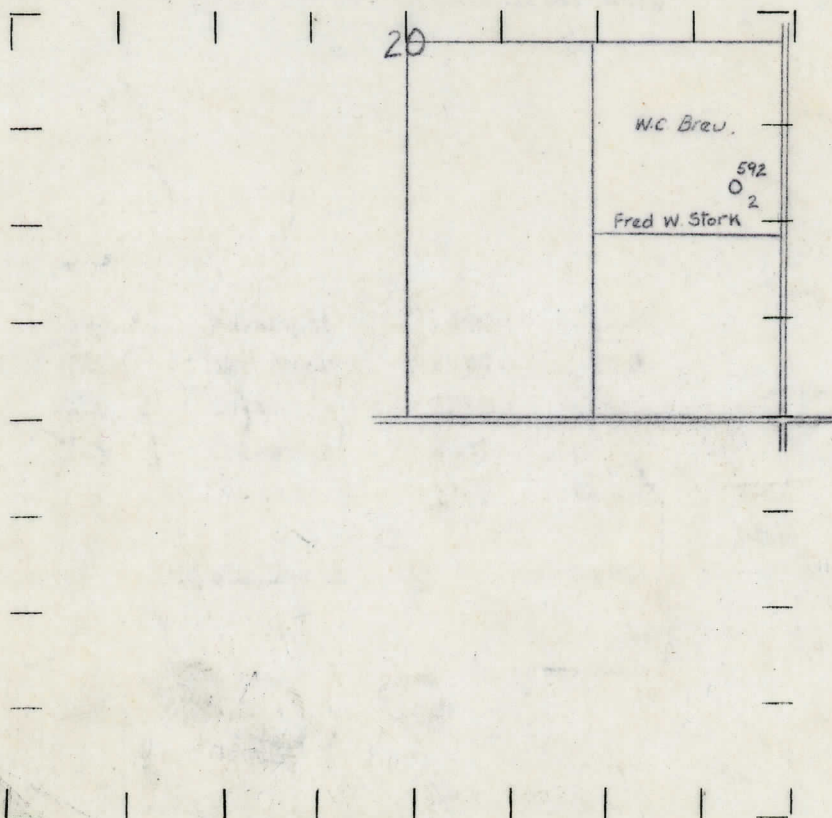
⬮ DRY SHOWING GAS

⬮ ABANDONED LOCATION

⬮ ABANDONED GAS WELL

⬮ ABANDONED OIL WELL

NOTE: Below make tracing from map, (when no map is obtainable make sketch) showing farm, center of section, this location with measurements and also wells, dry holes, or other locations in the vicinity of this location. Make copy to keep for reference and send original to Columbus office.



REMARKS:

SIGNED

*R. L. Yager*  
Superintendent or Foreman.

Per. # 1918



THE PURE OIL COMPANY

Michigan Producing DIVISION  
**COMPLETION RECORD**

No. 592

STATE Michigan COUNTY Midland DIST. Porter TWP. Porter SEC. 20 TOWN 13 N RANGE 1W

WELL No. 2 (SERIAL No. 592) FARM W. C. Breu ACRES

NAME OF STREAM OR WATERS \_\_\_\_\_ QUADRANGLE **SE-NE-SE**

OPERATOR Fred W. Stork MAP Porter Township, Midland County

LOCATION REPORT SENT IN (DATE) 3/1/34

WELL STARTED (DATE) 3/18/34 WELL COMPLETED (DATE) 5/12/34

## OIL WELL

**CASTLEVIEW**

DRYMOCHLOE

## TAIYANFONGDOWEN

Elevation 690.2'

CROSS OUT THREE OF THE ABOVE  
WELL RECORD

DATE OF **Acid** **SHOT** 6/4/34 NUMBER OF **Gallons** **QUARTS** 1000

1st 24 HOURS PRODUCTION				Est. 125 bbls., natural	BARRELS OR FEET		
1st	"	"	"	4758	"	potential, after acid	" " "
2nd	"	"	"				" " "
3rd	"	"	"				" " "
4th	"	"	"				" " "
5th	"	"	"				" " "

## SAND AND CASING

[illegible]

REMARKS.

NOTE:—MAKE COPY TO KEEP FOR REFERENCE AND SEND ORIGINAL TO CHICAGO OFFICE. LIST MATERIAL CHARGEABLE TO WELL ON OTHER SIDE.

SIGNED

W. Bell

**SUPT. OR FOREMAN**