



Western Michigan University
ScholarWorks at WMU

Legacy Scout Tickets from Pure Oil Company

8-20-2021

**MGRRE_PureOilScoutTickets_Carter, Wm. M., &
Sophia_3_21111019980000**

MGRRE
Western Michigan University

Follow this and additional works at: <https://scholarworks.wmich.edu/pure>



Part of the Geology Commons

WMU ScholarWorks Citation

MGRRE, "MGRRE_PureOilScoutTickets_Carter, Wm. M., & Sophia_3_21111019980000" (2021). *Legacy Scout Tickets from Pure Oil Company*. 5538.
<https://scholarworks.wmich.edu/pure/5538>

This Document is brought to you for free and open access via ScholarWorks at WMU. It has been accepted for inclusion in Legacy Scout Tickets from Pure Oil Company by an authorized administrator of ScholarWorks at WMU. See the National Digital Catalogue - Science Base Catalogue for more collections submitted by MGRRE.



MGRRE_PureOilScoutTickets_Carter, Wm. M., & Sophia_3_21111019980000

API 21111019980000

Permit Number 1998

Lease Name Carter, Wm. M., & Sophia

Well Number 3

County Midland

Township 13N

Range 01W

Section 18

2021 DEQ or Pure co_name Carter Lease, Incorporated

Pure Number 637

Latitude 43.51255

Longitude -84.47547

DATE August 31, 1940

LOCATION REPORT

No. 637

STATE Michigan COUNTY Midland TWP. Porter SEC. 18 TOWN 13 N RANGE 1 W
 WELL No. 3 (SERIAL No. 637) FARM Wm. M. Carter ACRES
 NAME OF STREAM OR WATERS QUADRANGLE NE SW SE
 OPERATOR Carter Lease, Inc. Map Porter Township, Midland County

Feet from North Line of Farm

" " East " " "

" " South " " "

" " West " " "

Feet from North Line of Section

" " East " " "

" " South " " "

" " West " " "

LEGEND

○ LOCATION

① RIG

⊕ DRILLING

☼ GAS WELL

● OIL WELL

◆ SMALL OIL WELL

⊙ DRY HOLE

◆ DRY SHOWING OIL

⊙ DRY SHOWING GAS

⊙ ABANDONED LOCATION

☼ ABANDONED GAS WELL

◆ ABANDONED OIL WELL

NOTE: Below make tracing from map, (when no map is obtainable make sketch) showing farm, center of section, this location with measurements and also wells, dry holes, or other locations in the vicinity of this location.

Plugged and abandoned 1-30-40.

REMARKS:

SIGNED

Subintendent or Foreman.

WELL No. 3 (SERIAL No. 637) FARM Wm. M. Carter ACRES

NAME OF STREAM OR WATERS QUADRANGLE NE-SW-SE

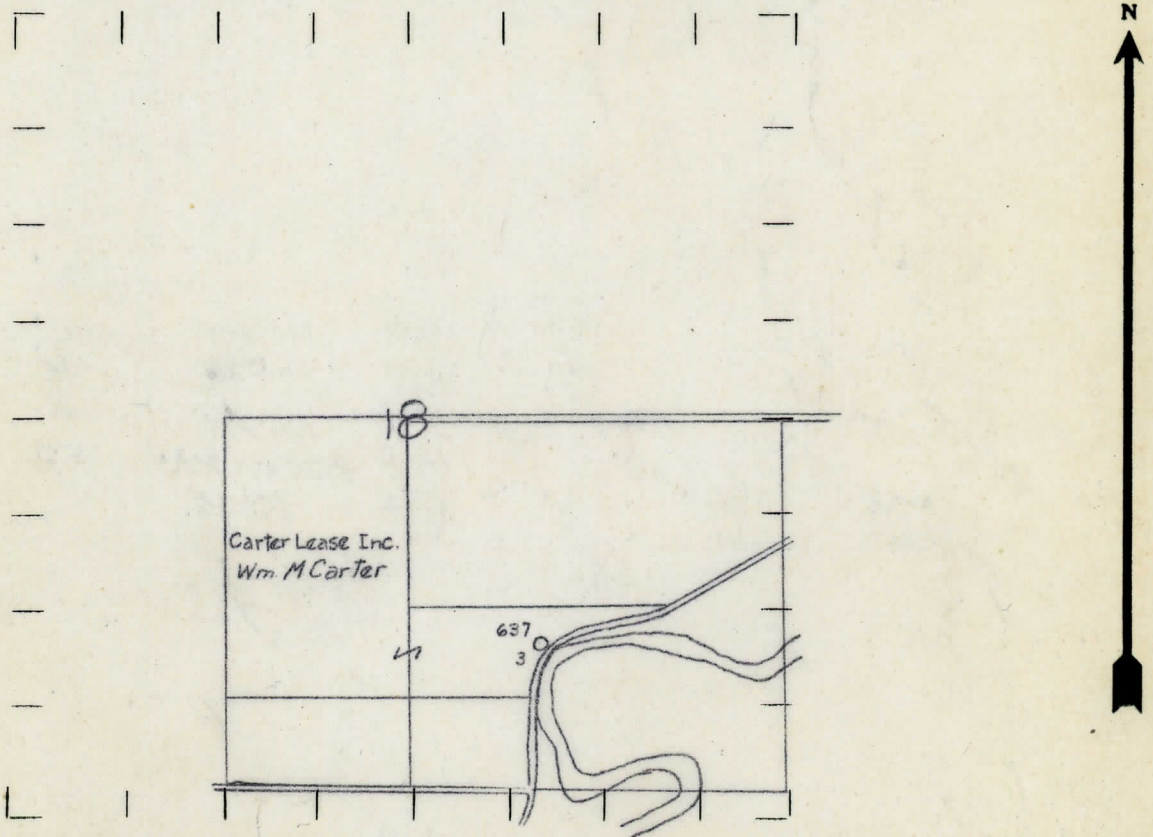
OPERATOR Carter Lease, Incorporated MAP Porter Township, Midland County

340 Feet from North Line of Farm
 362 " " East " " "
 " " South " " "
 " " West " " "
 Feet from North Line of Section
 " " East " " "
 975 " " South " " "
 958 " " West " " $\frac{1}{4}$ "

1-30-40

- LEGEND**
- LOCATION
 - ① RIG
 - ⊗ DRILLING
 - ⊙ GAS WELL
 - OIL WELL
 - ⬮ SMALL OIL WELL
 - ⬮ DRY HOLE
 - ⬮ DRY SHOWING OIL
 - ⬮ DRY SHOWING GAS
 - ⬮ ABANDONED LOCATION
 - ⬮ ABANDONED GAS WELL
 - ⬮ ABANDONED OIL WELL

NOTE: Below make tracing from map, (when no map is obtainable make sketch) showing farm, center of section, this location with measurements and also wells, dry holes, or other locations in the vicinity of this location. Make copy to keep for reference and send original to Columbus office.



REMARKS:

SIGNED *A. L. Yeager, Jr.*
 Superintendent or Foreman.
 Per-1998

COMPLETION RECORD

STATE Michigan COUNTY Midland DIST. Porter SEC. 18 TOWN 13N RANGE 1W
 WELL No. 3 (SERIAL No. 637) FARM Wm. M. Carter ACRES _____

NAME OF STREAM OR WATERS _____ QUADRANGLE NE-SW-SE

OPERATOR Carter Lease, Incorporated MAP Porter Township, Midland County

LOCATION REPORT SENT IN (DATE) 5/3/34

WELL STARTED (DATE) 5/7/34 WELL COMPLETED (DATE) 6/26/34

☐ OIL WELL

☒ GAS WELL

☐ DRY HOLE

☐ ABANDONED WELL

Elevation 686.2'

CROSS OUT THREE OF THE ABOVE
WELL RECORD

DATE OF SHOT _____ NUMBER OF QUARTS _____

1st 24 HOURS PRODUCTION 550 bbls., Potential, natural BARRELS OR FEET

2nd " " " " " "

3rd " " " " " "

4th " " " " " "

5th " " " " " "

SAND AND CASING

CASING SIZE	WEIGHT	CASING Feet Inches	SAND Name and Nature	TOP	BOTTOM	TOP PAY	BOTTOM PAY	SALT WATER
10"		249	Marshall	1035	1205			
8 1/4"		791	Red Rock	1205	1280			
6-5/8"		1290	Sunbury	2300				
5-3/16"		3378	Traverse Lime	2790				
			Dundee	3375		3390	3394	
						3400	3406	
			Total Depth		3413			

REMARKS _____

