



Western Michigan University  
ScholarWorks at WMU

---

Legacy Scout Tickets from Pure Oil Company

---

8-20-2021

**MGRRE\_PureOilScoutTickets\_Breu, W. C.\_3\_21111020290000**

MGRRE

*Western Michigan University*

Follow this and additional works at: <https://scholarworks.wmich.edu/pure>



Part of the Geology Commons

---

#### WMU ScholarWorks Citation

MGRRE, "MGRRE\_PureOilScoutTickets\_Breu, W. C.\_3\_21111020290000" (2021). *Legacy Scout Tickets from Pure Oil Company*. 5544.

<https://scholarworks.wmich.edu/pure/5544>

This Document is brought to you for free and open access via ScholarWorks at WMU. It has been accepted for inclusion in Legacy Scout Tickets from Pure Oil Company by an authorized administrator of ScholarWorks at WMU. See the National Digital Catalogue - Science Base Catalogue for more collections submitted by MGRRE.



---

**MGRRE\_PureOilScoutTickets\_Breu, W. C.\_3\_21111020290000**

API 21111020290000

Permit Number 2029

Lease Name Breu, W. C.

Well Number 3

County Midland

Township 13N

Range 01W

Section 20

2021 DEQ or Pure co\_name Stork, Fred W.

Pure Number 654

Latitude 43.50167

Longitude -84.45316

## THE PURE OIL COMPANY

DATE February 15, 1936

## LOCATION REPORT

No. 654STATE MichiganCOUNTY MidlandMidlandDIST. PorterTWP. PorterSEC. 20TOWN 13 N.RANGE 1 W.WELL No. 3(SERIAL No. 654)

FARM

ACRES

NAME OF STREAM OR WATERS

QUADRANGLE NW NE SEOPERATOR Stork Oil CompanyMap Porter Township, Midland CountyPorter Twp - Midland Co.

Feet from North Line of Farm

" " East " " "

" " South " " "

" " West " " "

Feet from North Line of Section

" " East " " "

" " South " " "

" " West " " "

## LEGEND

○ LOCATION

① RIG

⊕ DRILLING

☼ GAS WELL

● OIL WELL

● SMALL OIL WELL

☼ DRY HOLE

● DRY SHOWING OIL

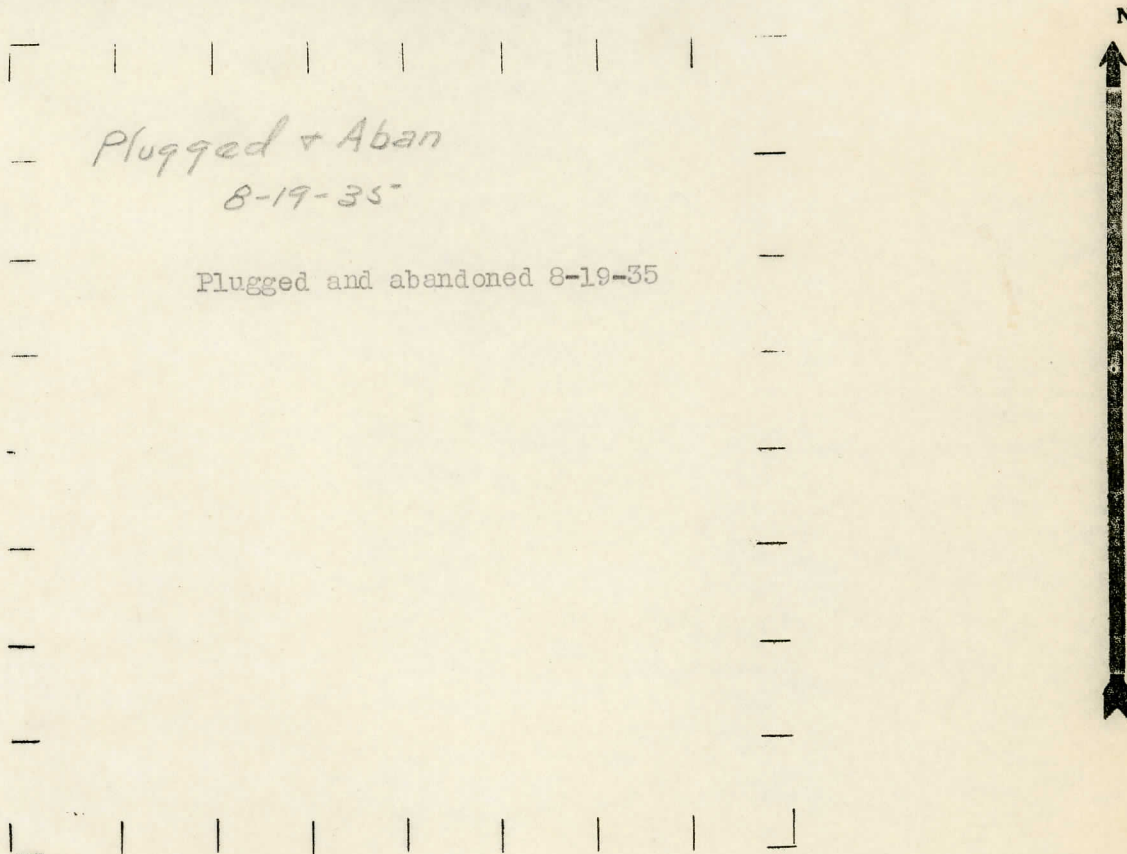
☼ DRY SHOWING GAS

☼ ABANDONED LOCATION

☼ ABANDONED GAS WELL

● ABANDONED OIL WELL

NOTE: Below make tracing from map, (when no map is obtainable make sketch) showing farm, center of section, this location with measurements and also wells, dry holes, or other locations in the vicinity of this location.



REMARKS:

SIGNED

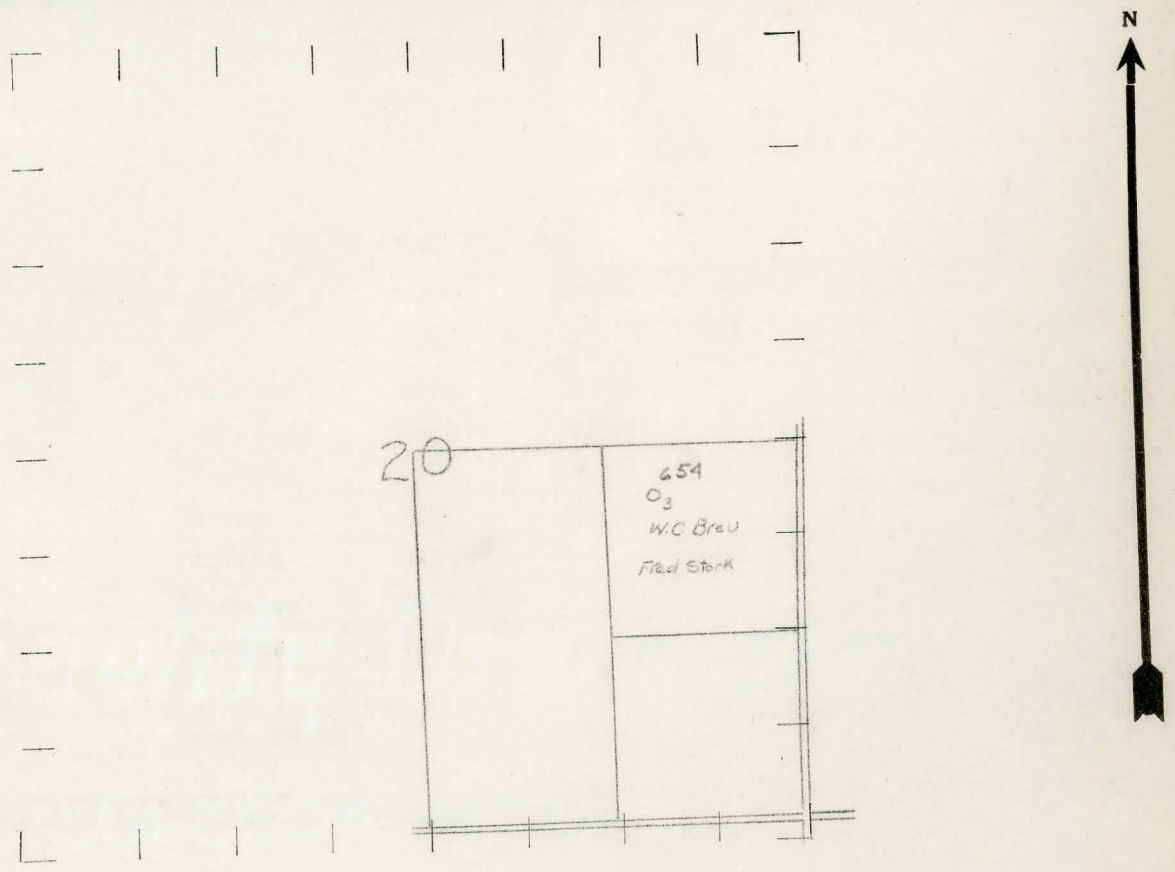
Superintendent or Foreman.

DATE May 24, 1934 LOCATION REPORT NO. 40  
 STATE Michigan COUNTY Midland DIST. Porter SEC. 20 TOWN 13 N RANGE 1 W  
 WELL No. 3 (SERIAL No. 654) FARM W. C. Brew ACRES \_\_\_\_\_  
 NAME OF STREAM OR WATERS \_\_\_\_\_ QUADRANGLE NW-NE-SE  
 OPERATOR Fred W. Stork MAP Porter Township, Midland County

330 Feet from North Line of Farm  
 " " East " " "  
 " " South " " "  
330 " " West " " "  
 Feet from North Line of Section  
990 " " East " " "  
2310 " " South " " "  
 " " West " " "

- LEGEND**
- |                  |                      |
|------------------|----------------------|
| ○ LOCATION       | ⬮ DRY HOLE           |
| ① RIG            | ⬮ DRY SHOWING OIL    |
| ⊕ DRILLING       | ⬮ DRY SHOWING GAS    |
| ⊙ GAS WELL       | ⬮ ABANDONED LOCATION |
| ● OIL WELL       | ⬮ ABANDONED GAS WELL |
| ⬮ SMALL OIL WELL | ⬮ ABANDONED OIL WELL |

NOTE: Below make tracing from map, (when no map is obtainable make sketch) showing farm, center of section, this location with measurements and also wells, dry holes, or other locations in the vicinity of this location. Make copy to keep for reference and send original to Columbus office.



REMARKS: \_\_\_\_\_  
 \_\_\_\_\_  
 \_\_\_\_\_  
 SIGNED R. L. Wagner  
 Superintendent or Foreman.  
 Pu-2029



Michigan Producing

DIVISION

DATE 9/14/34

# COMPLETION RECORD

No. 654

STATE Michigan COUNTY Midland DIST. TWP. Porter SEC. 20 TOWN 13N RANGE 1W

WELL No. 3 (SERIAL No. 654) FARM W. C. Breu ACRES

NAME OF STREAM OR WATERS QUADRANGLE NW-NE-SE

OPERATOR Fred W. Stork MAP Porter Township, Midland County

LOCATION REPORT SENT IN (DATE) 5/24/34

WELL STARTED (DATE) 6/11/34 WELL COMPLETED (DATE) 8/3/34

OIL WELL

GAS WELL

DRY HOLE

ABANDONED WELL

Elevation 691.4'

CROSS OUT THREE OF THE ABOVE

## WELL RECORD

DATE OF SHOT NUMBER OF QUARTS

1st 24 HOURS PRODUCTION 488 bbls., Potential, natural BARRELS OR FEET

2nd " " " " " "

3rd " " " " " "

4th " " " " " "

5th " " " " " "

## SAND AND CASING

CASING SIZE	WEIGHT	CASING Feet Inches	SAND Name & Nature	TOP	BOTTOM	TOP PAY	BOTTOM PAY	SALT WATER
10"		275	Stray	1040				
8 1/4"		802	Marshall	1070	1165			
6-5/8"		1277	Red Rock	1165	1267			
5-3/16		3383	Sunbury	2285	2292			
			Berea	2292	2330			
			Antrim	2435				
			Traverse	2845??				
			Dundee	3383	S.L.M.	3395	Show	
						3427	3431	3431
			Total Depth		3431			

REMARKS Showed 45% Salt Water on Potential test!

*G. H. Bell*