



Western Michigan University
ScholarWorks at WMU

Legacy Scout Tickets from Pure Oil Company

8-20-2021

**MGRRE_PureOilScoutTickets_Breu, Norman &
Cecile_4_21111020780000**

MGRRE
Western Michigan University

Follow this and additional works at: <https://scholarworks.wmich.edu/pure>



Part of the Geology Commons

WMU ScholarWorks Citation

MGRRE, "MGRRE_PureOilScoutTickets_Breu, Norman & Cecile_4_21111020780000" (2021). *Legacy Scout Tickets from Pure Oil Company*. 5557.
<https://scholarworks.wmich.edu/pure/5557>

This Document is brought to you for free and open access via ScholarWorks at WMU. It has been accepted for inclusion in Legacy Scout Tickets from Pure Oil Company by an authorized administrator of ScholarWorks at WMU. See the National Digital Catalogue - Science Base Catalogue for more collections submitted by MGRRE.



MGRRE_PureOilScoutTickets_Breu, Norman & Cecile_4_21111020780000

API 21111020780000

Permit Number 2078

Lease Name Breu, Norman & Cecile

Well Number 4

County Midland

Township 13N

Range 01W

Section 20

2021 DEQ or Pure co_name McClanahan Oil Company

Pure Number 676

Latitude 43.50348

Longitude -84.45314

THE PURE OIL COMPANY

DATE October 6, 1936

LOCATION REPORT

No. 676STATE Michigan

COUNTY

Midland

DIST.

Porter

TWP.

Porter

SEC.

20

TOWN

13 N.

RANGE

1 W.WELL No. 44(SERIAL No. 676)

FARM

PREC.

Norman Breu

ACRES

NAME OF STREAM OR WATERS

QUADRANGLE

SW-SE-NE

OPERATOR

McClanahan Oil Company

Map

Porter Township, Midland CountyMcClanahan Oil Co.Porter - Mid Co.

Feet from North Line of Farm

" " East " " "

" " South " " "

" " West " " "

Feet from North Line of Section

990 990

" " East " " "

330 330" " South " 1/4

" " West " " "

LEGEND

○ LOCATION

① RIG

⊕ DRILLING

☀ GAS WELL

● OIL WELL

● SMALL OIL WELL

⊙ DRY HOLE

◆ DRY SHOWING OIL

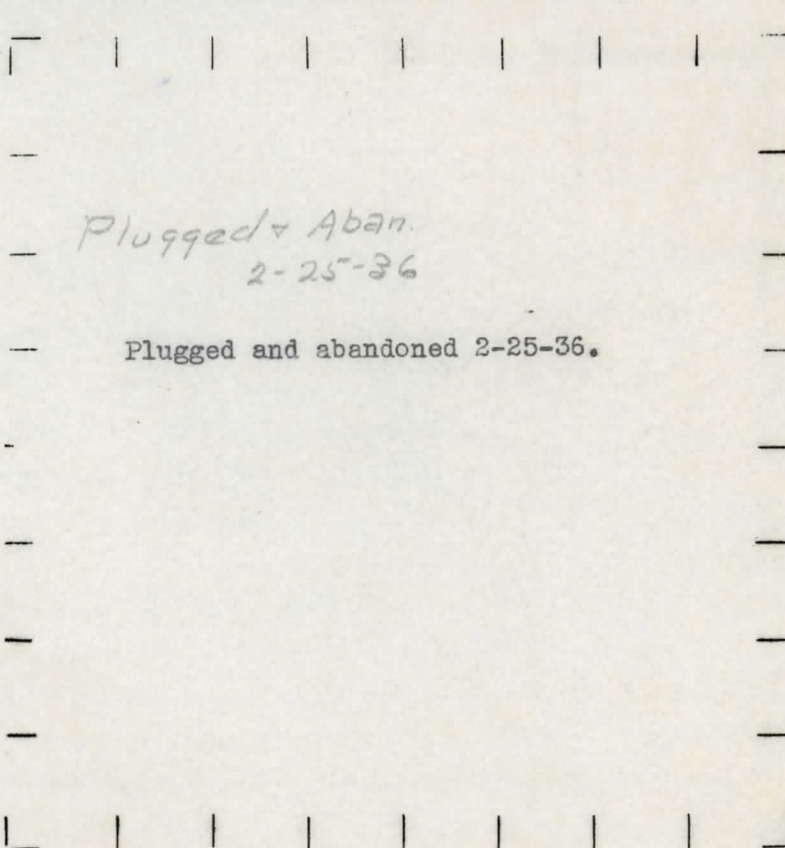
☀ DRY SHOWING GAS

⊙ ABANDONED LOCATION

☀ ABANDONED GAS WELL

● ABANDONED OIL WELL

NOTE: Below make tracing from map, (when no map is obtainable make sketch) showing farm, center of section, this location with measurements and also wells, dry holes, or other locations in the vicinity of this location.



REMARKS:

SIGNED

Superintendent or Foreman.

DYLE 0010061 e' 1020

LOCATION REPORT

No. 676

DATE 7-5-34

THE PORE OIL COMPANY
LOCATION REPORT

No. 676

STATE Michigan COUNTY Midland DIST. TWP. Porter SEC. 20 TOWN 13N RANGE 1 W
WELL No. 4 (SERIAL No. 676) FARM Norman & Cecile Breu ACRES

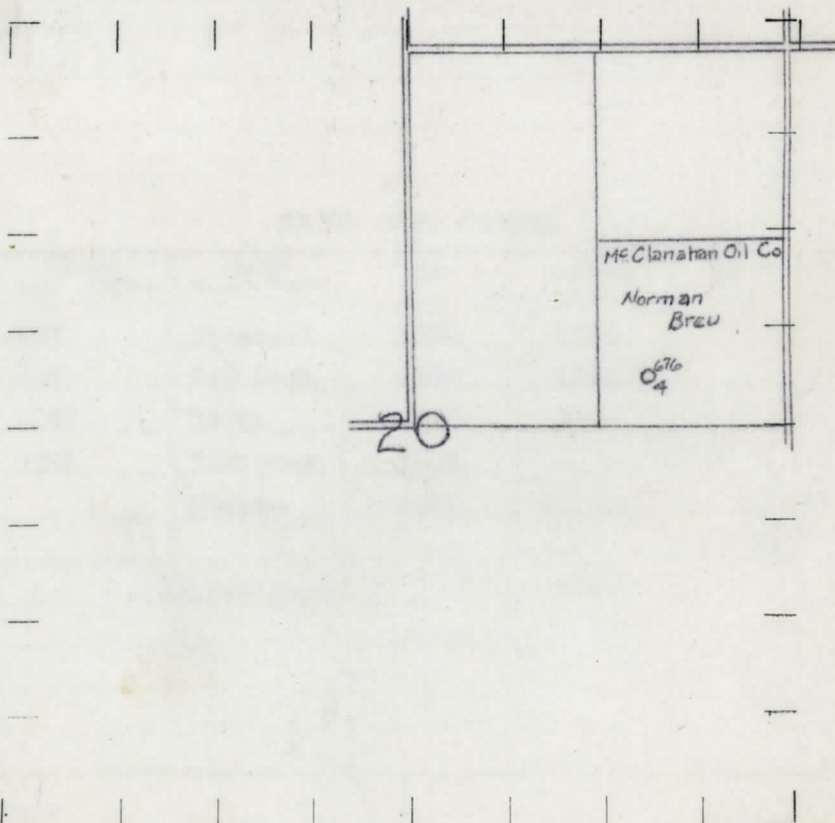
NAME OF STREAM OR WATERS QUADRANGLE SW-SE-NE
OPERATOR McClanahan Oil Company MAP Porter Township, Midland County

Feet from North Line of Farm
" " East " " "
330 " " South " " "
330 " " West " " "
2310 Feet from North Line of Section
990 " " East " " "
" " South " " "
" " West " " "

LEGEND

- | | |
|------------------|----------------------|
| ○ LOCATION | ✦ DRY HOLE |
| ① RIG | ✦ DRY SHOWING OIL |
| ⊕ DRILLING | ✦ DRY SHOWING GAS |
| ⊗ GAS WELL | ⊗ ABANDONED LOCATION |
| ● OIL WELL | ⊗ ABANDONED GAS WELL |
| ⬤ SMALL OIL WELL | ⬤ ABANDONED OIL WELL |

NOTE: Below make tracing from map, (when no map is obtainable make sketch) showing farm, center of section, this location with measurements and also wells, dry holes, or other locations in the vicinity of this location. Make copy to keep for reference and send original to Columbus office.



REMARKS:

SIGNED

R. L. Hager

Superintendent or Foreman.

Per # 2078

SUPT. OR FOREMAN.