



Western Michigan University
ScholarWorks at WMU

Legacy Scout Tickets from Pure Oil Company

8-20-2021

MGRRE_PureOilScoutTickets_Bond, Harry J._1_21111021110000

MGRRE

Western Michigan University

Follow this and additional works at: <https://scholarworks.wmich.edu/pure>



Part of the Geology Commons

WMU ScholarWorks Citation

MGRRE, "MGRRE_PureOilScoutTickets_Bond, Harry J._1_21111021110000" (2021). *Legacy Scout Tickets from Pure Oil Company*. 5563.

<https://scholarworks.wmich.edu/pure/5563>

This Document is brought to you for free and open access via ScholarWorks at WMU. It has been accepted for inclusion in Legacy Scout Tickets from Pure Oil Company by an authorized administrator of ScholarWorks at WMU. See the National Digital Catalogue - Science Base Catalogue for more collections submitted by MGRRE.



MGRRE_PureOilScoutTickets_Bond, Harry J._1_21111021110000

API 21111021110000

Permit Number 2111

Lease Name Bond, Harry J.

Well Number 1

County Midland

Township 13N

Range 01W

Section 7

2021 DEQ or Pure co_name Turner Petroleum Corporation

Pure Number 685

Latitude 43.5289

Longitude -84.47286

THE PURE OIL COMPANY

DATE July 12, 1938

LOCATION REPORT

No. 685STATE Michigan COUNTY Midland DISTRICT Porter TWP. Porter SEC. 7 TOWN 13 N RANGE 1 WWELL No. 1 (SERIAL No. 685) FARM Harry J. Bond ACRESNAME OF STREAM OR WATERS QUADRANGLE SW NE SEOPERATOR Turner Petroleum Corporation Map Porter Township, Midland County

Feet from North Line of Farm

" " East " " "

" " South " " "

" " West " " "

Feet from North Line of Section

" " East " " "

" " South " " "

" " West " " "

LEGEND

○ LOCATION

① RIG

⊕ DRILLING

☀ GAS WELL

● OIL WELL

⬮ SMALL OIL WELL

⊙ DRY HOLE

⬮ DRY SHOWING OIL

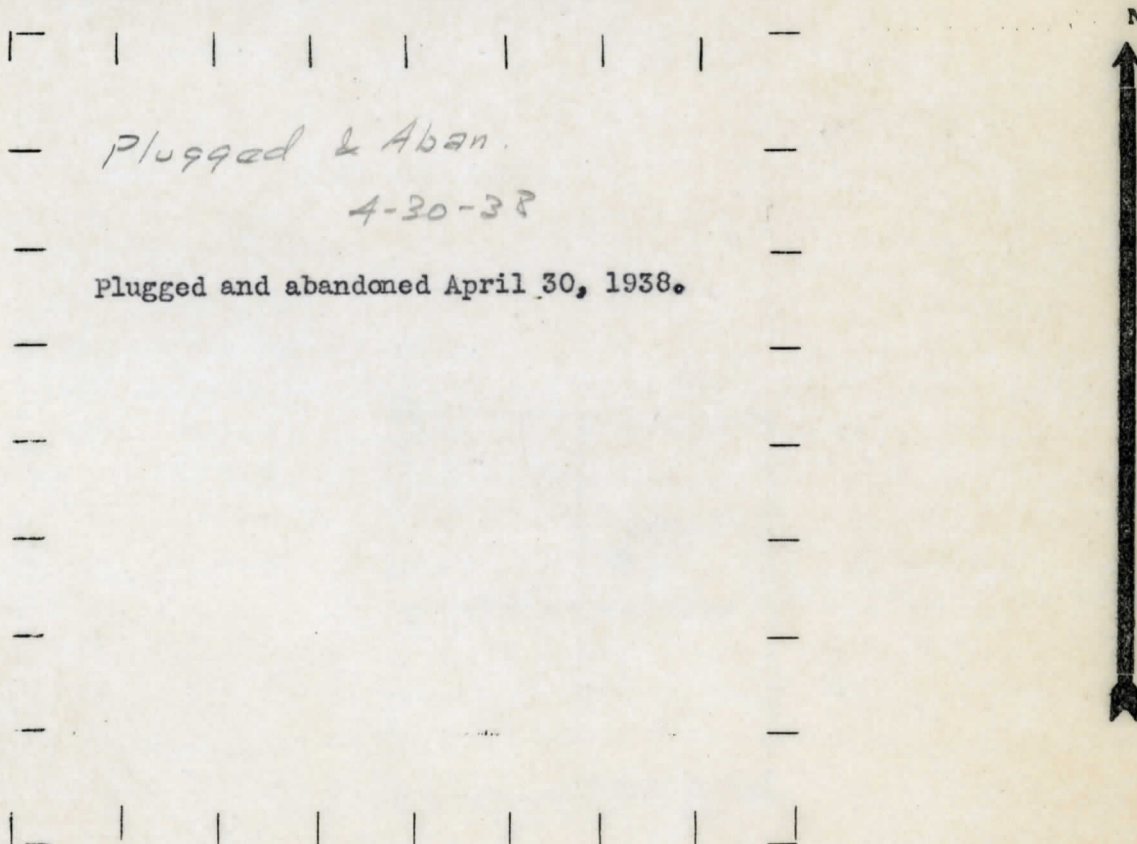
⊙ DRY SHOWING GAS

⊙ ABANDONED LOCATION

⬮ ABANDONED GAS WELL

⬮ ABANDONED OIL WELL

NOTE: Below make tracing from map, (when no map is obtainable make sketch) showing farm, center of section, this location with measurements and also wells, dry holes, or other locations in the vicinity of this location.



REMARKS:

SIGNED

Superintendent or Foreman.

STATE Michigan COUNTY Midland DIST. Porter TWP. Porter SEC. 7 TOWN. 13 N RANGE 1 W
DATE June 3, 1937 Corrected LOCATION REPORT No. 685
WELL No. 1 (SERIAL No. 685) FARM Harry J. Bond ACRES

NAME OF STREAM OR WATERS QUADRANGLE SW-NE-SE
SW NE SE

OPERATOR Turner Petroleum Corporation Map Porter Township, Midland County
Turner Pet. Corp. Porter - Mid

990 990 Feet from North Line of Farm

" " East " " "

" " South " " "

330 330 " " West " " "

990 990 Feet from North Line 1/4 Section

990 990 " " East " 1/4 "

" " South " " "

" " West " " "

LEGEND

○ LOCATION

① RIG

⊕ DRILLING

☀ GAS WELL

● OIL WELL

⦿ SMALL OIL WELL

⊖ DRY HOLE

⊕ DRY SHOWING OIL

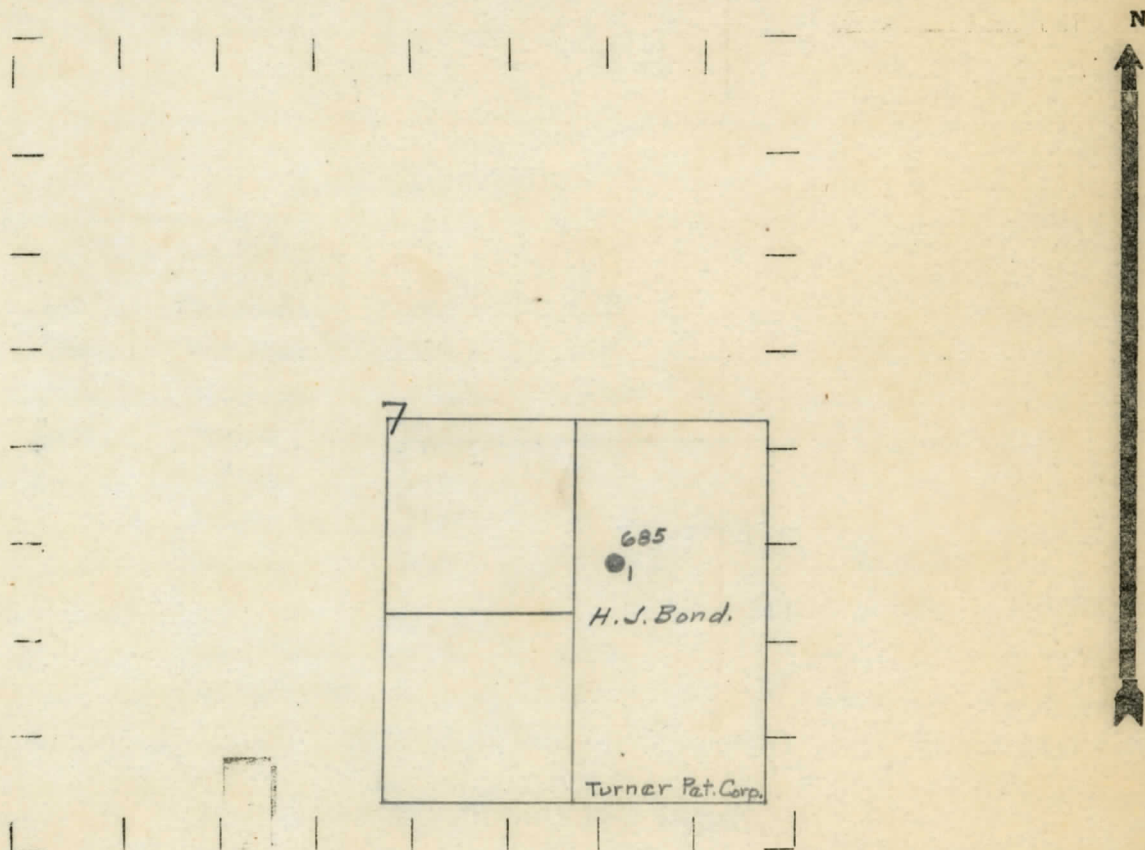
⊖ DRY SHOWING GAS

⊖ ABANDONED LOCATION

☀ ABANDONED GAS WELL

⦿ ABANDONED OIL WELL

NOTE: Below make tracing from map, (when no map is obtainable make sketch) showing farm, center of section, this location with measurements and also wells, dry holes, or other locations in the vicinity of this location.



REMARKS:

SIGNED

R. L. Page
Superintendent or Foreman.

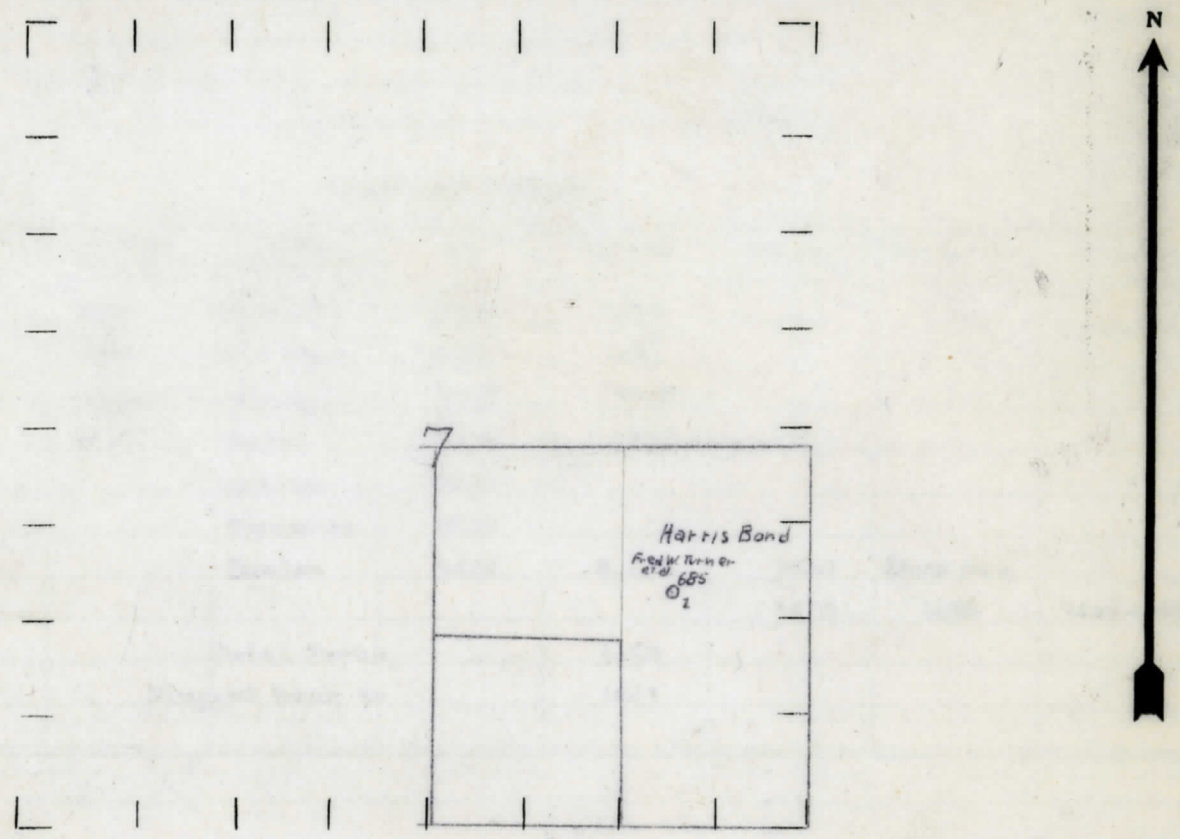
DATE June 2 1921 COLLECTED BY FOOTLICK BELOBI LOCATION REPORT No. 685

STATE Michigan COUNTY Midland DIST. Porter SEC. 7 TOWN 13 N RANGE 1 W
WELL No. 1 (SERIAL No. 685) FARM Harris Bond ACRES _____
NAME OF STREAM OR WATERS _____ QUADRANGLE SW-NE-SE
OPERATOR Fred W. Turner et al MAP Porter Township, Midland County

990 Feet from North Line of Farm
330 " " East " " "
" " South " " "
" " West " " "
990 Feet from North Line of Section
990 " " East " " "
" " South " " "
" " West " " "

- LEGEND**
- | | |
|------------------|----------------------|
| ○ LOCATION | ✦ DRY HOLE |
| ① RIG | ✦ DRY SHOWING OIL |
| ⊙ DRILLING | ✦ DRY SHOWING GAS |
| ⊙ GAS WELL | ✦ ABANDONED LOCATION |
| ● OIL WELL | ✦ ABANDONED GAS WELL |
| ⬢ SMALL OIL WELL | ✦ ABANDONED OIL WELL |

NOTE: Below make tracing from map, (when no map is obtainable make sketch) showing farm, center of section, this location with measurements and also wells, dry holes, or other locations in the vicinity of this location. Make copy to keep for reference and send original to Columbus office.



REMARKS: _____

SIGNED R. L. Hayes
Superintendent or Foreman.
Per 2111

COMPLETION RECORD

No. 685

DATE 10/4/34
 STATE Michigan COUNTY Midland DIST. Porter SEC. 7 TOWN 13N RANGE 1W
 WELL No. 1 (SERIAL No. 685) FARM Harry J. Bond ACRES

NAME OF STREAM OR WATERS QUADRANGLE

OPERATOR Fred W. Turner et al MAP Porter Township, Midland County

LOCATION REPORT SENT IN (DATE) 7/26/34

WELL STARTED (DATE) 7/24/34 WELL COMPLETED (DATE) 9/16/34

☐ OIL WELL ☐ GAS WELL ☐ DRY HOLE ☐ ABANDONED WELL

CROSS OUT THREE OF THE ABOVE
 WELL RECORD

Elevation 683.9'

DATE OF acid SHOT 9/29/34 NUMBER OF gallons QUARTS 1000
 1st 24 HOURS PRODUCTION 125 bbls..Potential, after acid BARRELS OR FEET
 2nd " " " " " "
 3rd " " " " " "
 4th " " " " " "
 5th " " " " " "

SAND AND CASING

CASING SIZE	WEIGHT	CASING Feet Inches	SAND Name and Nature	TOP	BOTTOM	TOP PAY	BOTTOM PAY	SALT WATER
10"		271	Marshall	1056	1212			
8 1/4		726	Red Rock	1212	1288			
6-5/8		1299	Sunbury	2315	2335			
5-3/16		3405	Berea	2335	2379			
			Antrim	2430				
			Traverse	2828				
			Dundee	3404	S.L.M.	3424	Show Gas	
						3430	3436	3446-3450
			Total Depth		3450			
			Plugged back to		3443			

REMARKS

NOTE:—MAKE COPY TO KEEP FOR REFERENCE AND SEND ORIGINAL TO CHICAGO OFFICE. LIST MATERIAL CHARGEABLE TO WELL ON OTHER SIDE.

SIGNED

S. H. Bell

SUPT. OR FOREMAN