



Western Michigan University
ScholarWorks at WMU

Legacy Scout Tickets from Pure Oil Company

8-20-2021

MGRRE_PureOilScoutTickets_Campbell, J.
W._7_21111021260000

MGRRE
Western Michigan University

Follow this and additional works at: <https://scholarworks.wmich.edu/pure>



Part of the Geology Commons

WMU ScholarWorks Citation

MGRRE, "MGRRE_PureOilScoutTickets_Campbell, J. W._7_21111021260000" (2021). *Legacy Scout Tickets from Pure Oil Company*. 5569.
<https://scholarworks.wmich.edu/pure/5569>

This Document is brought to you for free and open access via ScholarWorks at WMU. It has been accepted for inclusion in Legacy Scout Tickets from Pure Oil Company by an authorized administrator of ScholarWorks at WMU. See the National Digital Catalogue - Science Base Catalogue for more collections submitted by MGRRE.



MGRRE_PureOilScoutTickets_Campbell, J. W._7_21111021260000

API 21111021260000

Permit Number 2126

Lease Name Campbell, J. W.

Well Number 7

County Midland

Township 13N

Range 01W

Section 18

2021 DEQ or Pure co_name Summit Petroleum Corporation

Pure Number 692

Latitude 43.5143681

Longitude -84.4776114

WELL REPORT - OUTSIDE OPERATIONS

SERIAL NO. 692

STATE Michigan ~~TX~~ CO. Midland

OPERATOR Evaluation & Sales Service

FARM J.W. Campbell WELL NO. 7

TWP. Porter S. 18 T. 13N R. 1W

LOC. SW NW SE

WILDCAT ☐ FIELD ☐ FIELD NAME _____

MAP NO. _____ CO-ORD. _____ ELEV. _____

STATUS _____

Operator's name Corrected from:
Strange & Kortney

NORTH

| | | | | | | | |
|--|--|--|--|--|--|--|--|
| | | | | | | | |
| | | | | | | | |
| | | | | | | | |
| | | | | | | | |
| | | | | | | | |
| | | | | | | | |
| | | | | | | | |
| | | | | | | | |

DATE 2-27-56 SCOUT RFP

THE PURE OIL COMPANY

DATE February 1, 1939

LOCATION REPORT

No. 692

STATE Michigan COUNTY Midland DISTRICT Porter SEC. 18 TOWN 13 N RANGE 1 W

WELL No. 77 (SERIAL No. 692) FARM J. W. Campbell ACRES

NAME OF STREAM OR WATERS QUADRANGLE SW NW SE

OPERATOR Strange & Fortney Map Porter Township, Midland County

Strange & Fortney Porter - Mid.

Feet from North Line of Farm

" " East " " "

" " South " " "

" " West " " "

Feet from North Line of Section

" " East " " "

" " South " " "

" " West " " "

LEGEND

○ LOCATION

① RIG

⊕ DRILLING

☀ GAS WELL

● OIL WELL

● SMALL OIL WELL

⊖ DRY HOLE

⊖ DRY SHOWING OIL

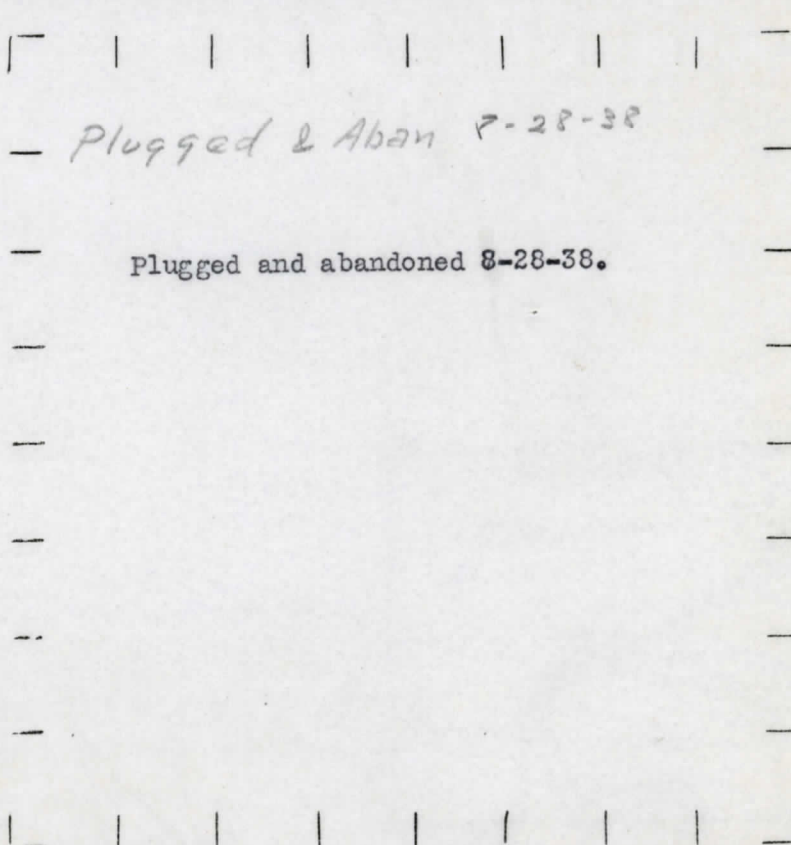
⊖ DRY SHOWING GAS

⊖ ABANDONED LOCATION

⊖ ABANDONED GAS WELL

⊖ ABANDONED OIL WELL

NOTE: Below make tracing from map, (when no map is obtainable make sketch) showing farm, center of section, this location with measurements and also wells, dry holes, or other locations in the vicinity of this location.



REMARKS:

SIGNED

Superintendent or Foreman.

DATE

8-8-34

LOCATION REPORT

No. 672

STATE Michigan COUNTY Midland DIST. Porter SEC. 18 TOWN 13N RANGE 1W
WELL No. 7 (SERIAL No. 692) FARM J. W. Campbell ACRES
NAME OF STREAM OR WATERS QUADRANGLE SW-NW-SE
OPERATOR Strange & Fortney MAP Porter Township, Midland County

Feet from North Line of Farm

" " East " " "

330 " " South " " "

330 " " West " " "

Feet from North Line of Section

2310 " " East " " "

1650 " " South " " "

" " West " " "

LEGEND

O LOCATION

① RIG

⊕ DRILLING

⊗ GAS WELL

● OIL WELL

⬮ SMALL OIL WELL

⬮ DRY HOLE

⬮ DRY SHOWING OIL

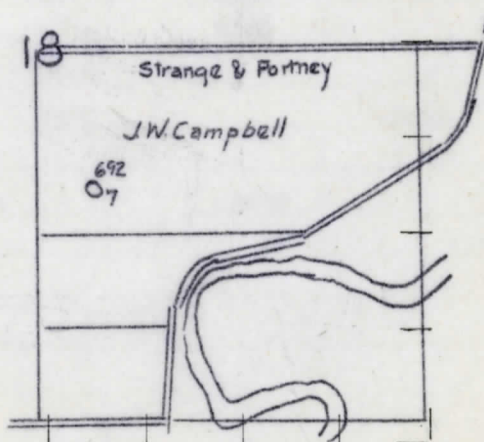
⬮ DRY SHOWING GAS

⬮ ABANDONED LOCATION

⬮ ABANDONED GAS WELL

⬮ ABANDONED OIL WELL

NOTE: Below make tracing from map, (when no map is obtainable make sketch) showing farm, center of section, this location with measurements and also wells, dry holes, or other locations in the vicinity of this location. Make copy to keep for reference and send original to Columbus office.



REMARKS:

SIGNED

R. L. Yegorov

Superintendent or Foreman.

Per # 2126

COMPLETION RECORD

DATE October 11, 1934

No. 692

STATE Michigan COUNTY Midland DIST. Porter SEC. 18 TOWN 13N RANGE 1W

WELL No. 7 (SERIAL No. 692) FARM J..W. Campbell ACRES

NAME OF STREAM OR WATERS QUADRANGLE SW-NW-SE

OPERATOR Strange & Fortney MAP Porter Township, Midland County

LOCATION REPORT SENT IN (DATE) 8/8/34

WELL STARTED (DATE) 8/4/34 WELL COMPLETED (DATE) 9/24/34

OIL WELL

GAS WELL

DRY HOLE

ABANDONED WELL

Elevation 685.6'

CROSS OUT THREE OF THE ABOVE

WELL RECORD

DATE OF acid SHOT ??? NUMBER OF gallons QUARTS 1000

1st 24 HOURS PRODUCTION Est. 50 bbls., natural. BARRELS OR FEET

| | | | | | | | | |
|-----|---|---|-------------|---|------------------------------|---|---|---|
| 1st | " | " | <u>2160</u> | " | <u>Potential, after acid</u> | " | " | " |
| 2nd | " | " | | | | " | " | " |
| 3rd | " | " | | | | " | " | " |
| 4th | " | " | | | | " | " | " |
| 5th | " | " | | | | " | " | " |

SAND AND CASING

| CASING SIZE | WEIGHT | CASING Feet Inches | SAND Name and Nature | TOP | BOTTOM | TOP PAY | BOTTOM PAY | SALT WATER |
|-------------|--------|-----------------------|-------------------------|------|--------|---------|------------|------------|
| 10" | | 264 | Marshall | 1035 | 1210 | | | |
| 8 1/4" | | 778 | Red Rock | 1210 | 1294 | | | |
| 6-5/8 | | 1298 | Berea | 2310 | 2350 | | | |
| 5-3/16 | | 3387 | Antrim | 2400 | 2806 | | | |
| | | | Traverse | 2806 | | | | |
| | | | Dundee | 3387 | | 3416 | 3418 | |
| | | | | | | 3437 | 3439 | |
| | | | Total Depth | | 3439 | | | |
| | | | | | | | | |
| | | | | | | | | |
| | | | | | | | | |
| | | | | | | | | |

REMARKS

NOTE: MAKE COPY TO KEEP FOR REFERENCE AND SEND ORIGINAL TO CHICAGO OFFICE. LIST MATERIAL CHARGEABLE TO WELL ON OTHER SIDE.

SIGNED

S. H. Bell

SUPT. OR FOREMAN