



Western Michigan University
ScholarWorks at WMU

Legacy Scout Tickets from Pure Oil Company

8-20-2021

MGRRE_PureOilScoutTickets_Breu, E._2_21111021760000

MGRRE

Western Michigan University

Follow this and additional works at: <https://scholarworks.wmich.edu/pure>



Part of the Geology Commons

WMU ScholarWorks Citation

MGRRE, "MGRRE_PureOilScoutTickets_Breu, E._2_21111021760000" (2021). *Legacy Scout Tickets from Pure Oil Company*. 5578.

<https://scholarworks.wmich.edu/pure/5578>

This Document is brought to you for free and open access via ScholarWorks at WMU. It has been accepted for inclusion in Legacy Scout Tickets from Pure Oil Company by an authorized administrator of ScholarWorks at WMU. See the National Digital Catalogue - Science Base Catalogue for more collections submitted by MGRRE.



MGRRE_PureOilScoutTickets_Breu, E._2_21111021760000

API 21111021760000

Permit Number 2176

Lease Name Breu, E.

Well Number 2

County Midland

Township 13N

Range 01W

Section 20

2021 DEQ or Pure co_name McClanahan Oil Company

Pure Number 710

Latitude 43.49801

Longitude -84.45557

THE PURE OIL COMPANY

DATE October 6, 1936

LOCATION REPORT

No. 710

STATE Michigan COUNTY Midland DIST. Porter SEC. 20 TOWN 13 N RANGE 1 W

WELL No. 22 (SERIAL No. 710) FARM Eliza Breu ACRES NE SW SE

NAME OF STREAM OR WATERS _____ QUADRANGLE NE SW SE

OPERATOR McClanahan Oil Company Map Porter Township, Midland County
McClanahan Oil Co. Porter - Mid. Co.

Feet from North Line of Farm

" " East " " "

" " South " " "

" " West " " "

Feet from North Line of Section

" " East " " "

990 990 " " South " " "

990 990 " " West " 1/4

LEGEND

○ LOCATION

① RIG

⊕ DRILLING

☼ GAS WELL

● OIL WELL

◆ SMALL OIL WELL

⊖ DRY HOLE

◆ DRY SHOWING OIL

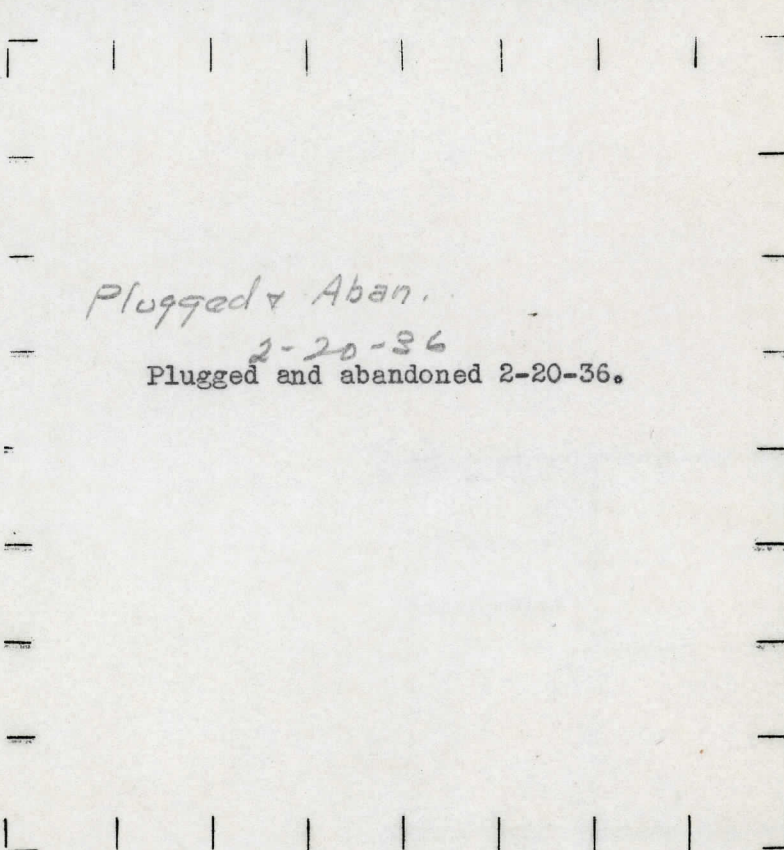
⊖ DRY SHOWING GAS

⊖ ABANDONED LOCATION

☼ ABANDONED GAS WELL

● ABANDONED OIL WELL

NOTE: Below make tracing from map, (when no map is obtainable make sketch) showing farm, center of section, this location with measurements and also wells, dry holes, or other locations in the vicinity of this location.



REMARKS:

SIGNED

R. L. Yeager

Superintendent or Foreman.

DATE October 4, 1934

LOCATION REPORT
THE PURE OIL COMPANY

No. 710

DATE October 4, 1934

Correction
CORRECTED
Midland

LOCATION REPORT

CORRECTED

No. 710

STATE Michigan

COUNTY Midland

DIST. Porter

SEC. 20

TOWN 13N

RANGE 1W

WELL No. 2 (SERIAL No. 710) FARM

PREC. Eliza Brew

ACRES

NAME OF STREAM OR WATERS

QUADRANGLE NE-SW-SE

OPERATOR McClanahan Oil Company

Map Porter Township, Midland County

McClanahan Oil Co.

Porter Twp - Mid Co.

Feet from North Line of Farm

330 330 " " East " " "

990 990 " " South " " "

Feet from North Line of Section

" " East " " "

990 990 " " South " " "

990 990 " " West " " 1 1/4

LEGEND

○ LOCATION

⊙ RIG

⊕ DRILLING

☼ GAS WELL

● OIL WELL

⦿ SMALL OIL WELL

⊖ DRY HOLE

⦿ DRY SHOWING OIL

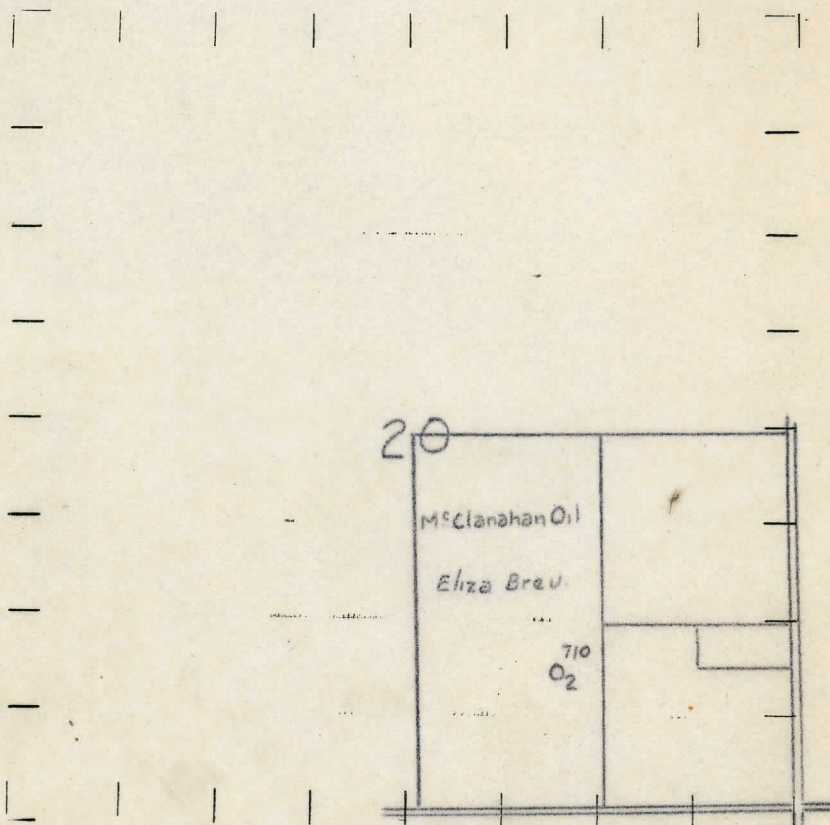
☼ DRY SHOWING GAS

⊖ ABANDONED LOCATION

☼ ABANDONED GAS WELL

⦿ ABANDONED OIL WELL

NOTE: Below make tracing from map, (when no map is obtainable make sketch) showing farm, center of section, this location with measurements and also wells, dry holes, or other locations in the vicinity of this location.



REMARKS:

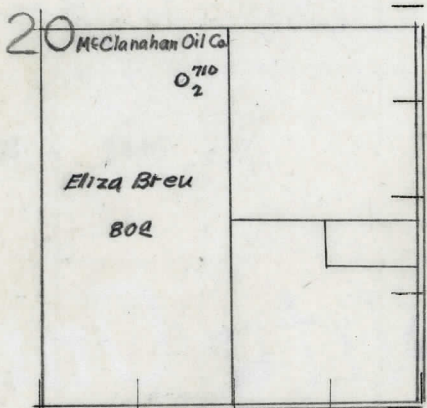
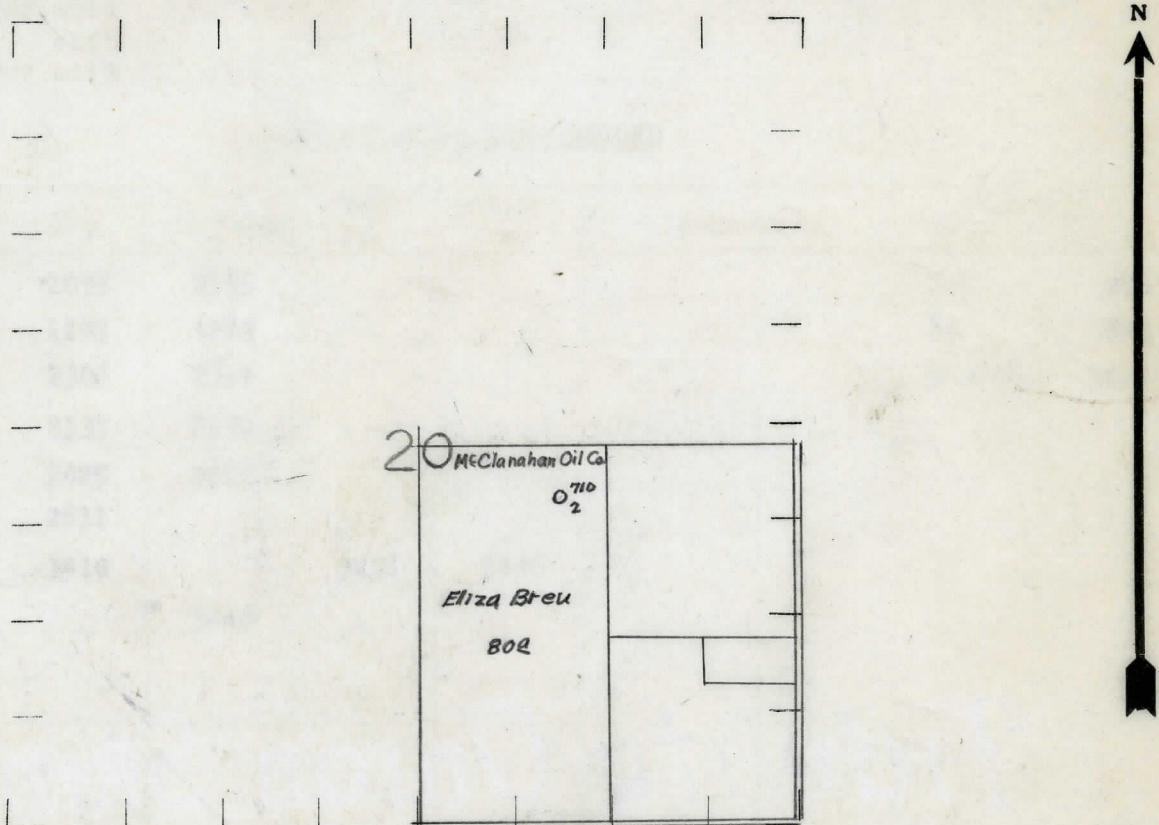
SIGNED

R. A. Yeager
Superintendent or Foreman

DATE 9-13-34 9/13/34
 STATE Michigan COUNTY Midland DIST. Porter TWP. Porter SEC. 20 TOWN 13N RANGE 1W
 WELL No. 2 (SERIAL No. 710) FARM _____ ACRES _____
 NAME OF STREAM OR WATERS _____ QUADRANGLE NE-NW-SE
 OPERATOR McClanahan Oil Company MAP Porter Township, Midland County
McClanahan Oil Co. Porter Twp. - Midland Co.

330 330 Feet from North Line of Farm
 330 330 " " East " " "
 " " South " " "
 " " West " " "
 330 330 Feet from North Line of Section
 " " East " " "
 " " South " " "
 990 990 " " West " " "
LEGEND
 O LOCATION ✦ DRY HOLE
 ① RIG ✦ DRY SHOWING OIL
 ⊕ DRILLING ✦ DRY SHOWING GAS
 ⚙ GAS WELL ✦ ABANDONED LOCATION
 ● OIL WELL ✦ ABANDONED GAS WELL
 ⚙ SMALL OIL WELL ✦ ABANDONED OIL WELL

NOTE: Below make tracing from map, (when no map is obtainable make sketch) showing farm, center of section, this location with measurements and also wells, dry holes, or other locations in the vicinity of this location. Make copy to keep for reference and send original to Columbus office.



REMARKS: _____

SIGNED R. L. [Signature]
 Superintendent or Foreman.

Michigan Producing Division

Date 2/7/35 No. 710

State Michigan County Midland Dist. Porter Twp. Porter Sec. 20 Twp. 13N Rge. 1W

Well No. 2 (Serial No.) 710 (County No.) 710 Farm Eliza Breu Acres

Operator McClanahan Oil Company Information secured from Scouting Dept. by

Date well started 11/14/34 Date well completed 1/25/35 Elevation 691.3'

PRODUCTION RECORD

1st 24 hours natural	Est. 80 bbls.			
2nd 24 hours natural				
	No. of			
Date of shot	quarts	From	to	From to
Date of acid	No. of gallons			
	shot			
1st 24 hours after acid				
	shot			
2nd 24 hours after acid				

FORMATION AND CASING RECORD

[illegible]

Remarks	Showing some salt water!!	Show Oil & Gas 2349' - Show Oil & Gas 2934'
---------	---------------------------	---

Signed

G. H. Bell