



Western Michigan University
ScholarWorks at WMU

Legacy Scout Tickets from Pure Oil Company

8-20-2021

MGRRE_PureOilScoutTickets_Allied_1_na

MGRRE

Western Michigan University

Follow this and additional works at: <https://scholarworks.wmich.edu/pure>



Part of the Geology Commons

WMU ScholarWorks Citation

MGRRE, "MGRRE_PureOilScoutTickets_Allied_1_na" (2021). *Legacy Scout Tickets from Pure Oil Company*. 5580.

<https://scholarworks.wmich.edu/pure/5580>

This Document is brought to you for free and open access via ScholarWorks at WMU. It has been accepted for inclusion in Legacy Scout Tickets from Pure Oil Company by an authorized administrator of ScholarWorks at WMU. See the National Digital Catalogue - Science Base Catalogue for more collections submitted by MGRRE.



MGRRE_PureOilScoutTickets_Allied_1_na

API na

Permit Number na

Lease Name Allied

Well Number 1

County Midland

Township 13N

Range 01W

Section 27

2021 DEQ or Pure co_name L. Kl Chamlin, Trustee

Pure Number 713

Latitude 43.4880162

Longitude -84.4195955

DATE October 4, 1934

LOCATION REPORT

No. 713STATE Michigan

COUNTY

Midland

DIST.

Porter

TWP.

Porter

SEC.

27

TOWN

13N

RANGE

1WWELL No. 1(SERIAL No. 713)

FARM

PREC.

AlliedAllied

ACRES

NAME OF STREAM OR WATERS

QUADRANGLE

NW-SW-NW
NW-SW-NWOPERATOR L. K. Chamblin, Trustee

Map

Porter Township, Midland CountyL. K. Chamblin, Tr.Porter Twp - Mid - Co.330 330 Feet from North Line of Farm

" " East " " "

" " South " " "

330 330 " " West " " "

Feet from North Line of Section

" " East " " "

" " South " " 1 1/4990 990 " " West " " "

LEGEND

○ LOCATION

① RIG

⊕ DRILLING

☀ GAS WELL

● OIL WELL

● SMALL OIL WELL

⊖ DRY HOLE

⊖ DRY SHOWING OIL

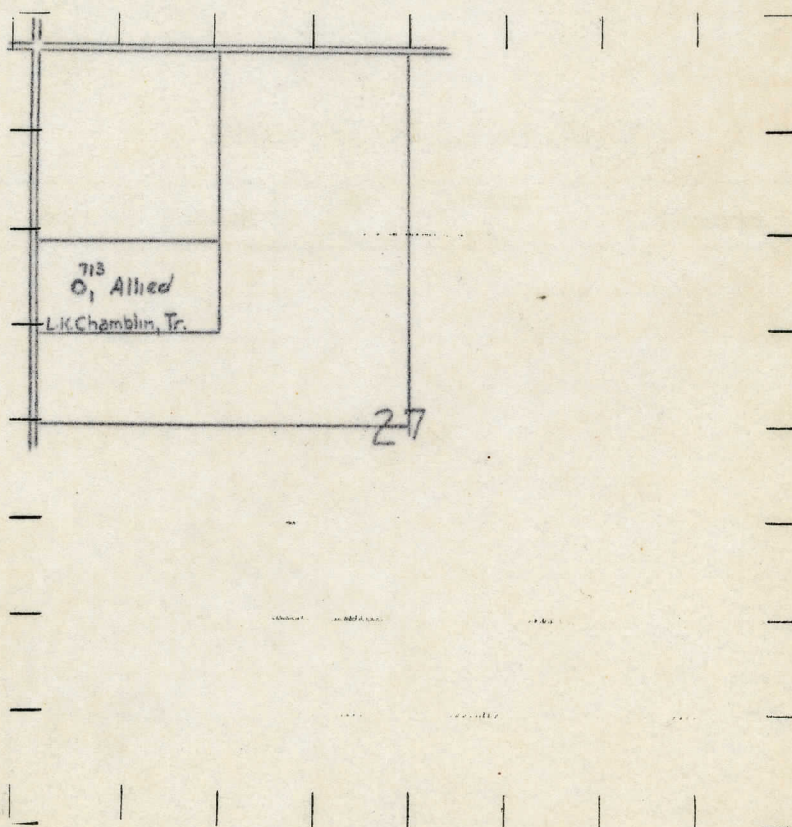
⊖ DRY SHOWING GAS

⊖ ABANDONED LOCATION

⊖ ABANDONED GAS WELL

⊖ ABANDONED OIL WELL

NOTE: Below make tracing from map, (when no map is obtainable make sketch) showing farm, center of section, this location with measurements and also wells, dry holes, or other locations in the vicinity of this location.



REMARKS:

SIGNED

Superintendent or Foreman.

Division

No. 713

Dist.

Twp.

(Serial No.)

(County No.)

Information secured from

Date well completed

PRODUCTION RECORD

LOCATION ABANDONED

2nd 24 hours natural

No. of

quarts

No. of gallons

shot

1st 24 hours after acid

shot

2nd 24 hours after acid

FORMATION AND CASING RECORD

[illegible]

Remarks

Signed

Wm Bell