



Western Michigan University
ScholarWorks at WMU

Legacy Scout Tickets from Pure Oil Company

8-20-2021

**MGRRE_PureOilScoutTickets_Carter, Wm. Maywood &
Wife_5_21111022360000**

MGRRE
Western Michigan University

Follow this and additional works at: <https://scholarworks.wmich.edu/pure>



Part of the Geology Commons

WMU ScholarWorks Citation

MGRRE, "MGRRE_PureOilScoutTickets_Carter, Wm. Maywood & Wife_5_21111022360000" (2021). *Legacy Scout Tickets from Pure Oil Company*. 5590.
<https://scholarworks.wmich.edu/pure/5590>

This Document is brought to you for free and open access via ScholarWorks at WMU. It has been accepted for inclusion in Legacy Scout Tickets from Pure Oil Company by an authorized administrator of ScholarWorks at WMU. See the National Digital Catalogue - Science Base Catalogue for more collections submitted by MGRRE.



MGRRE_PureOilScoutTickets_Carter, Wm. Maywood & Wife_5_21111022360000

API 21111022360000

Permit Number 2236

Lease Name Carter, Wm. Maywood & Wife

Well Number 5

County Midland

Township 13N

Range 01W

Section 18

2021 DEQ or Pure co_name Summit Petroleum Corporation

Pure Number 729

Latitude 43.5142214

Longitude -84.47999

11-15-34

The Pure Oil Company
THE PURE OIL COMPANYDATE 11/15/34

LOCATION REPORT

No. 729STATE Michigan COUNTY MidlandDIST. Porter
TWP. PorterSEC. 18 TOWN 13N RANGE 1WWELL No. 5 (SERIAL No. 729) FARMPREC. Wm. M. Carter

ACRES

NAME OF STREAM OR WATERS

QUADRANGLE SE-NE-SWOPERATOR Carter Lease, IncorporatedMap Porter Township, Midland County990 990 Feet from North Line of Farm330 330 " " East " " "

" " South " " "

" " West " " "

Feet from North Line of Section

330 330 " " East " " $\frac{1}{4}$ 1650 1650 " " South " " "

" " West " " "

LEGEND

○ LOCATION

① RIG

⊕ DRILLING

☀ GAS WELL

● OIL WELL

⦿ SMALL OIL WELL

⊖ DRY HOLE

⦿ DRY SHOWING OIL

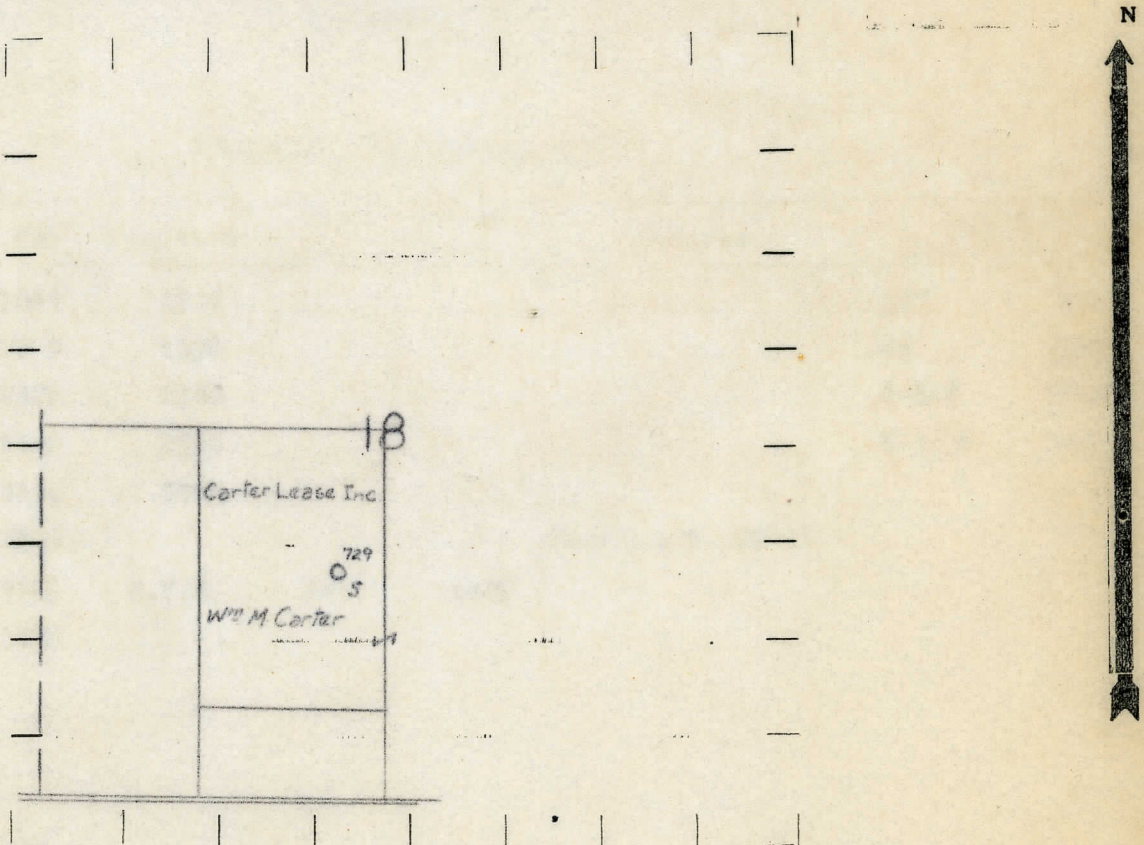
⊖ DRY SHOWING GAS

⊖ ABANDONED LOCATION

☀ ABANDONED GAS WELL

⦿ ABANDONED OIL WELL

NOTE: Below make tracing from map, (when no map is obtainable make sketch) showing farm, center of section, this location with measurements and also wells, dry holes, or other locations in the vicinity of this location.



REMARKS:

SIGNED

Superintendent or Foreman.

Signed L. H. Bell