



Western Michigan University
ScholarWorks at WMU

Legacy Scout Tickets from Pure Oil Company

8-20-2021

**MGRRE_PureOilScoutTickets_Carter, Wm. Maywood &
Wife_6_21111022370000**

MGRRE
Western Michigan University

Follow this and additional works at: <https://scholarworks.wmich.edu/pure>



Part of the Geology Commons

WMU ScholarWorks Citation

MGRRE, "MGRRE_PureOilScoutTickets_Carter, Wm. Maywood & Wife_6_21111022370000" (2021). *Legacy Scout Tickets from Pure Oil Company*. 5591.
<https://scholarworks.wmich.edu/pure/5591>

This Document is brought to you for free and open access via ScholarWorks at WMU. It has been accepted for inclusion in Legacy Scout Tickets from Pure Oil Company by an authorized administrator of ScholarWorks at WMU. See the National Digital Catalogue - Science Base Catalogue for more collections submitted by MGRRE.



MGRRE_PureOilScoutTickets_Carter, Wm. Maywood & Wife_6_21111022370000

API 21111022370000

Permit Number 2237

Lease Name Carter, Wm. Maywood & Wife

Well Number 6

County Midland

Township 13N

Range 01W

Section 18

2021 DEQ or Pure co_name Summit Petroleum Corporation

Pure Number 730

Latitude 43.5125703

Longitude -84.4776642

DATE February 20, 1941
DATE November 15, 1934

LOCATION REPORT
LOCATION REPORT

No. 730

STATE Michigan COUNTY Midland TWP. Porter SEC. 18 TOWN 13N RANGE 1W
WELL No. 6 (SERIAL No. 730) FARM William M. Carter ACRES

NAME OF STREAM OR WATERS QUADRANGLE NW SW SE

OPERATOR Carter Lease, Incorporated Map Porter Township, Midland County

Feet from North Line of Farm

" " East " " "

" " South " " "

" " West " " "

Feet from North Line of Section

" " East " " "

" " South " " "

" " West " " "

LEGEND

○ LOCATION

⊙ RIG

⊕ DRILLING

⊗ GAS WELL

● OIL WELL

⦿ SMALL OIL WELL

⊖ DRY HOLE

⦿ DRY SHOWING OIL

⊖ DRY SHOWING GAS

⊖ ABANDONED LOCATION

⦿ ABANDONED GAS WELL

⦿ ABANDONED OIL WELL

NOTE: Below make tracing from map. (when no map is obtainable make sketch) showing farm, center of section, this location with measurements and also wells, dry holes, or other locations in the vicinity of this location.

Plugged and abandoned 5-1-40.

Total Depth 4733'.

N

REMARKS:

SIGNED

Superintendent or Foreman.

Feet from North Line of Farm

OPERATOR Carter Lease, Incorporated Map Porter Township, Midland County

NAME OF STREAM OR WATERS QUADRANGLE NW-SW-SE

WELL No. 6 (SERIAL No. 730) FARM Wm. M. Carter ACRES

NAME OF STREAM OR WATERS QUADRANGLE NW-SW-SE

OPERATOR Carter Lease, Incorporated Map Porter Township, Midland County

330 330 Feet from North Line of Farm

660 660 " " East " " "

" " South " " "

" " West " " "

Feet from North Line of Section

" " East " " "

990 990 " " South " " "

330 330 " " West " " "

LEGEND

○ LOCATION

① RIG

⊕ DRILLING

☼ GAS WELL

● OIL WELL

⦿ SMALL OIL WELL

⊖ DRY HOLE

⦿ DRY SHOWING OIL

⦿ DRY SHOWING GAS

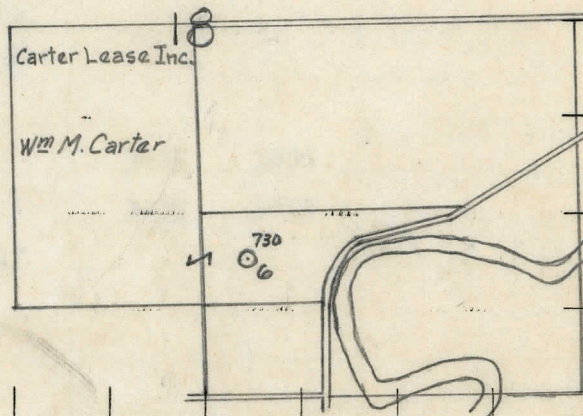
⦿ ABANDONED LOCATION

⦿ ABANDONED GAS WELL

⦿ ABANDONED OIL WELL

NOTE: Below make tracing from map, (when no map is obtainable make sketch) showing farm, center of section, this location with measurements and also wells, dry holes, or other locations in the vicinity of this location.

5-1-40



REMARKS:

SIGNED

R. A. V. Vega
Superintendent or Foreman.

Michigan Producing Division

Date February 21, 1935 No. 730
State Michigan County Midland Dist. Porter
Twp. 18 Sec. 13N Rge. 1W
Well No. 6 (Serial No.) 730 (County No.) 730 Farm Wm. M. Carter Acres
Operator Carter Lease, Inc. Information secured from Scouting Department
Date well started 12/5/34 Date well completed 2/8/35 Elevation 686.2'

PRODUCTION RECORD

1st 24 hours natural **Filled up 2000'**

2nd 24 hours natural

Date of shot No. of quarts From to From to

Date of acid **2/11/35** No. of gallons **1000**

shot

1st 24 hours after acid **350 bbls. net**

shot

2nd 24 hours after acid

FORMATION AND CASING RECORD

[illegible]

Remarks

Signed

Date **November 20, 1940** No. **730**
 State **Mich.** County **Midland** Twp. **Porter** Sec. **18** Twp. **13 N** Rge. **1 W**
 (Serial No.)
 Well No. **6** (~~county no.~~) **730** Farm **Wm. M. Carter** Acres
 Operator **Carter Lease, Inc.** Information secured ~~from~~ By **Scouting Department**
 Date well started **7-19-39** Dated well completed **7-22-40** Elevation **686.2**

PRODUCTION RECORD

1st 24 hours natural **Dry Hole**
 2nd 24 hours natural
 Date of shot No. of quarts From to From to
 Date of acid No. of gallons
 shot
 1st 24 hours after acid
 shot
 2nd 24 hours after acid

FORMATION AND CASING RECORD

Formation	Top	Bottom	Top Pay	Bottom Pay	Remarks	Casing	
						Size	Set at
				3456	H.F.S.W.	5-3/16"	4265
Monroe	3521			3552	Black salt water.		
				3646	Show gas.		
				3795	Rainbow oil.		
				3812	Show oil.		
				4128	Show black salt water.		
				4150	H.F. black salt water.		
				4285	Hole full water.		
				4306	Show oil and gas.		
Sand	4300	4306		4350	Show oil and gas.		
Sylvania	4583	S.L.M.					
Total Depth		4733					

Remarks **5-3/16" casing set several times to dry hole up. This is an old well drilled deeper - originally completed as an oil well at a total depth of 3417' on 2-8-35. Additional information to our former Completion Report. 3531' C.T.M. equals 3546' S.L.M.; 4580' C.T.M. equals 4577' S.L.M.**

Signed **D. C. Shackelford**