



Western Michigan University
ScholarWorks at WMU

Legacy Scout Tickets from Pure Oil Company

8-20-2021

**MGRRE_PureOilScoutTickets_Beougher, Rosa &
Archie_1_21111022930000**

MGRRE
Western Michigan University

Follow this and additional works at: <https://scholarworks.wmich.edu/pure>



Part of the Geology Commons

WMU ScholarWorks Citation

MGRRE, "MGRRE_PureOilScoutTickets_Beougher, Rosa & Archie_1_21111022930000" (2021). *Legacy Scout Tickets from Pure Oil Company*. 5597.
<https://scholarworks.wmich.edu/pure/5597>

This Document is brought to you for free and open access via ScholarWorks at WMU. It has been accepted for inclusion in Legacy Scout Tickets from Pure Oil Company by an authorized administrator of ScholarWorks at WMU. See the National Digital Catalogue - Science Base Catalogue for more collections submitted by MGRRE.



MGRRE_PureOilScoutTickets_Beougher, Rosa & Archie_1_21111022930000

API 21111022930000

Permit Number 2293

Lease Name Beougher, Rosa & Archie

Well Number 1

County Midland

Township 13N

Range 01E

Section 25

2021 DEQ or Pure co_name Atha, Hunter

Pure Number 742

Latitude 43.50046

Longitude -84.30828

DATE December 28, 1934

LOCATION REPORT

No. 742STATE Michigan COUNTY MidlandDIST. Mt. HaleyTWP. Mt. HaleySEC. 25TOWN 13NRANGE 1EWELL No. 1 (SERIAL No. 742) FARM Rosa & Archie BeougherPREC. Rosa & Archie Beougher

ACRES

NAME OF STREAM OR WATERS

QUADRANGLE

C-S¹-NW-SW
C-S¹-NW-SWOPERATOR W. Hunter Atha

Map

Mt. Haley Township, Midland CountyW. Hunter AthaMt Haley - Mid990 990

Feet from North Line of Farm

" " East " " "

" " South " " "

660 660 " " West " " "990 990 Feet from North Line of Section

" " East " " "

" " South " " "

660 660 " " West " " "

LEGEND

○ LOCATION

① RIG

⊕ DRILLING

☼ GAS WELL

● OIL WELL

● SMALL OIL WELL

⊖ DRY HOLE

⊖ DRY SHOWING OIL

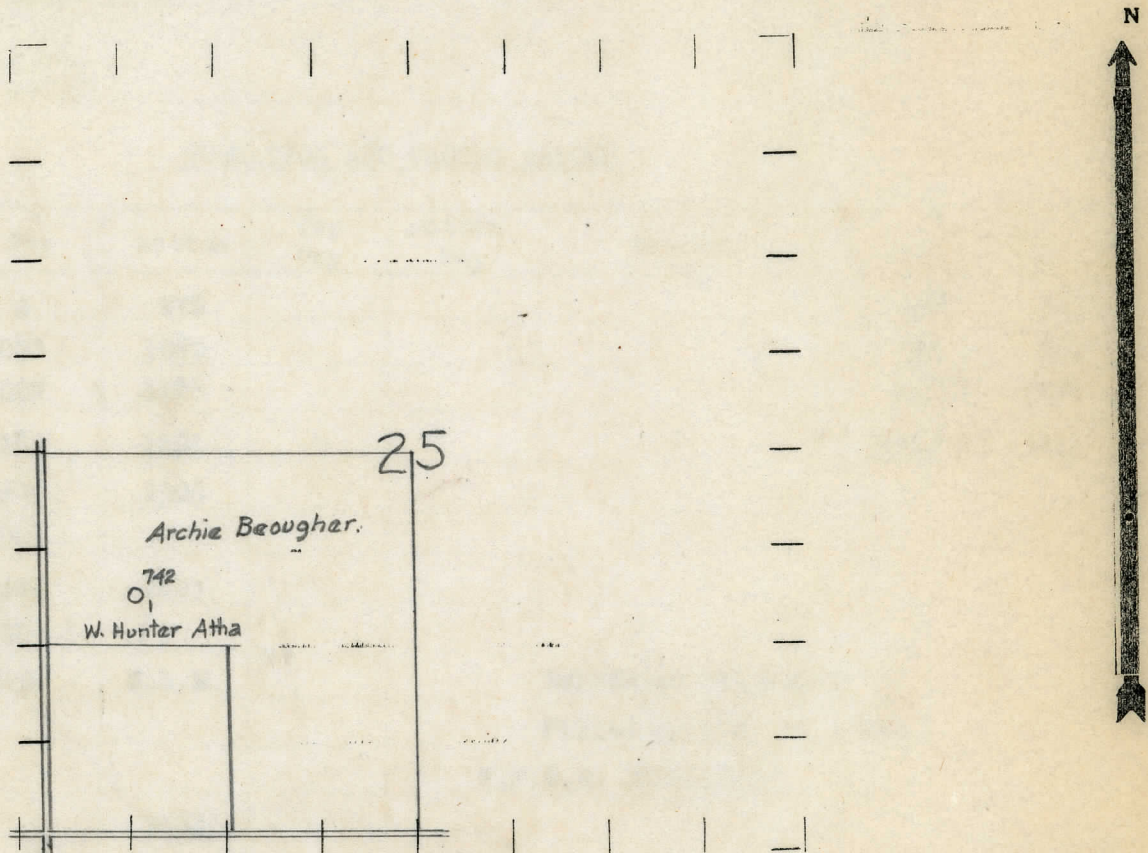
⊖ DRY SHOWING GAS

⊖ ABANDONED LOCATION

⊖ ABANDONED GAS WELL

⊖ ABANDONED OIL WELL

NOTE: Below make tracing from map, (when no map is obtainable make sketch) showing farm, center of section, this location with measurements and also wells, dry holes, or other locations in the vicinity of this location.



REMARKS:

SIGNED

P. L. Yeager
Superintendent or Foreman.

Michigan Producing Division

Date **March 7, 1935** No. **742**
 State **Michigan** County **Midland** Dist. **Mt. Haley** Sec. **25** Twp. **13N** Rge. **1E**
 Well No. **1** (Serial No.) (County No.) **742** Farm **Rose & Archie Beougher** Acres
 Operator **W. Hunter Atha** Information secured ~~from~~ ^{by} **Scouting Dept.**
 Date well started **1/8/35** Date well completed **2/28/35** Elevation **663.8'**

PRODUCTION RECORD

1st 24 hours natural **Dry Hole**
 2nd 24 hours natural
 Date of shot No. of quarts From to From to
 Date of acid No. of gallons
 1st 24 hours after acid shot
 2nd 24 hours after acid shot

FORMATION AND CASING RECORD

Formation	Top	Bottom	Top Pay	Bottom Pay	Remarks	Casing	
						Size	Set at
Drift	0	278				10"	302'
Stray	1070	1080				8 1/4"	862
Marshall	1095	1187				6-5/8"	1278
Red Rock	1187	1251				5-3/16"	3233
Sunbury	2290	2308					
Berea	2308						
Antrim	2342	2803					
Traverse	2803 ?						
Dundee	3434	S.L.M.			Salt Water 3515-3520'		
					Filled up 150' in 1 hr.		
					H.F.S.W. 3520-3533'		
Total Depth		3533'					

Remarks

Signed *J. H. Bell*