



Western Michigan University
ScholarWorks at WMU

Legacy Scout Tickets from Pure Oil Company

8-20-2021

MGRRE_PureOilScoutTickets_Lalonde, Mary_1_21111022940000

MGRRE

Western Michigan University

Follow this and additional works at: <https://scholarworks.wmich.edu/pure>



Part of the Geology Commons

WMU ScholarWorks Citation

MGRRE, "MGRRE_PureOilScoutTickets_Lalonde, Mary_1_21111022940000" (2021). *Legacy Scout Tickets from Pure Oil Company*. 5598.

<https://scholarworks.wmich.edu/pure/5598>

This Document is brought to you for free and open access via ScholarWorks at WMU. It has been accepted for inclusion in Legacy Scout Tickets from Pure Oil Company by an authorized administrator of ScholarWorks at WMU. See the National Digital Catalogue - Science Base Catalogue for more collections submitted by MGRRE.



MGRRE_PureOilScoutTickets_Lalonde, Mary_1_21111022940000

API 21111022940000

Permit Number 2294

Lease Name Lalonde, Mary

Well Number 1

County Midland

Township 13N

Range 01E

Section 27

2021 DEQ or Pure co_name Atha, Hunter

Pure Number 743

Latitude 43.50068

Longitude -84.34803

THE PURE OIL COMPANY

DATE December 28, 1934

LOCATION REPORT

No. 743STATE Michigan COUNTY Midland

DIST.

TWP. Mt. HaleySEC. 27TOWN 13NRANGE 1EWELL No. 1 (SERIAL No. 743) FARMPREC. Rosa & Archie SeougharTwp. Mary LeLonde

ACRES

NAME OF STREAM OR WATERS

QUADRANGLE C-S₂-NW-SWOPERATOR W. Hunter AthaMap Mt. Haley Township, Midland County

Feet from North Line of Farm

660 660 " " East " " "330 330 " " South " " "660 660 " " West " " "990 990 Feet from North Line of Section

" " East " " "

" " South " " "

660 660 " " West " " "

LEGEND

○ LOCATION

① RIG

⊕ DRILLING

☼ GAS WELL

● OIL WELL

⊙ SMALL OIL WELL

⊙ DRY HOLE

⊙ DRY SHOWING OIL

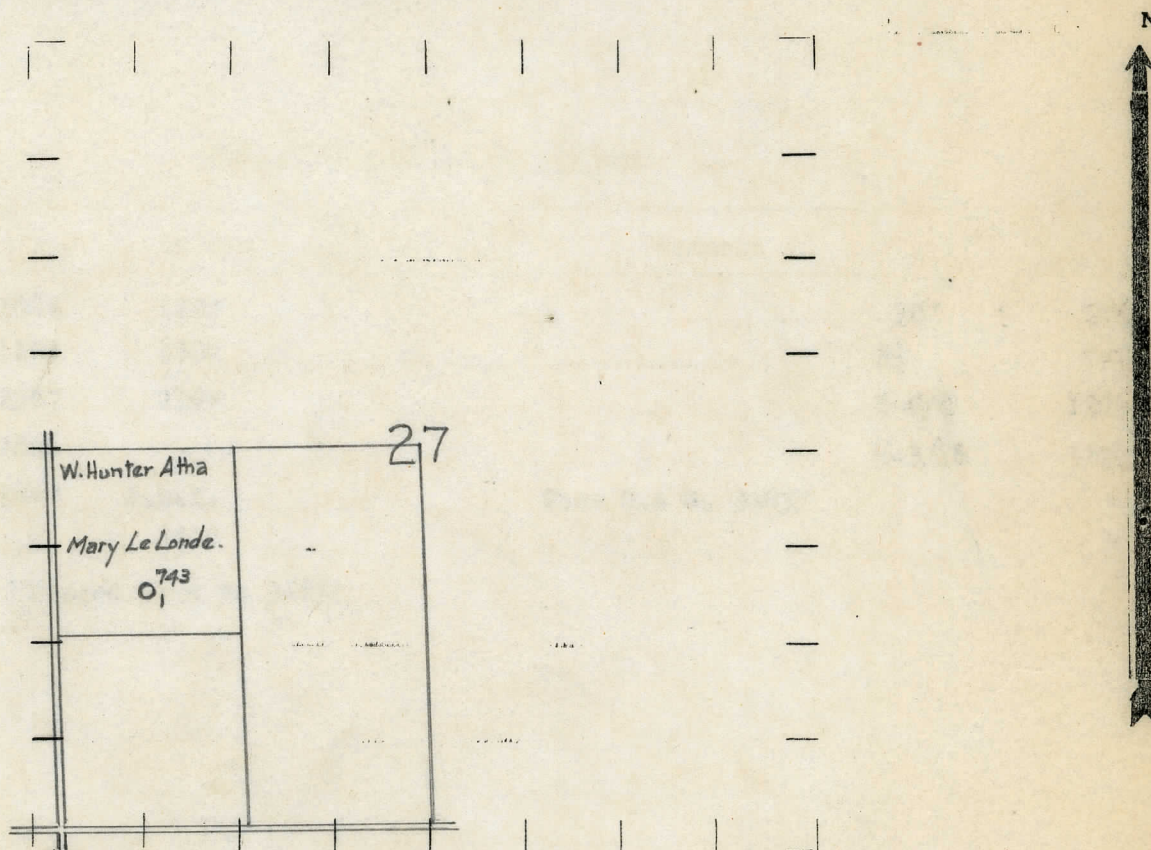
⊙ DRY SHOWING GAS

⊙ ABANDONED LOCATION

☼ ABANDONED GAS WELL

⊙ ABANDONED OIL WELL

NOTE: Below make tracing from map, (when no map is obtainable make sketch) showing farm, center of section, this location with measurements and also wells, dry holes, or other locations in the vicinity of this location.



REMARKS:

SIGNED

A. L. Yeager
Superintendent or Foreman.

Michigan Producing Division

Date 5/16/35 No. 743
State Michigan County Midland Dist.
Twp. Mt. Haley Sec. 27 Twp. 13N Rge. 1E
(Serial No.)
Well No. 1 (County No.) 743 Farm Mary LaLonde Acres
Operator W. Hunter Atha by
Information secured from Scouting Dept.
Date well started 1/29/35 Date well completed 3/27/35 Elevation 675.2'

PRODUCTION RECORD

1st 24 hours natural **Dry Hole**

2nd 24 hours natural

Date of shot No. of quarts From to From to

Date of acid **4/11/35 & 5/1/35** No. of gallons **2000**

shot

1st 24 hours after acid

shot

2nd 24 hours after acid

FORMATION AND CASING RECORD

[illegible]

Remarks Pumped approximately 4 bbls. per day after acid.

Signed *B. N. Bell*