



Western Michigan University
ScholarWorks at WMU

Legacy Scout Tickets from Pure Oil Company

8-20-2021

MGRRE_PureOilScoutTickets_Bolen, John_1_21111023460000

MGRRE

Western Michigan University

Follow this and additional works at: <https://scholarworks.wmich.edu/pure>



Part of the Geology Commons

WMU ScholarWorks Citation

MGRRE, "MGRRE_PureOilScoutTickets_Bolen, John_1_21111023460000" (2021). *Legacy Scout Tickets from Pure Oil Company*. 5601.

<https://scholarworks.wmich.edu/pure/5601>

This Document is brought to you for free and open access via ScholarWorks at WMU. It has been accepted for inclusion in Legacy Scout Tickets from Pure Oil Company by an authorized administrator of ScholarWorks at WMU. See the National Digital Catalogue - Science Base Catalogue for more collections submitted by MGRRE.



MGRRE_PureOilScoutTickets_Bolen, John_1_21111023460000

API 21111023460000

Permit Number 2346

Lease Name Bolen, John

Well Number 1

County Midland

Township 14N

Range 02W

Section 16

2021 DEQ or Pure co_name Oryx Energy Company

Pure Number 750

Latitude 43.607

Longitude -84.55721

WELL REPORT - OUTSIDE OPERATIONS

Form 24 5M-3-8 34 100-Peco

SERIAL NO. 750

STATE Michigan ~~PSH~~ CO. Midland

OPERATOR Huron Oil & Gas Company

FARM John Bolen WELL NO. 1

TWP. Greendale S. 16 T. 14N R. 2W

~~SURVEY~~

LOC. NW SW NE

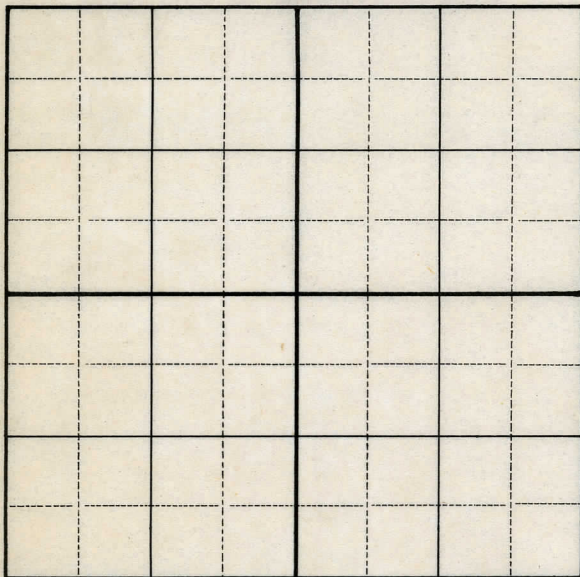
WILDCAT ☐ FIELD ☐ FIELD NAME _____

MAP NO. _____ CO-ORD. _____ ELEV. _____

STATUS _____

Operator's name changed from:
Mid-State Development Company

NORTH

DATE 6-21-48 SCOUT H. J. G.

DATE Feb. 14, 1935

THE PURE OIL COMPANY

LOCATION REPORT

No. 750

STATE Michigan COUNTY Midland

DIST. Greendale
TWP. Greendale
PREC. John Bolen

SEC. 16 TOWN 14 N RANGE 2 W

WELL No. 1 (SERIAL No. 750) FARM _____ ACRES _____

NAME OF STREAM OR WATERS _____ QUADRANGLE NW-SW-NE
NW-SW-NE

OPERATOR Mid-State Development Co. Map Greendale - Midland Co.
Mid-State Development Co. Greendale - Mid Co.

_____ Feet from North Line of Farm

_____ " " East " " "

1005 1005 " " South " " "

330 330 " " West " " "

1635 1635 Feet from North Line of Section

_____ " " East " " "

_____ " " South " " "

330 330 " " West " " $\frac{1}{4}$ $\frac{1}{4}$

LEGEND

○ LOCATION

① RIG

⊕ DRILLING

☼ GAS WELL

● OIL WELL

⦿ SMALL OIL WELL

⦿ DRY HOLE

⦿ DRY SHOWING OIL

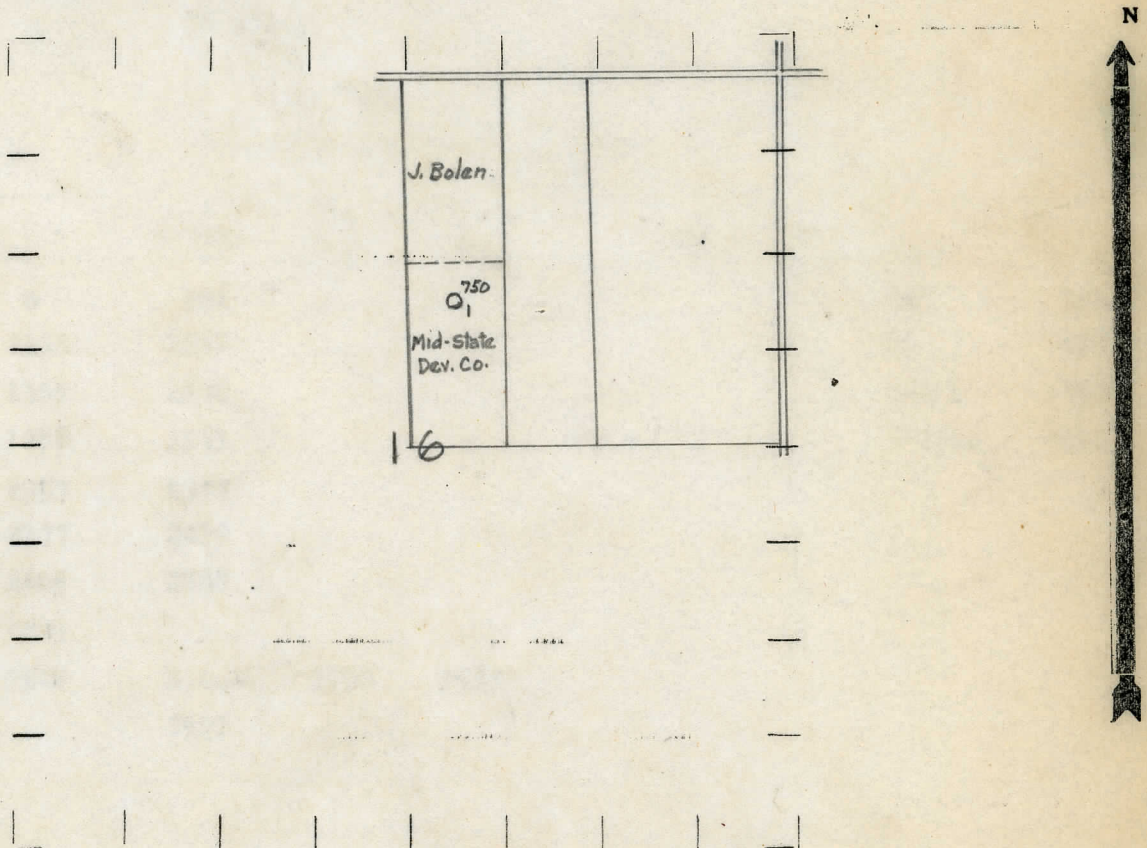
⦿ DRY SHOWING GAS

⦿ ABANDONED LOCATION

☼ ABANDONED GAS WELL

⦿ ABANDONED OIL WELL

NOTE: Below make tracing from map, (when no map is obtainable make sketch) showing farm, center of section, this location with measurements and also wells, dry holes, or other locations in the vicinity of this location.



REMARKS:

SIGNED

R. L. Yager
Superintendent or Foreman.

THE LUBE OIL COMPANY

PRODUCTION RECORD

FORMATION AND CASING RECORD

Remarks Show Oil & Salt Water 1159' - Show Oil & Gas 2904' - Plugged back to 3572'

Signed

J. H. Bell