



Western Michigan University
ScholarWorks at WMU

Legacy Scout Tickets from Pure Oil Company

8-20-2021

MGRRE_PureOilScoutTickets_Breu, E._3_21111023470000

MGRRE

Western Michigan University

Follow this and additional works at: <https://scholarworks.wmich.edu/pure>



Part of the Geology Commons

WMU ScholarWorks Citation

MGRRE, "MGRRE_PureOilScoutTickets_Breu, E._3_21111023470000" (2021). *Legacy Scout Tickets from Pure Oil Company*. 5602.

<https://scholarworks.wmich.edu/pure/5602>

This Document is brought to you for free and open access via ScholarWorks at WMU. It has been accepted for inclusion in Legacy Scout Tickets from Pure Oil Company by an authorized administrator of ScholarWorks at WMU. See the National Digital Catalogue - Science Base Catalogue for more collections submitted by MGRRE.



MGRRE_PureOilScoutTickets_Breu, E._3_21111023470000

API 21111023470000

Permit Number 2347

Lease Name Breu, E.

Well Number 3

County Midland

Township 13N

Range 01W

Section 20

2021 DEQ or Pure co_name McClanahan Oil Company

Pure Number 751

Latitude 43.50169

Longitude -84.45555

THE PURE OIL COMPANY

DATE October 6, 1936

LOCATION REPORT

No. 751STATE Michigan COUNTY MidlandDIST. PorterSEC. 20TOWN 13 NRANGE 1 WWELL No. 33 (SERIAL No. 751) FARMTWP. PorterPREC. Eliza Breu

ACRES

NAME OF STREAM OR WATERS

QUADRANGLE

NE NW SEOPERATOR McClanahan Oil Company

Map

Porter Township, Midland CountyMcClanahan Oil Co.Porter - Mid Co.

Feet from North Line of Farm

" " East " " "

" " South " " "

" " West " " "

330 330

Feet from North Line of Section

" " East " " "

" " South " " "

990 990" " West " 1/4 "

LEGEND

O LOCATION

① RIG

⊕ DRILLING

⊗ GAS WELL

● OIL WELL

⬮ SMALL OIL WELL

⊙ DRY HOLE

⬮ DRY SHOWING OIL

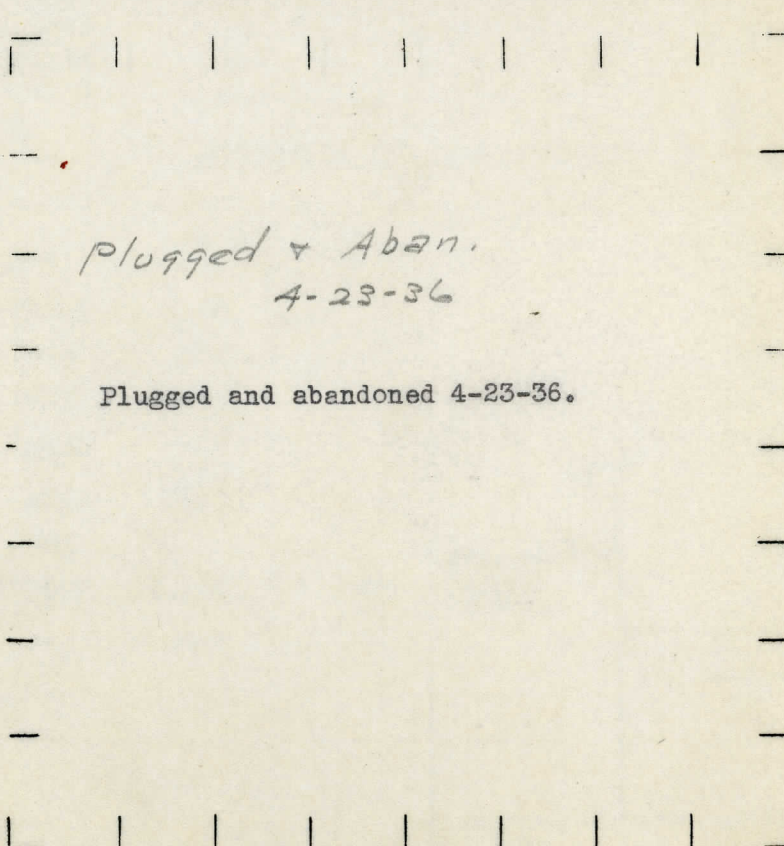
⊙ DRY SHOWING GAS

⊙ ABANDONED LOCATION

⬮ ABANDONED GAS WELL

⬮ ABANDONED OIL WELL

NOTE: Below make tracing from map, (when no map is obtainable make sketch) showing farm, center of section, this location with measurements and also wells, dry holes, or other locations in the vicinity of this location.



REMARKS:

SIGNED

Superintendent or Foreman.

DATE Feb. 14, 1935

LOCATION REPORT

No. 751

STATE Michigan COUNTY Midland DIST. Porter TWP. Porter SEC. 20 TOWN 13N RANGE 1W
WELL No. 3 (SERIAL No. 751) FARM E. Breu ACRES

NAME OF STREAM OR WATERS QUADRANGLE NE-NW-SE, NE-NW-SE

OPERATOR McClanahan Oil Co. Map Porter Midland Co.
McClanahan Oil Co. Porter - Mid Co.

330 330 Feet from North Line of Farm

330 330 " " East " " "

" " South " " "

" " West " " "

330 330 Feet from North Line of Section

" " East " " "

" " South " " "

990 990 " " West " " 1/4 1/4

LEGEND

○ LOCATION

① RIG

⊕ DRILLING

☼ GAS WELL

● OIL WELL

⦿ SMALL OIL WELL

⊙ DRY HOLE

⦿ DRY SHOWING OIL

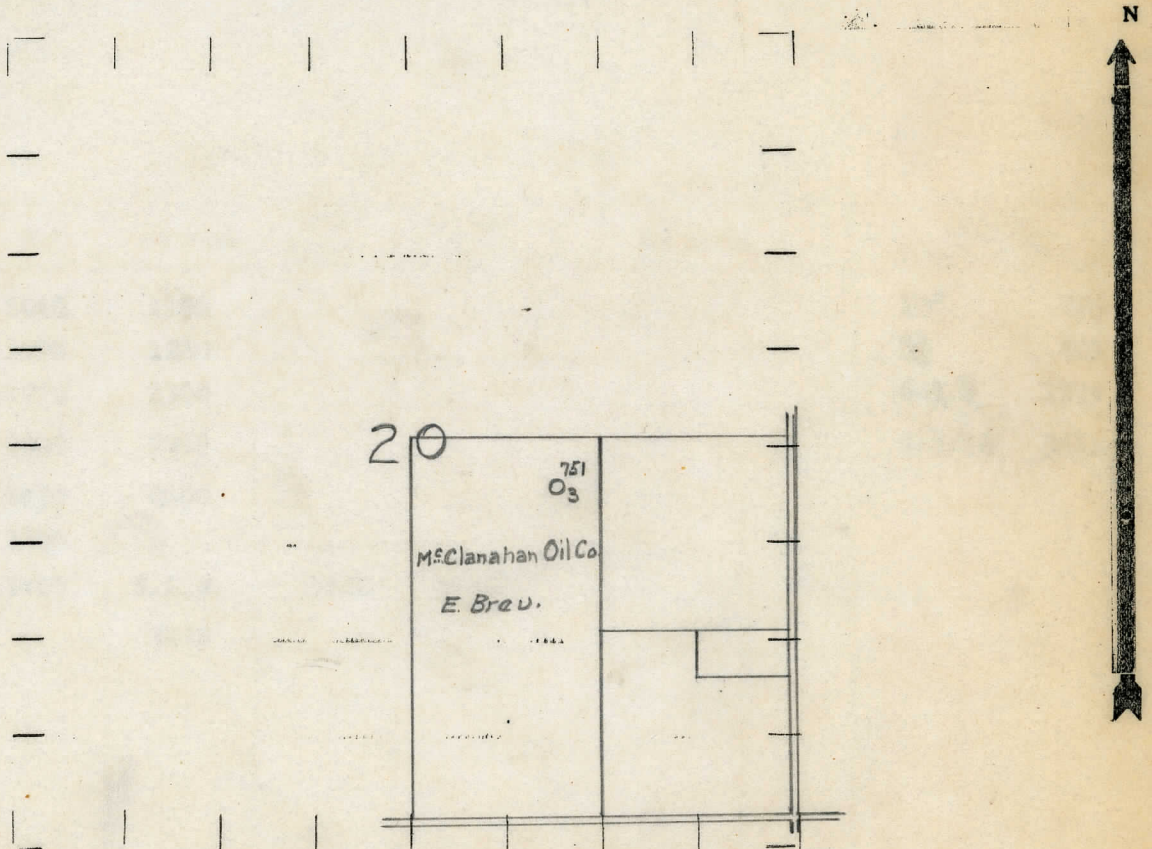
⦿ DRY SHOWING GAS

⦿ ABANDONED LOCATION

☼ ABANDONED GAS WELL

⦿ ABANDONED OIL WELL

NOTE: Below make tracing from map, (when no map is obtainable make sketch) showing farm, center of section, this location with measurements and also wells, dry holes, or other locations in the vicinity of this location.



REMARKS:

SIGNED

R. L. Yeager
Superintendent or Foreman.

J. H. Bell