



Western Michigan University
ScholarWorks at WMU

Legacy Scout Tickets from Pure Oil Company

8-20-2021

MGRRE_PureOilScoutTickets_Bushre, Elic_4_21111023630000

MGRRE

Western Michigan University

Follow this and additional works at: <https://scholarworks.wmich.edu/pure>



Part of the Geology Commons

WMU ScholarWorks Citation

MGRRE, "MGRRE_PureOilScoutTickets_Bushre, Elic_4_21111023630000" (2021). *Legacy Scout Tickets from Pure Oil Company*. 5607.

<https://scholarworks.wmich.edu/pure/5607>

This Document is brought to you for free and open access via ScholarWorks at WMU. It has been accepted for inclusion in Legacy Scout Tickets from Pure Oil Company by an authorized administrator of ScholarWorks at WMU. See the National Digital Catalogue - Science Base Catalogue for more collections submitted by MGRRE.



MGRRE_PureOilScoutTickets_Bushre, Elic_4_21111023630000

API 21111023630000

Permit Number 2363

Lease Name Bushre, Elic

Well Number 4

County Midland

Township 13N

Range 01W

Section 22

2021 DEQ or Pure co_name Smith Petroleum Company

Pure Number 757

Latitude 43.50339

Longitude -84.41076

THE PURE OIL COMPANY

DATE February 15, 1940

LOCATION REPORT

No. 757STATE Michigan COUNTY Midland INST. Porter SEC. 22 TOWN. 13 N RANGE 1 W
WELL No. 4 (SERIAL No. 757) FARM Bushre ACRESNAME OF STREAM OR WATERS _____ QUADRANGLE SE SE NEOPERATOR Smith Petroleum Company Map Porter Township, Midland CountySmith Pet. Co.

Feet from North Line of Farm

" " East " " "

" " South " " "

" " West " " "

Feet from North Line of Section

" " East " " "

" " South " " "

" " West " " "

LEGEND

○ LOCATION

⊙ RIG

⊕ DRILLING

☼ GAS WELL

● OIL WELL

⦿ SMALL OIL WELL

⊖ DRY HOLE

⦿ DRY SHOWING OIL

⊖ DRY SHOWING GAS

⦿ ABANDONED LOCATION

⦿ ABANDONED GAS WELL

⦿ ABANDONED OIL WELL

NOTE: Below make tracing from map, (when no map is obtainable make sketch) showing farm, center of section, this location with measurements and also wells, dry holes, or other locations in the vicinity of this location.

Plugged & Aban.
7-10-39Plugged and abandoned 7-10-39

REMARKS:

SIGNED

Superintendent or Foreman.

DATE 2/28/35

LOCATION REPORT

No. 757

STATE Michigan COUNTY Midland DIST. Porter SEC. 22 TOWN 13N RANGE 1W
WELL No. 4 (SERIAL No. 757) FARM Elic Bushra ACRES

NAME OF STREAM OR WATERS QUADRANGLE SE-SE-NE

OPERATOR Smith Petroleum Company Map Porter Township, Midland County

Smith Petroleum Co.

Porter - Midland

Feet from North Line of Farm

330 330 " " East " " "

330 330 " " South " " "

" " West " " "

Feet from North Line of Section

330 330 " " East " " "

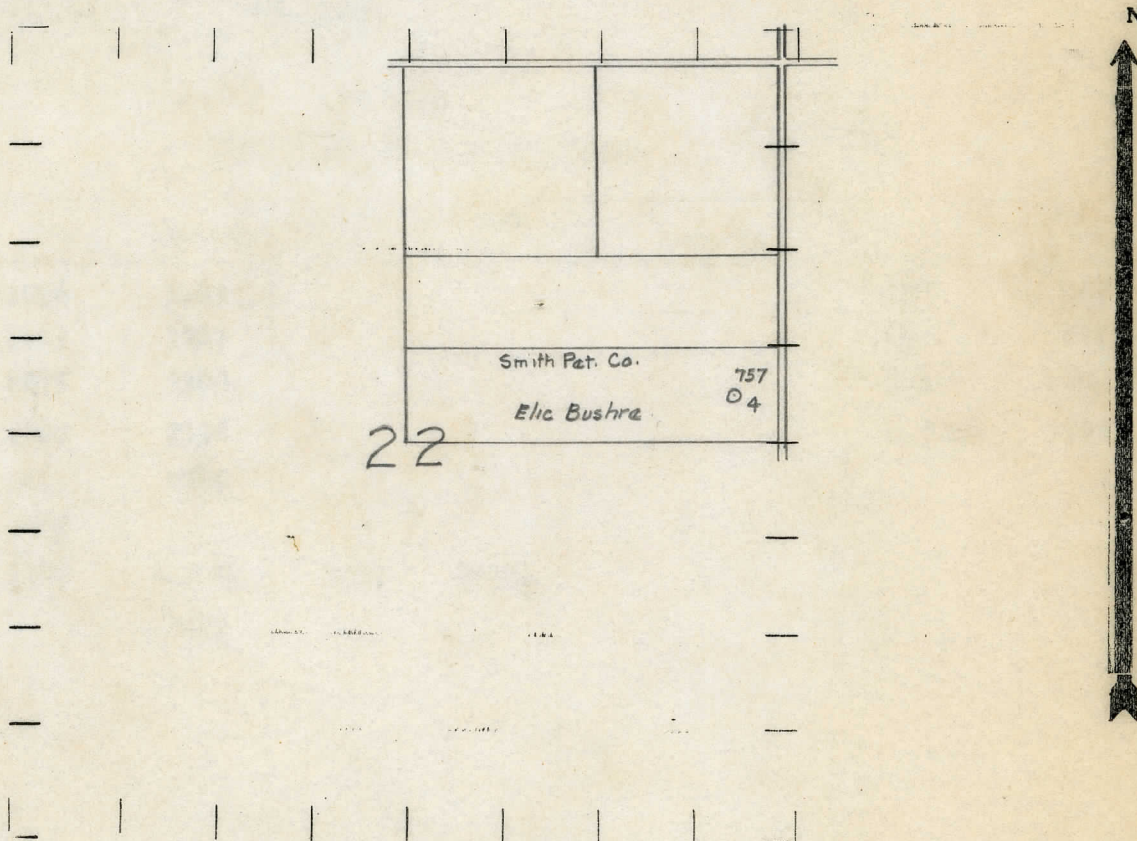
330 330 " " South " " 1 1/4

" " West " " "

LEGEND

- | | |
|------------------|----------------------|
| ○ LOCATION | ⊙ DRY HOLE |
| ⊕ RIG | ⊙ DRY SHOWING OIL |
| ⊕ DRILLING | ⊙ DRY SHOWING GAS |
| ⊙ GAS WELL | ⊙ ABANDONED LOCATION |
| ⊙ OIL WELL | ⊙ ABANDONED GAS WELL |
| ⊙ SMALL OIL WELL | ⊙ ABANDONED OIL WELL |

NOTE: Below make tracing from map, (when no map is obtainable make sketch) showing farm, center of section, this location with measurements and also wells, dry holes, or other locations in the vicinity of this location.



REMARKS:

SIGNED

R. L. Yager
Superintendent or Foreman.

Michigan Producing Division

Date May 2, 1935 No. 757

State Michigan County Midland Dist. Porter
Twp. 22 Sec. 13N Rge. 1W
(Serial No.)
Well No. 4 (County No.) 757 Farm Elio Bushre Acres

Operator Smith Petroleum Company Information secured ^{by} ~~from~~ Scouting Department

Date well started 2/29/35 Date well completed 4/12/35 Elevation 680.8'

PRODUCTION RECORD

1st 24 hours natural Est. 50 bbls.

2nd 24 hours natural

Date of shot	No. of quarts	From	to	From	to
4/15/1954	26				

Date of acid 4/15/35 & 4/26/35 No. of gallons 2000

shot
1st 24 hours after acid 105 bbls.

shot
2nd 24 hours after acid

FORMATION AND CASING RECORD

[illegible]

Remarks

Signed

G. H. Bell