



Western Michigan University
ScholarWorks at WMU

Legacy Scout Tickets from Pure Oil Company

8-20-2021

**MGRRE_PureOilScoutTickets_Carter, Wm. Maywood &
Wife_7_21111024420000**

MGRRE
Western Michigan University

Follow this and additional works at: <https://scholarworks.wmich.edu/pure>



Part of the Geology Commons

WMU ScholarWorks Citation

MGRRE, "MGRRE_PureOilScoutTickets_Carter, Wm. Maywood & Wife_7_21111024420000" (2021). *Legacy Scout Tickets from Pure Oil Company*. 5616.
<https://scholarworks.wmich.edu/pure/5616>

This Document is brought to you for free and open access via ScholarWorks at WMU. It has been accepted for inclusion in Legacy Scout Tickets from Pure Oil Company by an authorized administrator of ScholarWorks at WMU. See the National Digital Catalogue - Science Base Catalogue for more collections submitted by MGRRE.



MGRRE_PureOilScoutTickets_Carter, Wm. Maywood & Wife_7_21111024420000

API 21111024420000

Permit Number 2442

Lease Name Carter, Wm. Maywood & Wife

Well Number 7

County Midland

Township 13N

Range 01W

Section 18

2021 DEQ or Pure co_name Summit Petroleum Corporation

Pure Number 776

Latitude 43.5124037

Longitude -84.4800096

The Pure Oil Company
COMPLETION RECORD THE PURE OIL COMPANY BY OTHER OPERATORS

DATE 4-26-35 LOCATION REPORT No. 776
 STATE Michigan COUNTY Midland DIST. Porter SEC. 18 TOWN 13-N RANGE 1-W
 WELL No. 7 (SERIAL No. 776) FARM Wm. M. Carter ACRES
 NAME OF STREAM OR WATERS QUADRANGLE NE-SE-SW, NE-SE-SW
 OPERATOR Carter Lease, Inc. Map Porter Twp., Midland Co.
Carter Lease Inc. Porter - Midland

Feet from North Line of Farm

330 330 " " East " " "
 990 990 " " South " " "
 990 990 " " West " " "

Feet from North Line of Section

330 330 " " East " " "
 990 990 " " South " " "
 " " West " " "

LEGEND

O LOCATION

① RIG

⊕ DRILLING

☀ GAS WELL

● OIL WELL

⦿ SMALL OIL WELL

⊖ DRY HOLE

⦿ DRY SHOWING OIL

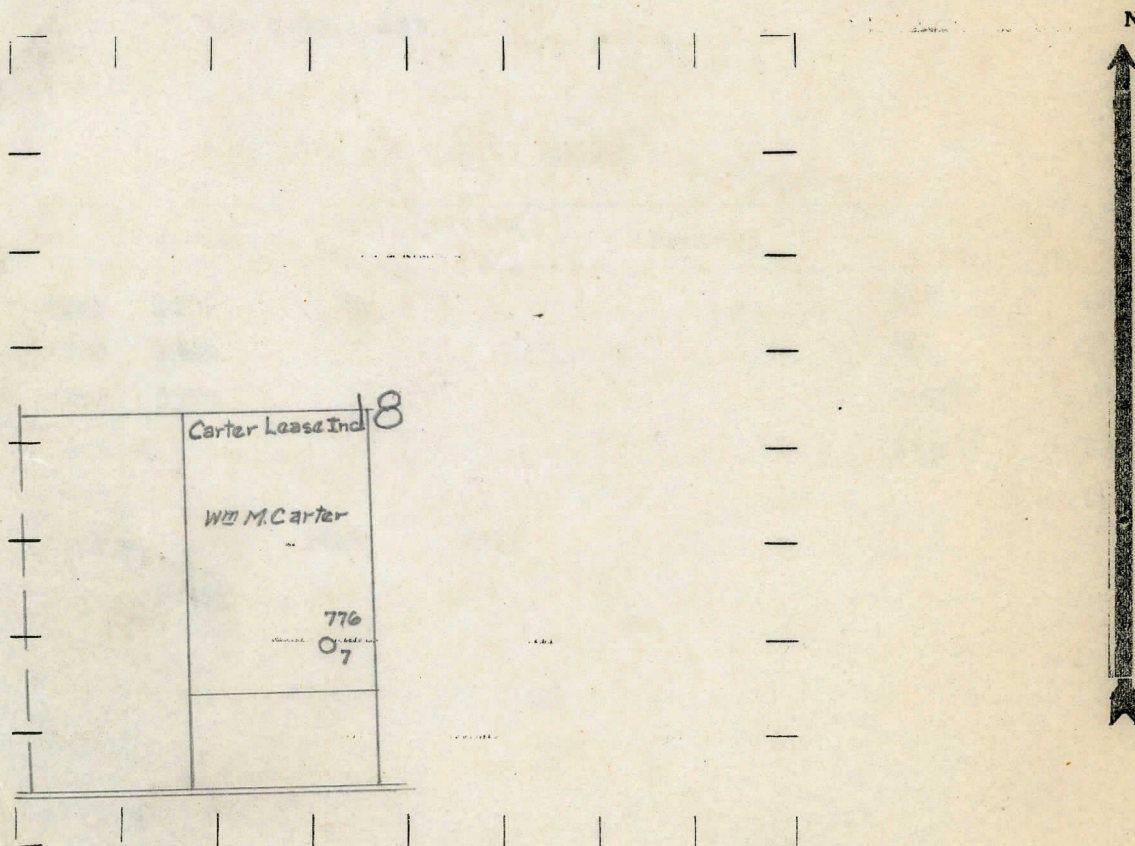
⦿ DRY SHOWING GAS

⦿ ABANDONED LOCATION

⦿ ABANDONED GAS WELL

⦿ ABANDONED OIL WELL

NOTE: Below make tracing from map, (when no map is obtainable make sketch) showing farm, center of section, this location with measurements and also wells, dry holes, or other locations in the vicinity of this location.



REMARKS:

SIGNED

R. L. Yeager
 Superintendent or Foreman.

Signed B. H. Bell