



Western Michigan University
ScholarWorks at WMU

Legacy Scout Tickets from Pure Oil Company

8-20-2021

MGRRE_PureOilScoutTickets_Carter_8_21111026870000

MGRRE

Western Michigan University

Follow this and additional works at: <https://scholarworks.wmich.edu/pure>



Part of the Geology Commons

WMU ScholarWorks Citation

MGRRE, "MGRRE_PureOilScoutTickets_Carter_8_21111026870000" (2021). *Legacy Scout Tickets from Pure Oil Company*. 5627.

<https://scholarworks.wmich.edu/pure/5627>

This Document is brought to you for free and open access via ScholarWorks at WMU. It has been accepted for inclusion in Legacy Scout Tickets from Pure Oil Company by an authorized administrator of ScholarWorks at WMU. See the National Digital Catalogue - Science Base Catalogue for more collections submitted by MGRRE.



MGRRE_PureOilScoutTickets_Carter_8_21111026870000

API 21111026870000

Permit Number 2687

Lease Name Carter

Well Number 8

County Midland

Township 13N

Range 01W

Section 18

2021 DEQ or Pure co_name Carter Lease, Incorporated

Pure Number 806

Latitude 43.51255

Longitude -84.4827

DATE February 20, 1941

LOCATION REPORT

No. 806

DATE 8-15-35

LOCATION REPORT

STATE Michigan COUNTY Midland DIST. Porter SEC. 18 TOWN 13N RANGE 1W
WELL No. 8 (SERIAL No. 806) FARM Wm. Maywood Carter & Wife ACRES
NAME OF STREAM OR WATERS QUADRANGLE NW SE SW
OPERATOR Carter Lease Inc., Map Porter Township, Midland County

Feet from North Line of Farm

" " East " " "

" " South " " "

" " West " " "

Feet from North Line of Section

" " East " " "

" " South " " "

" " West " " "

LEGEND

○ LOCATION

① RIG

⊕ DRILLING

☼ GAS WELL

● OIL WELL

⬮ SMALL OIL WELL

⊙ DRY HOLE

⬮ DRY SHOWING OIL

⊙ DRY SHOWING GAS

⊙ ABANDONED LOCATION

☼ ABANDONED GAS WELL

⬮ ABANDONED OIL WELL

NOTE: Below make tracing from map. (when no map is obtainable make sketch) showing farm, center of section, this location with measurements and also wells, dry holes, or other locations in the vicinity of this location.

Plugged and abandoned 11-13-40.

Total Depth 3434'.

N

REMARKS:

SIGNED

Subintendent or Foreman.

NAME OF STREAM OR WATERS

QUADRANGLE NW SE SW

WELL NO. 8 (SERIAL NO. 806) FARM

DATE February 20, 1941

STATE Michigan COUNTY Midland

Wm. Maywood Carter & Wife

DIST. Porter

SEC. 18

TOWN 13-N

RANGE 1-W

STATE Michigan COUNTY Midland DIST. Porter TWP. Porter SEC. 18 TOWN 13-N RANGE 1-W

WELL No. 8 (SERIAL No. 806) FARM Wm. Maywood Carter & Wife ACRES

NAME OF STREAM OR WATERS

QUADRANGLE NW-SE-SW

OPERATOR Carter Lease Inc.,

Map Porter Twp., Midland Co.

Feet from North Line of Farm

" " East " " "

350 " " South " " "

360 " " West " " "

Feet from North Line of Section

960 " " East " " "

1010 " " South " " "

" " West " " "

LEGEND

O LOCATION

① RIG

⊕ DRILLING

☀ GAS WELL

● OIL WELL

◆ SMALL OIL WELL

⊖ DRY HOLE

◆ DRY SHOWING OIL

⊖ DRY SHOWING GAS

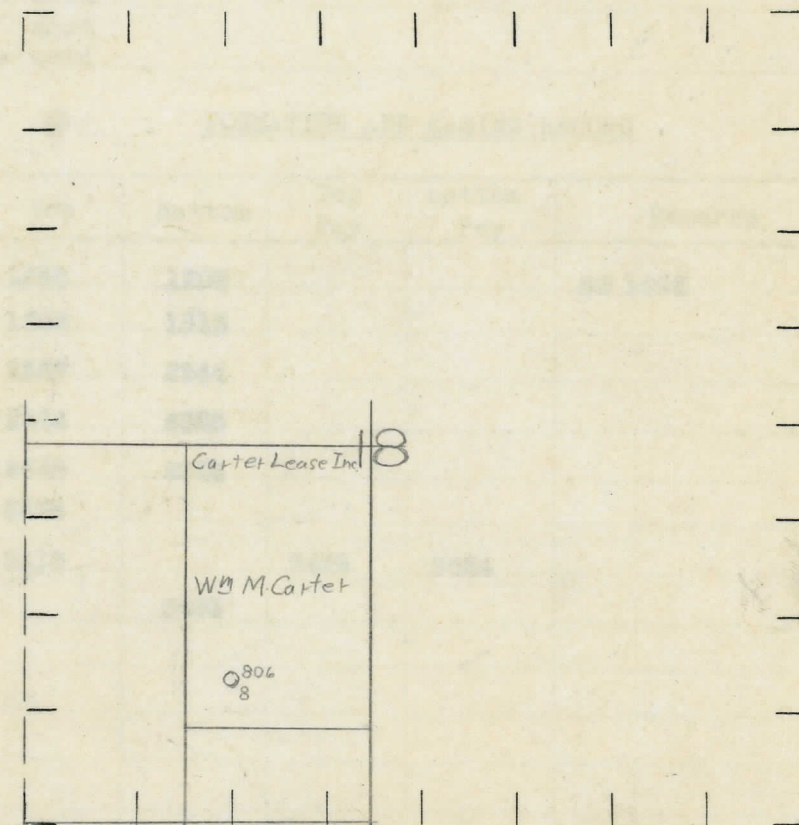
⊖ ABANDONED LOCATION

☀ ABANDONED GAS WELL

◆ ABANDONED OIL WELL

NOTE: Below make tracing from map, (when no map is obtainable make sketch) showing farm, center of section, this location with measurements and also wells, dry holes, or other locations in the vicinity of this location.

11-13-40



REMARKS:

SIGNED

R. A. Yeager

Superintendent or Foreman.

Per # 2687

Michigan Producing Division

PRODUCTION RECORD

FORMATION AND CASING RECORD

Remarks

Signed J. H. Bell