



Western Michigan University
ScholarWorks at WMU

Legacy Scout Tickets from Pure Oil Company

8-20-2021

MGRRE_PureOilScoutTickets_Bond, Robert and Federal Land Bank_1_na

MGRRE
Western Michigan University

Follow this and additional works at: <https://scholarworks.wmich.edu/pure>



Part of the Geology Commons

WMU ScholarWorks Citation

MGRRE, "MGRRE_PureOilScoutTickets_Bond, Robert and Federal Land Bank_1_na" (2021). *Legacy Scout Tickets from Pure Oil Company*. 5657.
<https://scholarworks.wmich.edu/pure/5657>

This Document is brought to you for free and open access via ScholarWorks at WMU. It has been accepted for inclusion in Legacy Scout Tickets from Pure Oil Company by an authorized administrator of ScholarWorks at WMU. See the National Digital Catalogue - Science Base Catalogue for more collections submitted by MGRRE.



MGRRE_PureOilScoutTickets_Bond, Robert and Federal Land Bank_1_na

API na

Permit Number na

Lease Name Bond, Robert and Federal Land Bank

Well Number 1

County Midland

Township 15N

Range 02W

Section 20

2021 DEQ or Pure co_name Bond Oil Dev Co

Pure Number 906

Latitude 43.6770162

Longitude -84.5780072

DATE June 4, 1936

LOCATION REPORT

No. 906

STATE Michigan COUNTY Midland DIST. Geneva SEC. 20 TOWN 15 N RANGE 24
 WELL No. 1 (SERIAL No. 906) FARM Robert Bond & Federal Land Bank ACRES 34

NAME OF STREAM OR WATERS _____ QUADRANGLE SW SW NE

OPERATOR Bond Oil Development Company Map Geneva Township, Midland County
Bond Oil Dev Co. Geneva-Midland

Feet from North Line of Farm

" " East " " "

330 330 " " South " " "330 330 " " West " " "

Feet from North Line of Section

" " East " " "

330 330 " " South " 1/4 "330 330 " " West " 1/4 "

LEGEND

○ LOCATION

① RIG

⊕ DRILLING

☀ GAS WELL

● OIL WELL

⬮ SMALL OIL WELL

⊙ DRY HOLE

⬮ DRY SHOWING OIL

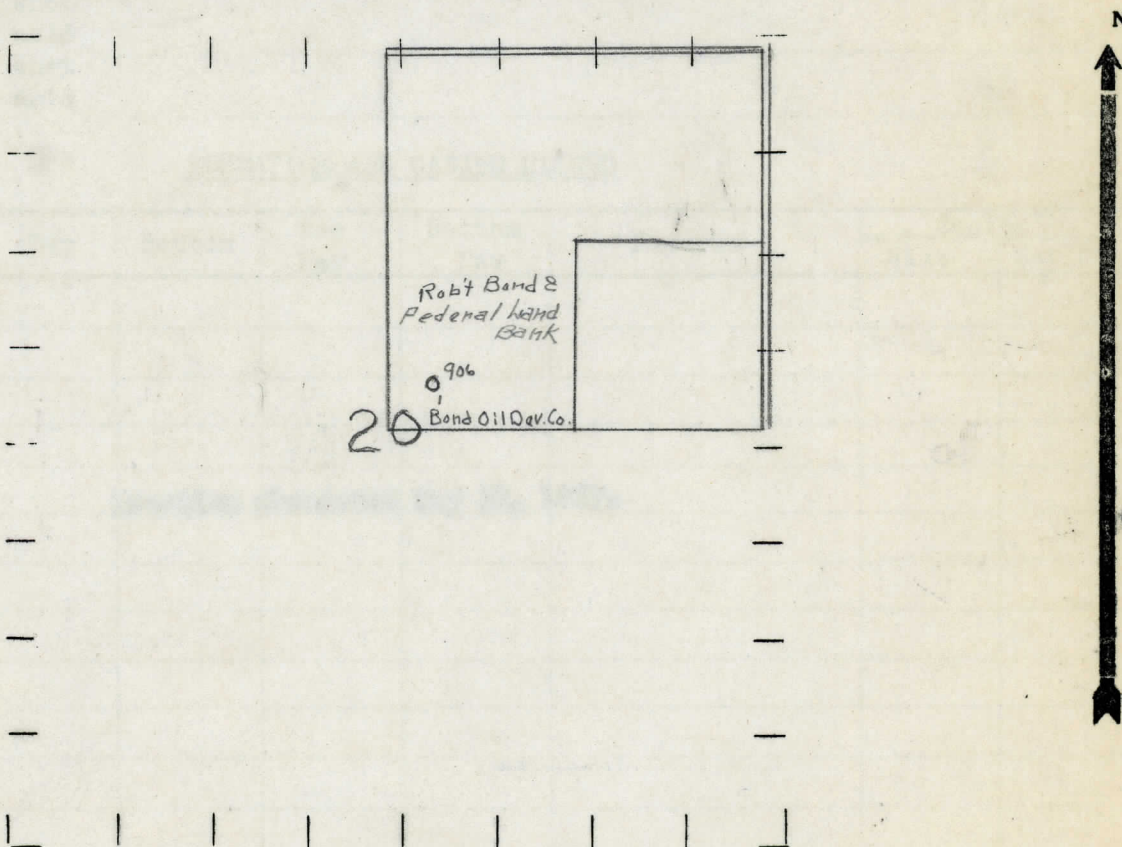
⊙ DRY SHOWING GAS

⊙ ABANDONED LOCATION

☀ ABANDONED GAS WELL

⬮ ABANDONED OIL WELL

NOTE: Below make tracing from map, (when no map is obtainable make sketch) showing farm, center of section, this location with measurements and also wells, dry holes, or other locations in the vicinity of this location.



REMARKS:

SIGNED

R. L. Yeager
 Superintendent or Foreman.

