



Western Michigan University  
ScholarWorks at WMU

---

Legacy Scout Tickets from Pure Oil Company

---

8-20-2021

**MGRRE\_PureOilScoutTickets\_Campbell\_9\_21111033380000**

MGRRE

*Western Michigan University*

Follow this and additional works at: <https://scholarworks.wmich.edu/pure>



Part of the Geology Commons

---

#### WMU ScholarWorks Citation

MGRRE, "MGRRE\_PureOilScoutTickets\_Campbell\_9\_21111033380000" (2021). *Legacy Scout Tickets from Pure Oil Company*. 5660.

<https://scholarworks.wmich.edu/pure/5660>

This Document is brought to you for free and open access via ScholarWorks at WMU. It has been accepted for inclusion in Legacy Scout Tickets from Pure Oil Company by an authorized administrator of ScholarWorks at WMU. See the National Digital Catalogue - Science Base Catalogue for more collections submitted by MGRRE.



---

## MGRRE\_PureOilScoutTickets\_Campbell\_9\_21111033380000

API 21111033380000

Permit Number 3338

Lease Name Campbell

Well Number 9

County Midland

Township 13N

Range 01W

Section 17

2021 DEQ or Pure co\_name Roosevelt Oil Company

Pure Number 911

Latitude 43.52304

Longitude -84.45867

DATE February 20, 1941

LOCATION REPORT

No. 911

DATE June 18, 1936

LOCATION REPORT

STATE Michigan COUNTY Midland DIST. Porter SEC. 17 TOWN 13N RANGE 1W  
WELL No. 9 (SERIAL No. 911) FARM J. W. Campbell ACRES

NAME OF STREAM OR WATERS QUADRANGLE NW NW NE

OPERATOR Roosevelt Oil Corporation Map Porter Township, Midland County

Feet from North Line of Farm

" " East " " "

" " South " " "

" " West " " "

Feet from North Line of Section

" " East " " "

" " South " " "

" " West " " "

LEGEND

○ LOCATION

① RIG

⊕ DRILLING

☼ GAS WELL

● OIL WELL

♣ SMALL OIL WELL

⊙ DRY HOLE

◆ DRY SHOWING OIL

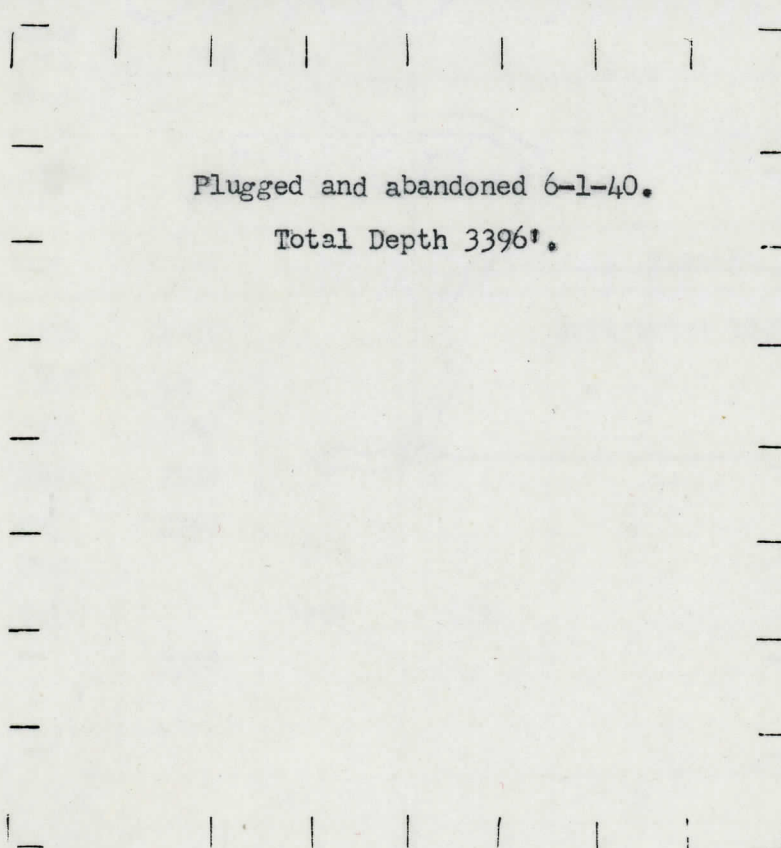
⊙ DRY SHOWING GAS

⊙ ABANDONED LOCATION

☼ ABANDONED GAS WELL

♣ ABANDONED OIL WELL

NOTE: Below make tracing from map, (when no map is obtainable make sketch) showing farm, center of section, this location with measurements and also wells, dry holes, or other locations in the vicinity of this location.



REMARKS:

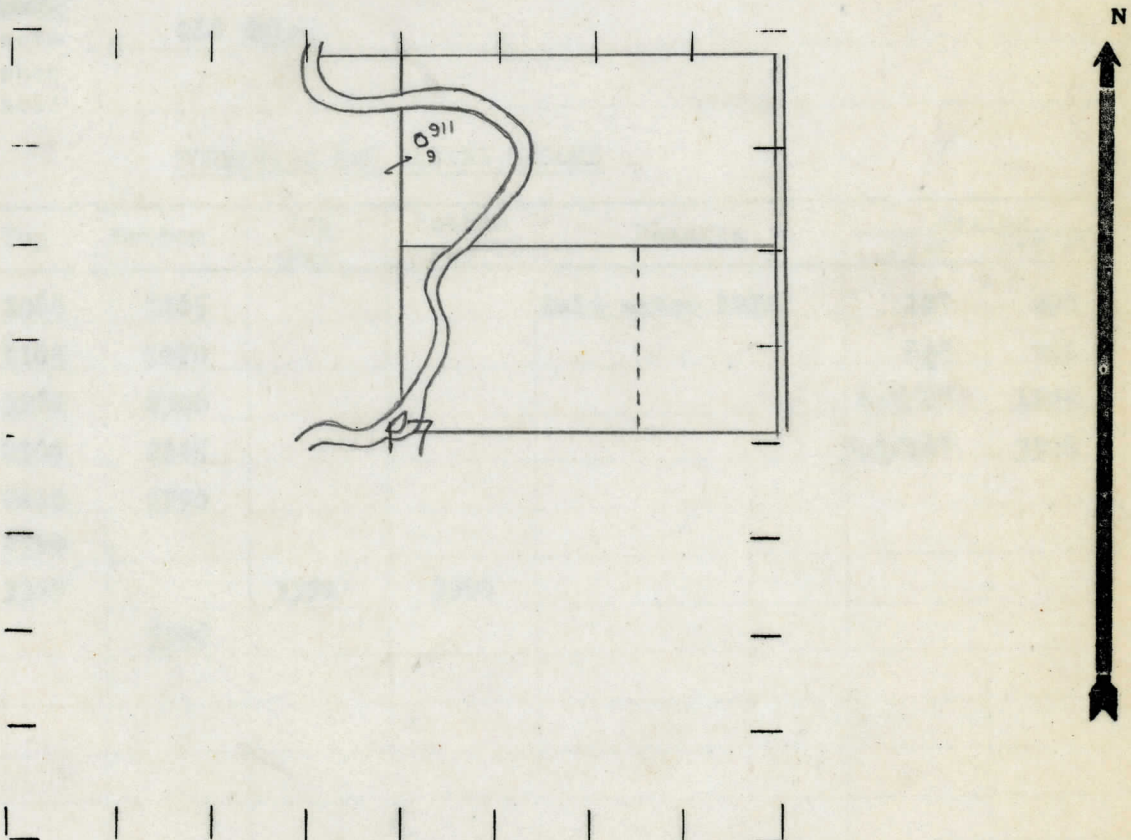
SIGNED

Superintendent or Foreman.

NAME OF ALLEYS OR WATERS  
WELL No. 99 (SERIAL No. 991) FARM  
STATE Michigan COUNTY Midland DIST. Porter TWP. Porter SEC. 17 TOWN 13 N RANGE 1 W  
WELL No. 99 (SERIAL No. 991) FARM  
NAME OF STREAM OR WATERS  
QUADRANGLE NW-NW-NE  
NW NW NE

OPERATOR Roosevelt Oil Corporation  
Roosevelt Oil Co.  
210 210 Feet from North Line of Farm  
525 525 " " East " " "  
" " South " " "  
" " West " " "  
530 530 Feet from North Line of Section  
" " East " " "  
" " South " " "  
130 130 " " West " 1/4 "  
Map Porter Township, Midland County  
Porter-Midland  
Dry 495-10" 40V  
LEGEND  
O LOCATION  
⊕ RIG  
⊕ DRILLING  
☀ GAS WELL  
● OIL WELL  
⬮ SMALL OIL WELL  
⊙ DRY HOLE  
⬮ DRY SHOWING OIL  
⊙ DRY SHOWING GAS  
⬮ ABANDONED LOCATION  
☀ ABANDONED GAS WELL  
⬮ ABANDONED OIL WELL

NOTE: Below make tracing from map, (when no map is obtainable make sketch) showing farm, center of section, this location with measurements and also wells, dry holes, or other locations in the vicinity of this location.



REMARKS:

SIGNED

R. L. Yeager

Superintendent or Foreman.

Date July 30, 1936 No. 911  
State Michigan County Midland Dist. \_\_\_\_\_  
Twp. Porter Sec. 17 Twp. 13 N Rge. 1 W  
Well No. 9 (Serial No.) \_\_\_\_\_  
(County No.) 911 Farm J. W. Campbell Acres \_\_\_\_\_  
Operator Roosevelt Oil Company by \_\_\_\_\_  
Information secured from Scouting Dept.  
Date well started 6-12-36 Date well completed 7-21-36 Elevation 663.8

18  
1st ~~12~~ 14 hours natural Filled up 1000'

2nd 24 hours natural

Date of shot	No. of quarts	From	to	From	to
--------------	------------------	------	----	------	----

Date of acid 7-25-36 No. of gallons 500

~~250000~~ 268 Bbls.  
1st 24 hours after acid

shot

2nd 24 hours after acid

[illegible]

Remarks

Signed

G. H. Bell