



Western Michigan University  
ScholarWorks at WMU

---

Legacy Scout Tickets from Pure Oil Company

---

8-20-2021

## MGRRE\_PureOilScoutTickets\_Andrews, H. L.\_1\_na

MGRRE

*Western Michigan University*

Follow this and additional works at: <https://scholarworks.wmich.edu/pure>



Part of the Geology Commons

---

### WMU ScholarWorks Citation

MGRRE, "MGRRE\_PureOilScoutTickets\_Andrews, H. L.\_1\_na" (2021). *Legacy Scout Tickets from Pure Oil Company*. 5695.

<https://scholarworks.wmich.edu/pure/5695>

This Document is brought to you for free and open access via ScholarWorks at WMU. It has been accepted for inclusion in Legacy Scout Tickets from Pure Oil Company by an authorized administrator of ScholarWorks at WMU. See the National Digital Catalogue - Science Base Catalogue for more collections submitted by MGRRE.



---

## MGRRE\_PureOilScoutTickets\_Andrews, H. L.\_1\_na

API na

Permit Number na

Lease Name Andrews, H. L.

Well Number 1

County Midland

Township 16N

Range 02W

Section 27

2021 DEQ or Pure co\_name F. M. Brown, Trustee

Pure Number 1000

Latitude 43.7493833

Longitude -84.536889

The Pure Oil Company  
THE PURE OIL COMPANY

COMPLETION RECORD OF WELLS DRILLED BY OTHER OPERATORS

DATE October 7, 1937

## LOCATION REPORT

No. 2 1000STATE Michigan

COUNTY

Midland

DIST.

Warren

TWP.

Warren

SEC.

27

TOWN

16 N

RANGE

2 WWELL No. 1(SERIAL No. 1000)

FARM

H. L. Andrews

ACRES

NAME OF STREAM OR WATERS

QUADRANGLE

NE NE NW

OPERATOR

F. M. Brown, Trustee

Map

Warren Township, Midland County3330

Feet from North Line of Farm

37370

" " East " " "

" " South " " "

" " West " " "

3330

Feet from North Line of Section

37370" " East " 1/4 "

" " South " " "

" " West " " "

## LEGEND

O LOCATION

① RIG

⊕ DRILLING

☀ GAS WELL

● OIL WELL

● SMALL OIL WELL

⊙ DRY HOLE

⊙ DRY SHOWING OIL

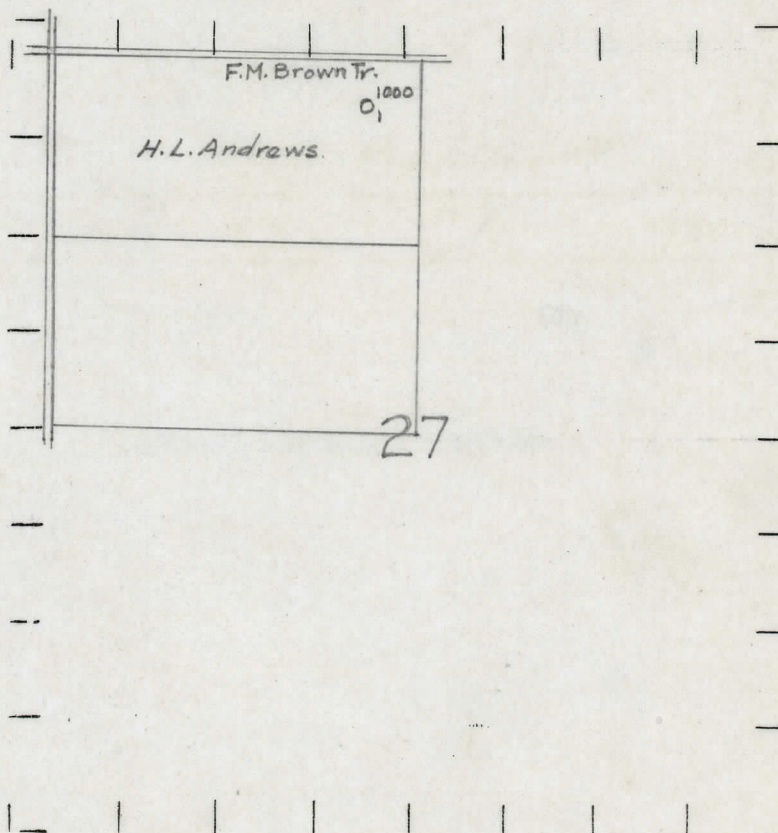
⊙ DRY SHOWING GAS

⊙ ABANDONED LOCATION

⊙ ABANDONED GAS WELL

⊙ ABANDONED OIL WELL

NOTE: Below make tracing from map, (when no map is obtainable make sketch) showing farm, center of section, this location with measurements and also wells, dry holes, or other locations in the vicinity of this location.



REMARKS:

SIGNED

R. L. Yeager  
 Superintendent or Foreman.



