



Western Michigan University
ScholarWorks at WMU

Legacy Scout Tickets from Pure Oil Company

8-20-2021

MGRRE_PureOilScoutTickets_Central Michigan Land & Royalty_3_21111042190000

MGRRE
Western Michigan University

Follow this and additional works at: <https://scholarworks.wmich.edu/pure>



Part of the Geology Commons

WMU ScholarWorks Citation

MGRRE, "MGRRE_PureOilScoutTickets_Central Michigan Land & Royalty_3_21111042190000" (2021).
Legacy Scout Tickets from Pure Oil Company. 5701.
<https://scholarworks.wmich.edu/pure/5701>

This Document is brought to you for free and open access via ScholarWorks at WMU. It has been accepted for inclusion in Legacy Scout Tickets from Pure Oil Company by an authorized administrator of ScholarWorks at WMU. See the National Digital Catalogue - Science Base Catalogue for more collections submitted by MGRRE.



**MGRRE_PureOilScoutTickets_Central Michigan Land &
Royalty_3_21111042190000**

API 21111042190000

Permit Number 4219

Lease Name Central Michigan Land & Royalty

Well Number 3

County Midland

Township 16N

Range 02W

Section 24

2021 DEQ or Pure co_name Wicklund, J. V. Development Company

Pure Number 1008

Latitude 43.76247

Longitude -84.49293

THE PURE OIL COMPANY
COMPLETION RECORD OF WELLS DRILLED BY OTHER OPERATORS

DATE January 20, 1938

LOCATION REPORT

No. 1008

STATE Michigan COUNTY Midland DIST. Warren SEC. 24 TOWN 16 N RANGE 2 W
WELL No. 13 (SERIAL No. 1008) FARM Central Michigan Land & Royalty Co. ACRES

NAME OF STREAM OR WATERS _____ QUADRANGLE NE-NW-SE

OPERATOR J. V. Wicklund Development Company Map Warren Township, Midland County

330330 Feet from North Line of Farm

330330 " " East " " "

" " South " " "

" " West " " "

330330 Feet from North Line of Section 1/4

" " East " " "

" " South " " "

990990 " " West " 1/4 "

○ LOCATION

⊕ RIG

⊕ DRILLING

☼ GAS WELL

● OIL WELL

◆ SMALL OIL WELL

LEGEND

⊙ DRY HOLE

◆ DRY SHOWING OIL

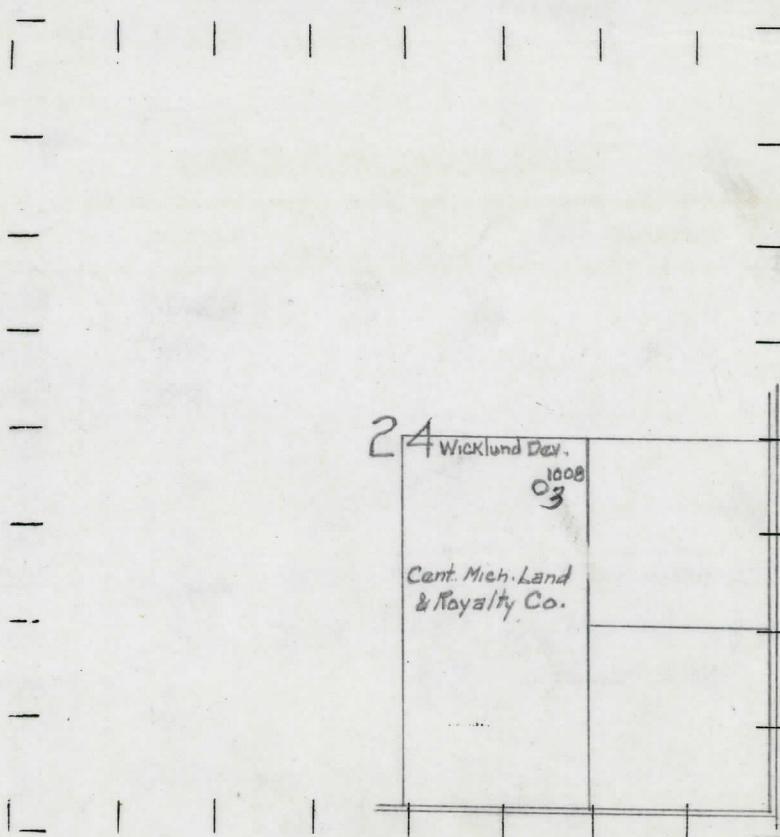
⊙ DRY SHOWING GAS

⊙ ABANDONED LOCATION

☼ ABANDONED GAS WELL

◆ ABANDONED OIL WELL

NOTE: Below make tracing from map, (when no map is obtainable make sketch) showing farm, center of section, this location with measurements and also wells, dry holes, or other locations in the vicinity of this location.



REMARKS:

SIGNED

R. L. Yeager
Superintendent or Foreman.

Michigan Producing Division

Date **April 21, 1938** No. **1008**
 State **Mich.** County **Midland** Twp. **Warren** Sec. **24** Twp. **16 N** Rge. **2 W**
 Well No. **3** (Serial No.) **1008** Farm **Central Michigan Land & Royalty Co.** Acres
 Operator **J. V. Wicklund Development Co.** Information secured **from** **Scouting Department**
 Date well started **1-31-38** Date well completed **4-6-38** Elevation **705.5**

PRODUCTION RECORD

1st 24 hours natural **Dry Hole**
 2nd 24 hours natural
 Date of shot No. of quarts From to From to
 Date of acid No. of gallons
 1st 24 hours after acid shot
 2nd 24 hours after acid shot

FORMATION AND CASING RECORD

Formation	Top	Bottom	Top Pay	Bottom Pay	Remarks	Casing	
						Size	Set at
Marshall	1348	S.L.M.				10"	286
Red Rock	1438	1537				8-1/4"	1029
Sunbury	2535	2558				6-5/8"	1568
Berea	2558					5-3/16"	3915
Antrim	2640	3128					
Traverse Form.	3128						
Traverse Line	3128	S.L.M.	3455	3466	Small show oil		
Dundee	3813	"	3852	3872	Show oil and gas (S.L.M.)		
Monroe	4076 ?			4607	Black water		
Total Depth		4607					
Plugged Back:		3877					

Remarks **Salt water at 3887' - filled up 200 ft., show oil 3963'-3964'.**

Signed **D. C. Shackelford**