



Western Michigan University
ScholarWorks at WMU

Legacy Scout Tickets from Pure Oil Company

8-20-2021

**MGRRE_PureOilScoutTickets_Adams, John
Q._1_21111059470000**

MGRRE
Western Michigan University

Follow this and additional works at: <https://scholarworks.wmich.edu/pure>



Part of the Geology Commons

WMU ScholarWorks Citation

MGRRE, "MGRRE_PureOilScoutTickets_Adams, John Q._1_21111059470000" (2021). *Legacy Scout Tickets from Pure Oil Company*. 5768.
<https://scholarworks.wmich.edu/pure/5768>

This Document is brought to you for free and open access via ScholarWorks at WMU. It has been accepted for inclusion in Legacy Scout Tickets from Pure Oil Company by an authorized administrator of ScholarWorks at WMU. See the National Digital Catalogue - Science Base Catalogue for more collections submitted by MGRRE.



MGRRE_PureOilScoutTickets_Adams, John Q._1_21111059470000

API 21111059470000

Permit Number 5947

Lease Name Adams, John Q.

Well Number 1

County Midland

Township 16N

Range 01E

Section 16

2021 DEQ or Pure co_name Oryx Energy Company

Pure Number 1079

Latitude 43.79491

Longitude -84.36194

The Pure Oil Company
THE PURE OIL COMPANY

DATE March 23, 1939

LOCATION REPORT

No. 1079

STATE Michigan COUNTY Midland DIST. Hope TWP. Hope SEC. 16 TOWN 16 N RANGE 1 E

WELL No. 1 (SERIAL No. 1079) FARM J. Q. Adams ACRES

NAME OF STREAM OR WATERS QUADRANGLE SW 1/4 SE NW

OPERATOR Sun Oil Company Map Hope Township, Midland County

Sun Oil Co
Feet from North Line of Farm

660 660 " " East " " "
330 330 " " South " " "
" " West " " "

Feet from North Line of Section

990 990 " " East " " $\frac{1}{4}$
660 660 " " South " " $\frac{1}{4}$
" " West " " "

LEGEND

○ LOCATION

① RIG

⊕ DRILLING

☀ GAS WELL

● OIL WELL

⬮ SMALL OIL WELL

⬮ DRY HOLE

⬮ DRY SHOWING OIL

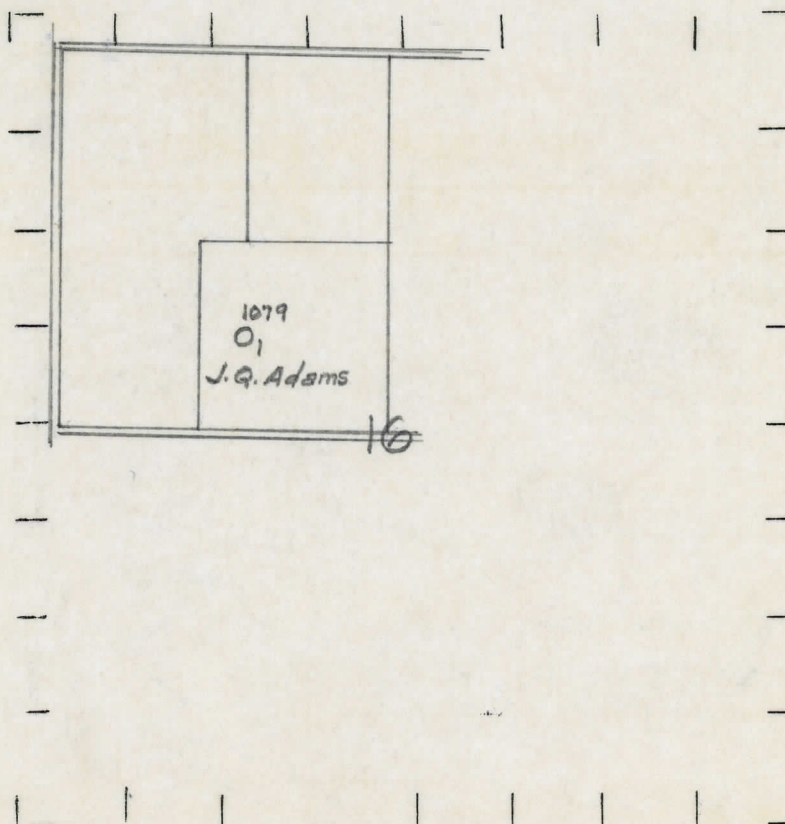
⬮ DRY SHOWING GAS

⬮ ABANDONED LOCATION

⬮ ABANDONED GAS WELL

⬮ ABANDONED OIL WELL

NOTE: Below make tracing from map, (when no map is obtainable make sketch) showing farm, center of section, this location with measurements and also wells, dry holes, or other locations in the vicinity of this location.



REMARKS:

SIGNED

R. J. Y.

Superintendent or Foreman.

