



Western Michigan University
ScholarWorks at WMU

Legacy Scout Tickets from Pure Oil Company

8-20-2021

MGRRE_PureOilScoutTickets_Joynt_1_21111110460000

MGRRE

Western Michigan University

Follow this and additional works at: <https://scholarworks.wmich.edu/pure>



Part of the Geology Commons

WMU ScholarWorks Citation

MGRRE, "MGRRE_PureOilScoutTickets_Joynt_1_21111110460000" (2021). *Legacy Scout Tickets from Pure Oil Company*. 5808.

<https://scholarworks.wmich.edu/pure/5808>

This Document is brought to you for free and open access via ScholarWorks at WMU. It has been accepted for inclusion in Legacy Scout Tickets from Pure Oil Company by an authorized administrator of ScholarWorks at WMU. See the National Digital Catalogue - Science Base Catalogue for more collections submitted by MGRRE.



MGRRE_PureOilScoutTickets_Joynt_1_21111110460000

API 21111110460000

Permit Number 11046

Lease Name Joynt

Well Number 1

County Midland

Township 16N

Range 01E

Section 36

2021 DEQ or Pure co_name Rowmor Corporation

Pure Number 1142

Latitude 43.75541

Longitude -84.29011

THE PURE OIL COMPANY LOCATION REPORT



Date March 7, 1945 A.F.E. No. _____

Division Mich. Producing District _____ Lease Joynt

Acres _____ Lease No. _____ Elevation _____ Well No. 1 (Serial No. 1142)

Quadrangle NE NE NE Sec. 36 Twp. 16 N Rge. 1 E Twp. Hope

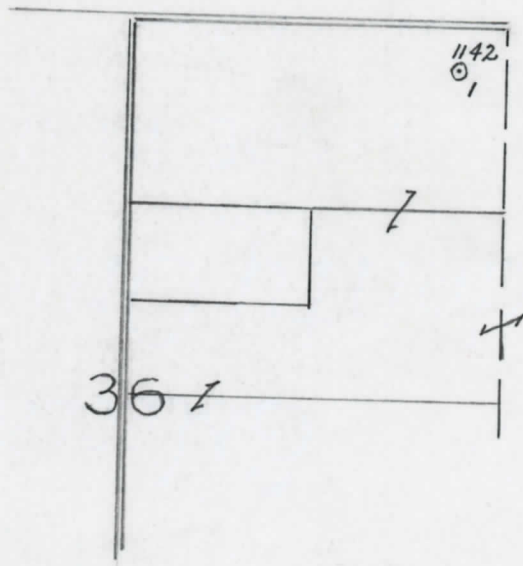
Survey _____ County Midland State Michigan

Operator Rowner Corp. Map Hope Sup Midland Co Hope Township, Midland County

<u>330</u>	<u>330</u>	Feet from North Line of Lease
<u>330</u>	<u>330</u>	" " East " " "
		" " South " " "
		" " West " " "
<u>330</u>	<u>330</u>	Feet from North Line of Section
<u>330</u>	<u>330</u>	" " East " " "
		" " South " " "
		" " West " " "

LEGEND

- Location
- ☀ Gas Well
- Oil Well
- ☀ Gas - Distillate Well
- ∅ or ○ Dry Hole
- Dry Showing Oil
- ☀ Dry Showing Gas
- ⊗ Abandoned Location
- ☀ or ☀ Abandoned Gas Well
- or ● Abandoned Oil Well
- or ○ Input Well



Remarks: _____

Scale _____

Submitted by _____ Civil Engineer Approved by _____ Division Manager

Approved by _____ Vice-President - General Manager

The Pure Oil Company
COMPLETION RECORD OF WELLS DRILLED BY OTHER OPERATORS

Michigan Producing Division

Date April 25, 1945 No. 1142
State Mich. County Midland ~~xxxxx~~ Twp. Hope Sec. 36 Twp. 16 N Rge. 1 E
(Serial No.)
Well No. 1 (~~xxxxxxx~~) 1142 Farm Joynt Acres
Operator Rouner Corp. Information secured ~~xxxx~~ By Scouting Department
Date well started 3-6-45 Date well completed 4-21-45 Elevation 684.5

PRODUCTION BOARD

1st 24 hours natural Dry Hole
2nd 24 hours natural
Date of shot No. of quarts From To From to
Date of acid No. of gallons
shot
1st 24 hours after acid shot
2nd 24 hours after acid shot

FORMATION AND CASING RECORD

Formation	Top	Bottom	Top Pay	Bottom Pay	Remarks	Casing	
						Size	Set at
Brown Dolomite	1065	1085	(-380)		Show S.W. 1238. (-553)	10"	305
Marshall	1234	(-549)			H.F.S.W. 1253-1296.	8-1/4"	954
Coldw. Red Rock	2419	2427	(-1734)		(-568)	6-5/8"	1420
Sunbury	2448	SLM.	(-1763)			5-3/16" RH	3791
Berea	2469	"	(-1784)				
Antrim	2601	3018	(-1916)				
Traverse Lime (Squaw Bay)	3039	3075	(-2251)				
Trav.-Alpena	3131	(-2446)					
Dundee	3754	SLM.	(-3069)		2000 ft. S.W. 3975-3982. (-3290)		
Detroit River (Dolomite)	4000	(-3315)			Very small show oil 4000-4011. (-3315)		
					H.F.S.W. 4011-4018. (-3326)		
Total Depth		4059	(-3374)				

Remarks 3005' equals 3007' SLM; 3761' equals 3766' SLM.

Signed D. C. Shackelford