



Western Michigan University
ScholarWorks at WMU

Legacy Scout Tickets from Pure Oil Company

8-20-2021

MGRRE_PureOilScoutTickets_Ames, Roy_1_21111117180000

MGRRE

Western Michigan University

Follow this and additional works at: <https://scholarworks.wmich.edu/pure>



Part of the Geology Commons

WMU ScholarWorks Citation

MGRRE, "MGRRE_PureOilScoutTickets_Ames, Roy_1_21111117180000" (2021). *Legacy Scout Tickets from Pure Oil Company*. 5813.

<https://scholarworks.wmich.edu/pure/5813>

This Document is brought to you for free and open access via ScholarWorks at WMU. It has been accepted for inclusion in Legacy Scout Tickets from Pure Oil Company by an authorized administrator of ScholarWorks at WMU. See the National Digital Catalogue - Science Base Catalogue for more collections submitted by MGRRE.



MGRRE_PureOilScoutTickets_Ames, Roy_1_21111117180000

API 21111117180000

Permit Number 11718

Lease Name Ames, Roy

Well Number 1

County Midland

Township 14N

Range 02E

Section 36

2021 DEQ or Pure co_name Dow Chemical Company

Pure Number 1151

Latitude 43.56985

Longitude -84.17693

WELL REPORT - OUTSIDE OPERATIONS

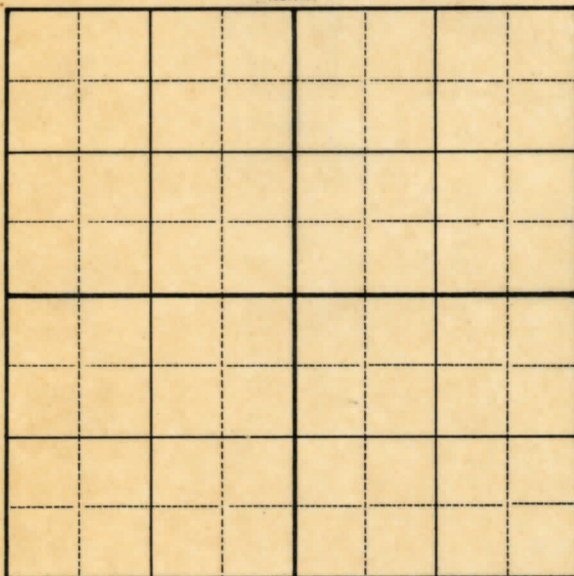
SERIAL NO. 1151STATE Michigan ~~XPSM~~ CO. MidlandOPERATOR Dow Chemical CompanyFARM Roy Ames WELL NO. 1TWP. Midland S. 36 T. 14N R. 2E
~~SURVEY~~LOC. SW SW SEWILDCAT ☐ FIELD ☐ FIELD NAME _____

MAP NO. _____ CO-ORD. _____ ELEV. _____

STATUS _____

Operator's name changed from:
Ashby Drilling Co.

NORTH

DATE 6-5-50 SCOUT H. J. G.

THE PURE OIL COMPANY

LOCATION REPORT

Date August 1, 1945 A.F.E. No. _____

Division Mich. Producing District _____ Lease Roy Ames

Acres _____ Lease No. _____ Elevation _____ Well No. 1 (Serial No. 1151)

Quadrangle SW SW SE Sec. 36 Twp. 14 N Rge. 2 E Twp. Midland

Survey _____ County Midland State Michigan

Operator Ashby Drilling Co. Map Midland Township, Midland County

Feet from North Line of Lease

330 " " East " " "

330 " " South " " "

330 " " West " " "

Feet from North Line of Section

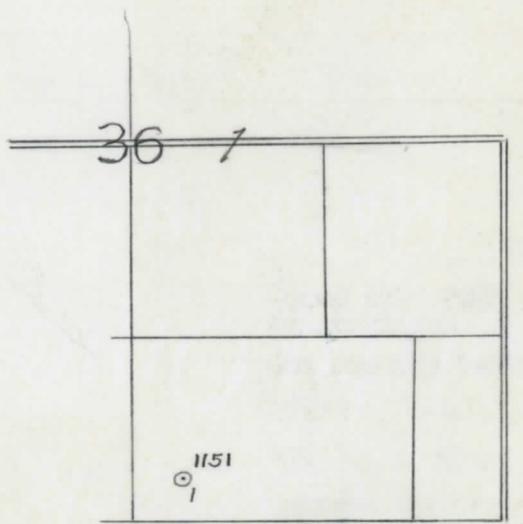
330 " " East " " "

330 " " South " " 1/4

330 " " West " " "

LEGEND

- Location
- ☼ Gas Well
- Oil Well
- ☼ Gas - Distillate Well
- or ○ Dry Hole
- Dry Showing Oil
- ☼ or ☼ Dry Showing Gas
- ⊗ Abandoned Location
- ☼ or ☼ Abandoned Gas Well
- or ● Abandoned Oil Well
- ⊗ or ⊗ Input Well



Remarks: _____

Scale _____

Submitted by _____ Civil Engineer _____ Approved by _____ Division Manager _____

Approved by _____ Vice-President - General Manager _____

Date

W.C. Blodgett
August 1, 1945

LOCATION BELOW
THE BOKE OF COMPANY

W.C. No.

COMPLETION RECORD OF WELLS DRILLED BY OTHER OPERATORS

Michigan Producing Division

W.C.

Date September 12, 1945 No. 1151
State Michigan Co. Midland ~~Disbex~~ Twp. Midland Sec. 36 Twp. 14 N Rge. 2 E
Well No. 1 Serial No. 1151 Farm Roy Ames Acres _____
Operator Ashby Drilling Company
Date started 8-1-45 Date completed 9-10-45 Elevation 621.5

PRODUCTION RECORD

1st 24 hours natural
Date of shot _____ No. of quarts _____ From _____ To _____ From _____ to _____
Date of acid _____ No. of gallons _____
1st 24 hours after acid _____
Completed as: Oil Well _____ Gas Well _____ Dry Hole X

FORMATION AND CASING RECORD

Formation	Top	Bottom	Top Pay	Bottom Pay	Remarks	Casing	
						Size	Set at
Marshall	?					8-5/8"	1324
Sunbury	?						
Berea	?						
Antrim	?						
Traverse Lime	2960				Cored 2920-2958 - no showings.		
Dundee	3532				See remarks below.		
Salt	4035				Cored 4374-4391; 4391-4406 with salt water saturation.		
Total Depth		4406					

Remarks Cored 3525-3543; pin points oil and salty taste 3532-3536; 3543-3562 - show oil 3544-3547 and 3559-3562; 3775-3790; 3790-3802; 3802-3820-3820-3838; very small show oil 3821 to 3825.

1259' equals 1259' SLM; 4101' equals 4101' SLM.

Signed D. C. Shackelford