



Legacy Scout Tickets from Pure Oil Company

8-20-2021

**MGRRE_PureOilScoutTickets_Schreiber,
Ernest_1_21111120200000**

MGRRE

Western Michigan University

Follow this and additional works at: <https://scholarworks.wmich.edu/pure>



Part of the Geology Commons

WMU ScholarWorks Citation

MGRRE, "MGRRE_PureOilScoutTickets_Schreiber, Ernest_1_21111120200000" (2021). *Legacy Scout Tickets from Pure Oil Company*. 5815.

<https://scholarworks.wmich.edu/pure/5815>

This Document is brought to you for free and open access via ScholarWorks at WMU. It has been accepted for inclusion in Legacy Scout Tickets from Pure Oil Company by an authorized administrator of ScholarWorks at WMU. See the National Digital Catalogue - Science Base Catalogue for more collections submitted by MGRRE.



MGRRE_PureOilScoutTickets_Schreiber, Ernest_1_21111120200000

API 21111120200000

Permit Number 12020

Lease Name Schreiber, Ernest

Well Number 1

County Midland

Township 13N

Range 02E

Section 2

2021 DEQ or Pure co_name Dow Chemical Company

Pure Number 1153

Latitude 43.55703

Longitude -84.19261

The Pure Oil Company
THE PURE OIL COMPANY

7.12

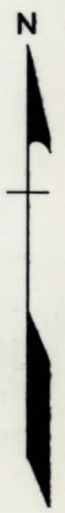
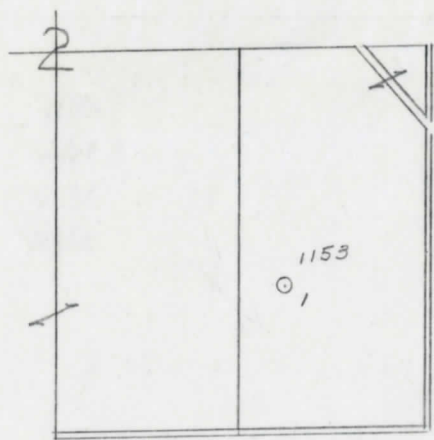
Date December 5, 1945 LOCATION REPORT A.F.E. No. _____
 Division Mich. Producing District _____ Lease Ernest Schreiber
 Acres _____ Lease No. _____ Elevation _____ Well No. 1 (Serial No. 1153)
 Quadrangle NW SE SE Sec. 2 Twp. 13 N Rge. 2 E ~~Dist~~ Ingersol
 Survey _____ County Midland State Michigan
 Operator Dow Chemical Co. Map Ingersol Township, Midland County

Feet from North Line of Lease					
990	990	"	"	East	" " "
330	330	"	"	South	" " "
		"	"	West	" " "
Feet from North Line of Section					
990	990	"	"	East	" 1/4 "
990	990	"	"	South	" " "
		"	"	West	" " "

LEGEND

- Location
- ☀ Gas Well
- Oil Well
- ☀ Gas - Distillate Well
- ∅ or ○ Dry Hole
- Dry Showing Oil
- ☀ Dry Showing Gas
- ⊗ Abandoned Location
- ☀ or ☀ Abandoned Gas Well
- or ● Abandoned Oil Well
- or ○ Input Well

Low



Remarks: _____ Scale _____

Submitted by CB Civil Engineer Approved by _____ Division Manager
 Approved by _____ Vice-President - General Manager

COMPLETION RECORD OF WELLS DRILLED BY OTHER OPERATORS

Michigan Producing Division

Date May 22, 1946 No. 1153
 State Michigan Co. Midland Twp. Ingersoll Sec. 2 Twp. 13 N Rge. 2 E
 Well No. 1 Serial No. 1153 Farm Ernest Schreiber Acres _____
 Operator Dow Chemical Company
 Date started 1-18-46 Date completed 5-17-46 Elevation 629.2

PRODUCTION RECORD

1st 24 hours natural
 Date of shot _____ No. of quarts _____ From _____ To _____ From _____ to _____
 Date of acid _____ No. of gallons _____ shot _____
 1st 24 hours after acid _____
 Completed as: Oil Well _____ Gas Well _____ Dry Hole

FORMATION AND CASING RECORD

Formation	Top	Bottom	Top Pay	Bottom Pay	Remarks	Casing	
						Size	Set at
Brown Dolomite	1050	1070	(-421)			10"	199
Marshall	1125	1380 ?	(-496)			8-1/4"	847
Coldw. Red Rock	2315	2335	(-1686)			6-5/8"	1387
Sunbury	2350	2360	(-1721)				
Berea	2370	(-1741)			Show salt water in Beres.		
Antrim	2525	(-1896)					
Traverse Form.	2625						
Traverse Lime	2883	(-2254)					
Dundee	3513	CTM.	(-2884)		Salt water 3675-82. (-3046) H.F.S.W. 3762-3770. (-3133) Water 3788-3791. (-3159)		
Total Depth		3791	(-3162)	(-16)			

Remarks Salt water 1140-1170; hole full water 645; small show oil 3040-3050.
 (-511)

Signed D. C. Shackelford