



Western Michigan University  
ScholarWorks at WMU

---

Legacy Scout Tickets from Pure Oil Company

---

8-20-2021

**MGRRE\_PureOilScoutTickets\_Dow  
Chemical\_13\_21111002877000**

MGRRE  
*Western Michigan University*

Follow this and additional works at: <https://scholarworks.wmich.edu/pure>



Part of the Geology Commons

---

#### **WMU ScholarWorks Citation**

MGRRE, "MGRRE\_PureOilScoutTickets\_Dow Chemical\_13\_21111002877000" (2021). *Legacy Scout Tickets from Pure Oil Company*. 5821.  
<https://scholarworks.wmich.edu/pure/5821>

This Document is brought to you for free and open access via ScholarWorks at WMU. It has been accepted for inclusion in Legacy Scout Tickets from Pure Oil Company by an authorized administrator of ScholarWorks at WMU. See the National Digital Catalogue - Science Base Catalogue for more collections submitted by MGRRE.



---

**MGRRE\_PureOilScoutTickets\_Dow Chemical\_13\_21111002877000**

API 21111002877000

Permit Number 287-797-656

Lease Name Dow Chemical

Well Number 13

County Midland

Township 14N

Range 02E

Section 19

2021 DEQ or Pure co\_name Dow Chemical Company

Pure Number 1164

Latitude 43.59782732

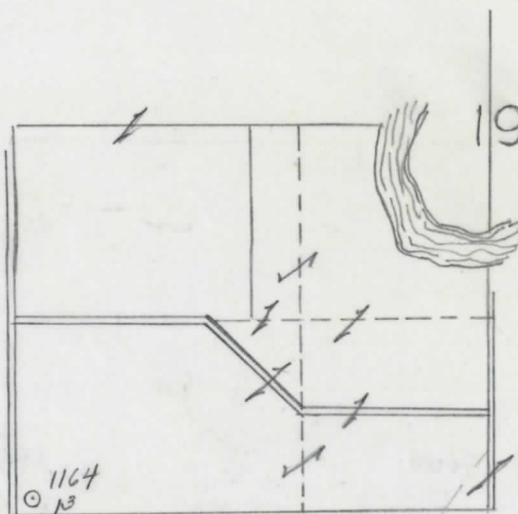
Longitude -84.29015822

THE PURE OIL COMPANY  
 LOCATION REPORT

Date December 4, 1946 A.F.E. No. \_\_\_\_\_  
 Division Mich. Producing District \_\_\_\_\_ Lease Fee Fee \_\_\_\_\_  
 Acres \_\_\_\_\_ Lease No. \_\_\_\_\_ Elevation \_\_\_\_\_ Well No. 13 (Serial No. 1164)  
 Quadrangle SW Sec. 19 Twp. 14 N Rge. 2 E ~~SW~~ ~~SE~~ Midland Twp. Midland  
 Survey \_\_\_\_\_ County Midland State Michigan  
 Operator Dow Chemical Co. Map Midland Township, Midland County  
Dow Chemical Company

_____	_____	Feet from North Line of Lease
_____	_____	" " East " " "
_____	_____	" " South " " "
_____	_____	" " West " " "
_____	_____	Feet from North Line of Section
<u>115</u>	<u>115</u>	" " East " " "
<u>130</u>	<u>130</u>	" " South " " "
_____	_____	" " West " " "

- LEGEND**
- Location
  - ☀ Gas Well
  - Oil Well
  - ☀ Gas - Distillate Well
  - ∅ or ○ Dry Hole
  - Dry Showing Oil
  - ☀ Dry Showing Gas
  - ⊗ Abandoned Location
  - ☀ or ⊗ Abandoned Gas Well
  - or ● Abandoned Oil Well
  - or ○ Input Well



Remarks: \_\_\_\_\_  
 \_\_\_\_\_  
 \_\_\_\_\_

Scale \_\_\_\_\_

Submitted by \_\_\_\_\_ Civil Engineer Approved by \_\_\_\_\_ Division Manager  
 Approved by \_\_\_\_\_ Vice-President - General Manager



COMPLETION RECORD OF WELLS DRILLED BY OTHER OPERATORS

Michigan Producing Division

Date December 4, 1946 No. 1164  
 State Michigan Co. Midland District Midland  
 Twp. Midland Sec. 19 Twp. 14 N Rge. 2 E  
 Well No. 13 Serial No. 1164 Farm Fee Acres \_\_\_\_\_  
 Operator Dow Chemical Company  
 Date started 7-21-46 Date completed 9-10-46 Elevation 622.8

PRODUCTION RECORD

1st 24 hours natural BRINE WELL  
 Date of shot \_\_\_\_\_ No. of quarts \_\_\_\_\_ From \_\_\_\_\_ To \_\_\_\_\_ From \_\_\_\_\_ To \_\_\_\_\_  
 Date of acid \_\_\_\_\_ No. of gallons \_\_\_\_\_ shot \_\_\_\_\_  
 1st 24 hours after acid \_\_\_\_\_  
 Completed as: Oil Well \_\_\_\_\_ Gas Well \_\_\_\_\_ Dry Hole \_\_\_\_\_

FORMATION AND CASING RECORD

Formation	Top	Bottom	Top Pay	Bottom Pay	Remarks	Casing	
						Size	Set at
Marshall	1200	1390				13-3/8"	1400
Antrim	2585					8-5/8"	4303
Traverse Form.	2958						
Traverse Lime	2958						
Dundee	3608						
Sylvania	4980	5190			Water 5002-5178.		
Total Depth		5200					

Remarks First Gyp at 853 - Cored 2973-2991 - recovered 18' plus with show oil and gas; cored 3614-3634 rec. 19'6" plus; 3873-3892 rec. 7 ft. plus; 3892-3904 rec. 6 ft. plus; D.S.T. 3875-3904-open 1/2 hours-rec. very small show gas and 1500 ft. salt water; Salt 4121-very small show oil 4188 - base salt 4440 - cored 4458-4478 rec. 19'6" plus.

Signed Harry J. Gaspeny