



Western Michigan University  
ScholarWorks at WMU

---

Legacy Scout Tickets from Pure Oil Company

---

8-20-2021

**MGRRE\_PureOilScoutTickets\_Meekoff, J.\_1\_21113037180000**

MGRRE

*Western Michigan University*

Follow this and additional works at: <https://scholarworks.wmich.edu/pure>



Part of the Geology Commons

---

#### **WMU ScholarWorks Citation**

MGRRE, "MGRRE\_PureOilScoutTickets\_Meekoff, J.\_1\_21113037180000" (2021). *Legacy Scout Tickets from Pure Oil Company*. 5826.

<https://scholarworks.wmich.edu/pure/5826>

This Document is brought to you for free and open access via ScholarWorks at WMU. It has been accepted for inclusion in Legacy Scout Tickets from Pure Oil Company by an authorized administrator of ScholarWorks at WMU. See the National Digital Catalogue - Science Base Catalogue for more collections submitted by MGRRE.



---

**MGRRE\_PureOilScoutTickets\_Meekoff, J.\_1\_21113037180000**

API 21113037180000

Permit Number 3718

Lease Name Meekoff, J.

Well Number 1

County Missaukee

Township 21N

Range 06W

Section 30

2021 DEQ or Pure co\_name Rex Oil and Gas Company

Pure Number 5

Latitude 44.18463

Longitude -85.07406

The Pure Oil Company  
THE PURE OIL COMPANY

DATE December 3, 1936

LOCATION REPORT

No. 5

STATE Michigan COUNTY Missaukee DIST. Clam Union SEC. 30 TOWN 21 N RANGE 6 W

WELL No. 1 (SERIAL No. 5) FARM J. Meekoff ACRES

NAME OF STREAM OR WATERS \_\_\_\_\_ QUADRANGLE NE-NE-SE

OPERATOR Rex Oil & Gas Company Map Clam Union Township, Missaukee County

330 330 Feet from North Line of Farm

330 330 " " East " " "

" " South " " "

" " West " " "

330 330 Feet from North Line 1/4 Section

330 330 " " East " " "

" " South " " "

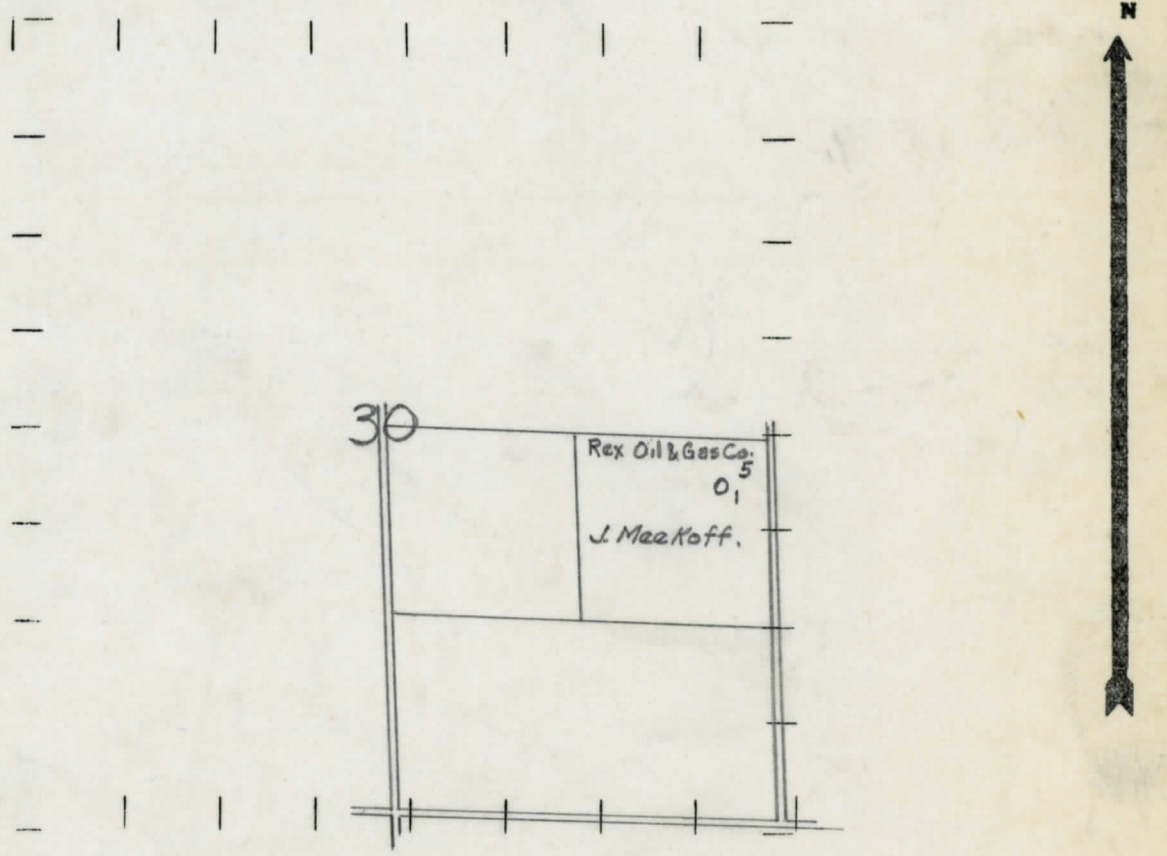
" " West " " "

*Sp 12-1-36*

LEGEND

- LOCATION
- ⊕ RIG
- ⊕ DRILLING
- ☀ GAS WELL
- OIL WELL
- ⬮ SMALL OIL WELL
- ⊙ DRY HOLE
- ⬮ DRY SHOWING OIL
- ☀ DRY SHOWING GAS
- ⊙ ABANDONED LOCATION
- ☀ ABANDONED GAS WELL
- ⬮ ABANDONED OIL WELL

NOTE: Below make tracing from map, (when no map is obtainable make sketch) showing farm, center of section, this location with measurements and also wells, dry holes, or other locations in the vicinity of this location.



REMARKS:

SIGNED

Superintendent or Foreman.



COMPLETION RECORD OF WELLS DRILLED BY OTHER OPERATORS

Michigan Producing Division

Date September 16, 1937 No. 5  
 State Michigan County Missaukee Dist. Clam Union  
 Twp. Clam Union Sec. 30 Twp. 21 N Rge. 6 W  
 Well No. 1 (Serial No.) (County No.) 5 Farm J. Meekoff Acres \_\_\_\_\_  
 Operator Rex Oil & Gas Company Information secured ~~from~~ Scouting Department by \_\_\_\_\_  
 Date well started 12-1-36 Date well completed 9-10-37 Elevation 1178.4

PRODUCTION RECORD

1st 24 hours natural Dry Hole  
 2nd 24 hours natural \_\_\_\_\_  
 Date of shot \_\_\_\_\_ No. of quarts \_\_\_\_\_ From \_\_\_\_\_ to \_\_\_\_\_ From \_\_\_\_\_ to \_\_\_\_\_  
 Date of acid \_\_\_\_\_ No. of gallons \_\_\_\_\_  
 1st 24 hours after <sup>shot</sup> acid \_\_\_\_\_  
 2nd 24 hours after <sup>shot</sup> acid \_\_\_\_\_

FORMATION AND CASING RECORD

Formation	Top	Bottom	Top Pay	Bottom Pay	Remarks	Casing	
						Size	Set
Marshall	1455					14"	210
Red Rock		1670				6-5/8"	1710
Berea	2705	2755				5-5/16"	3771
Antrim	2805						
Traverse	3205			3250	Show salt water		
Monroe	3912	S.L.M.		3927	H.F.B.S.W.		
Total Depth		3937					

Remarks Small show oil and gas 3395 - hole full salt water 3395-show oil and gas 3455-3460-  
show oil and gas and hole full sulphur water 3575-3577.

Signed E. C. Shackelford