



Western Michigan University  
ScholarWorks at WMU

---

Legacy Scout Tickets from Pure Oil Company

---

8-20-2021

## MGRRE\_PureOilScoutTickets\_Myers, Walter E.\_1\_unk

MGRRE

*Western Michigan University*

Follow this and additional works at: <https://scholarworks.wmich.edu/pure>



Part of the Geology Commons

---

### WMU ScholarWorks Citation

MGRRE, "MGRRE\_PureOilScoutTickets\_Myers, Walter E.\_1\_unk" (2021). *Legacy Scout Tickets from Pure Oil Company*. 5827.

<https://scholarworks.wmich.edu/pure/5827>

This Document is brought to you for free and open access via ScholarWorks at WMU. It has been accepted for inclusion in Legacy Scout Tickets from Pure Oil Company by an authorized administrator of ScholarWorks at WMU. See the National Digital Catalogue - Science Base Catalogue for more collections submitted by MGRRE.



---

MGRRE\_PureOilScoutTickets\_Myers, Walter E.\_1\_unk

API unk

Permit Number unk

Lease Name Myers, Walter E.

Well Number 1

County Missaukee

Township 22N

Range 05W

Section 29

2021 DEQ or Pure co\_name Pure Oil Company

Pure Number 6

Latitude 44.2705955

Longitude -84.943257

THE PURE OIL COMPANY

LOCATION REPORT

DATE August 12, 1937

No. 6

STATE Michigan COUNTY Missaukee DIST. Butterfield TWP. Butterfield SEC. 29 TOWN 22 N RANGE 5 W  
WELL No. 1 (SERIAL No. 6) FARM Walter E. Myers ACRES

NAME OF STREAM OR WATERS \_\_\_\_\_ QUADRANGLE NW-NW-SW  
NW NW SW

OPERATOR The Pure Oil Company - Core Test Map Butterfield Township, Missaukee County  
Pure Oil Co (Core Test) Butterfield-Missaukee

150 150 Feet from North Line of Farm

\_\_\_\_\_ " " East " " "

\_\_\_\_\_ " " South " " "

145 145 " " West " " "

150 150 Feet from North Line of Section

\_\_\_\_\_ " " East " " "

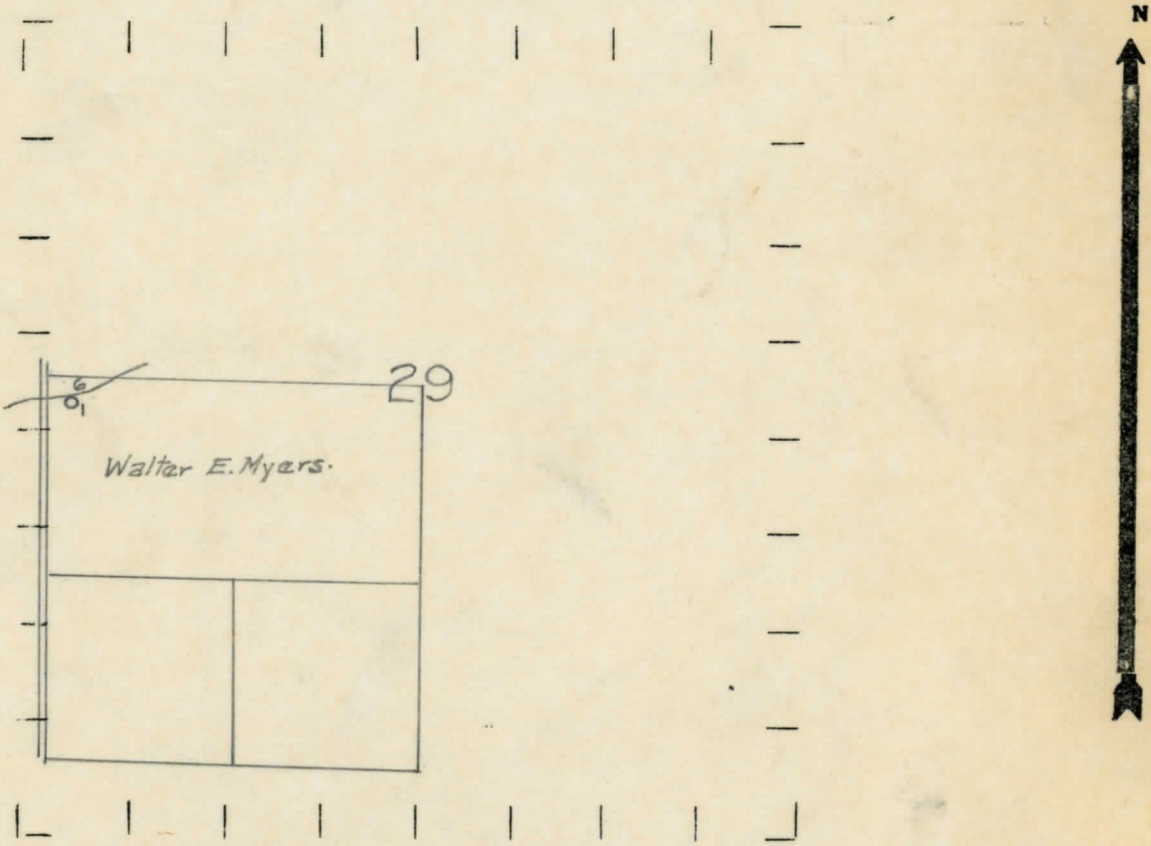
\_\_\_\_\_ " " South " " "

145 145 " " West " " "

LEGEND

- LOCATION
- ⊕ RIG
- ⊕ DRILLING
- ☀ GAS WELL
- OIL WELL
- ⬮ SMALL OIL WELL
- ⊙ DRY HOLE
- ⬮ DRY SHOWING OIL
- ⊙ DRY SHOWING GAS
- ⊙ ABANDONED LOCATION
- ☀ ABANDONED GAS WELL
- ⬮ ABANDONED OIL WELL

NOTE: Below make tracing from map, (when no map is obtainable make sketch) showing farm, center of section, this location with measurements and also wells, dry holes, or other locations in the vicinity of this location.



REMARKS: \_\_\_\_\_  
\_\_\_\_\_

SIGNED R. L. J. J. J.  
Superintendent or Foreman.