



Western Michigan University
ScholarWorks at WMU

Legacy Scout Tickets from Pure Oil Company

8-20-2021

MGRRE_PureOilScoutTickets_Henry Spitzbergen (112726)_1_None

MGRRE

Western Michigan University

Follow this and additional works at: <https://scholarworks.wmich.edu/pure>



Part of the Geology Commons

WMU ScholarWorks Citation

MGRRE, "MGRRE_PureOilScoutTickets_Henry Spitzbergen (112726)_1_None" (2021). *Legacy Scout Tickets from Pure Oil Company*. 5830.

<https://scholarworks.wmich.edu/pure/5830>

This Document is brought to you for free and open access via ScholarWorks at WMU. It has been accepted for inclusion in Legacy Scout Tickets from Pure Oil Company by an authorized administrator of ScholarWorks at WMU. See the National Digital Catalogue - Science Base Catalogue for more collections submitted by MGRRE.



MGRRE_PureOilScoutTickets_Henry Spitzbergen (112726)_1_None

API None

Permit Number None

Lease Name Henry Spitzbergen (112726)

Well Number 1

County Missaukee

Township 21N

Range 05W

Section 8

2021 DEQ or Pure co_name Pure Oil Company

Pure Number 9

Latitude 44.2270377

Longitude -84.9425554

THE PURE OIL COMPANY

DATE April 15, 1938

LOCATION REPORT

No. 9

STATE Mich COUNTY Missaukee DIST. Holland SEC. 8 TOWN 21 N RANGE 5 W

WELL No. 1 (SERIAL No. 9) FARM Henry Spitzbergen (112726) 140 ACRES

NAME OF STREAM OR WATERS _____ QUADRANGLE SE-SE-SW.

OPERATOR Pure Oil Co. (Core Test) Map Holland Twp - Missaukee Co.

_____ Feet from North Line of Farm

_____ " " East " " "

_____ " " South " " "

_____ " " West " " "

_____ Feet from North Line of Section

170 " " East " " 1/4 "

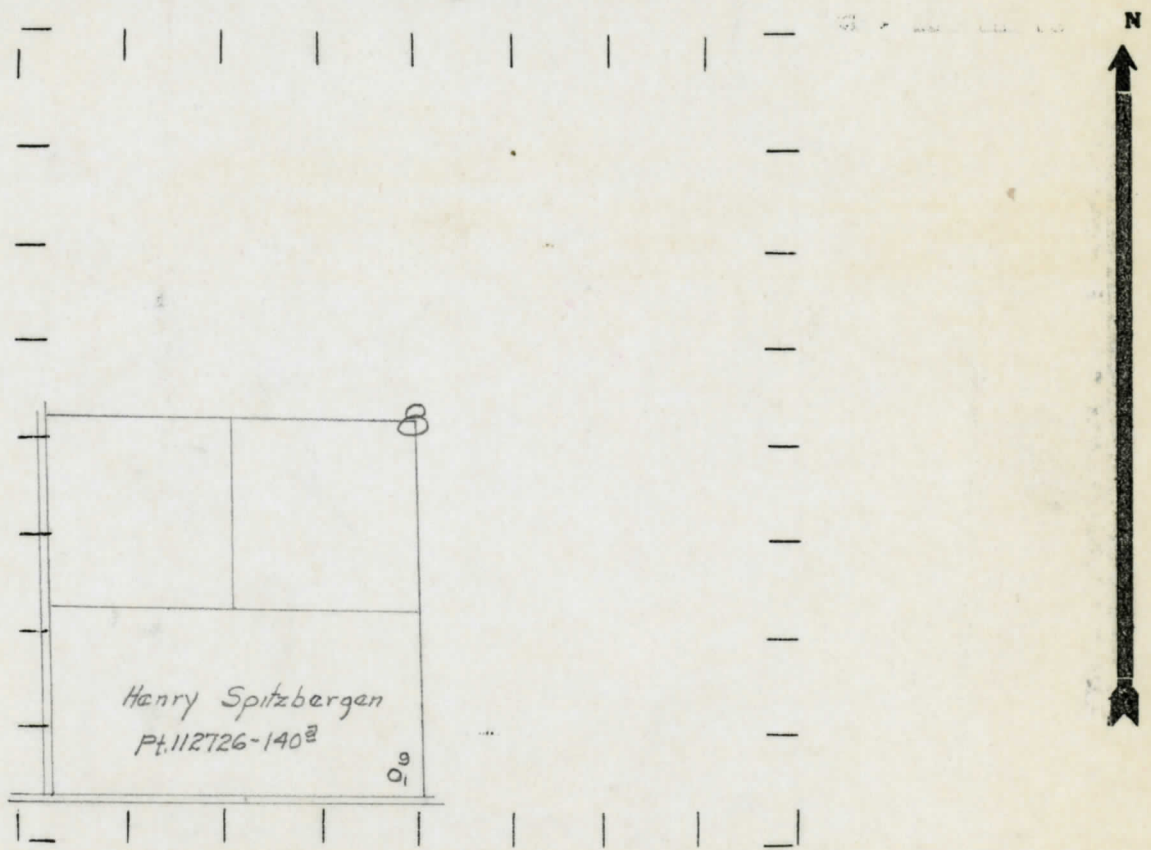
180 " " South " " "

_____ " " West " " "

LEGEND

- LOCATION
- ⊕ RIG
- ⊕ DRILLING
- ☀ GAS WELL
- OIL WELL
- ⬮ SMALL OIL WELL
- ⊖ DRY HOLE
- ⬮ DRY SHOWING OIL
- ☀ DRY SHOWING GAS
- ⊖ ABANDONED LOCATION
- ☀ ABANDONED GAS WELL
- ⬮ ABANDONED OIL WELL

NOTE: Below make tracing from map, (when no map is obtainable make sketch) showing farm, center of section, this location with measurements and also wells, dry holes, or other locations in the vicinity of this location.



REMARKS: Core Test.

SIGNED

R. L. Yeager.
Superintendent or Foreman.