



Western Michigan University  
ScholarWorks at WMU

---

Legacy Scout Tickets from Pure Oil Company

---

8-20-2021

## MGRRE\_PureOilScoutTickets\_Bovan, Thomas (Pt.112423)\_1\_None

MGRRE

*Western Michigan University*

Follow this and additional works at: <https://scholarworks.wmich.edu/pure>



Part of the Geology Commons

---

### WMU ScholarWorks Citation

MGRRE, "MGRRE\_PureOilScoutTickets\_Bovan, Thomas (Pt.112423)\_1\_None" (2021). *Legacy Scout Tickets from Pure Oil Company*. 5834.

<https://scholarworks.wmich.edu/pure/5834>

This Document is brought to you for free and open access via ScholarWorks at WMU. It has been accepted for inclusion in Legacy Scout Tickets from Pure Oil Company by an authorized administrator of ScholarWorks at WMU. See the National Digital Catalogue - Science Base Catalogue for more collections submitted by MGRRE.



---

**MGRRE\_PureOilScoutTickets\_Bovan, Thomas (Pt.112423)\_1\_None**

API None

Permit Number None

Lease Name Bovan, Thomas (Pt.112423)

Well Number 1

County Missaukee

Township 21N

Range 06W

Section 7

2021 DEQ or Pure co\_name Pure Oil Company

Pure Number 12

Latitude 44.2290962

Longitude -85.0837958

THE PURE OIL COMPANY

DATE Aug 3, 1938

LOCATION REPORT

No. 12

STATE Mich COUNTY Missaukee DIST. Clam Union SEC. 7 TOWN 21 N RANGE 6W.

WELL No. 1 (SERIAL No. 12) FARM Thomas Bovan (Pt. 112423) 160 ACRES

NAME OF STREAM OR WATERS 1 QUADRANGLE NE-NE-S1E

OPERATOR Pure Oil Co (Core Test) Map Clam Union - Missaukee Co.

280 Feet from North Line of Farm

1505' " " East " " "

" " South " " "

" " West " " "

280 Feet from North Line of Section

185 " " East " " "

" " South " " "

" " West " " "

LEGEND

○ LOCATION

⊙ RIG

⊕ DRILLING

☀ GAS WELL

● OIL WELL

⬇ SMALL OIL WELL

⊖ DRY HOLE

⬆ DRY SHOWING OIL

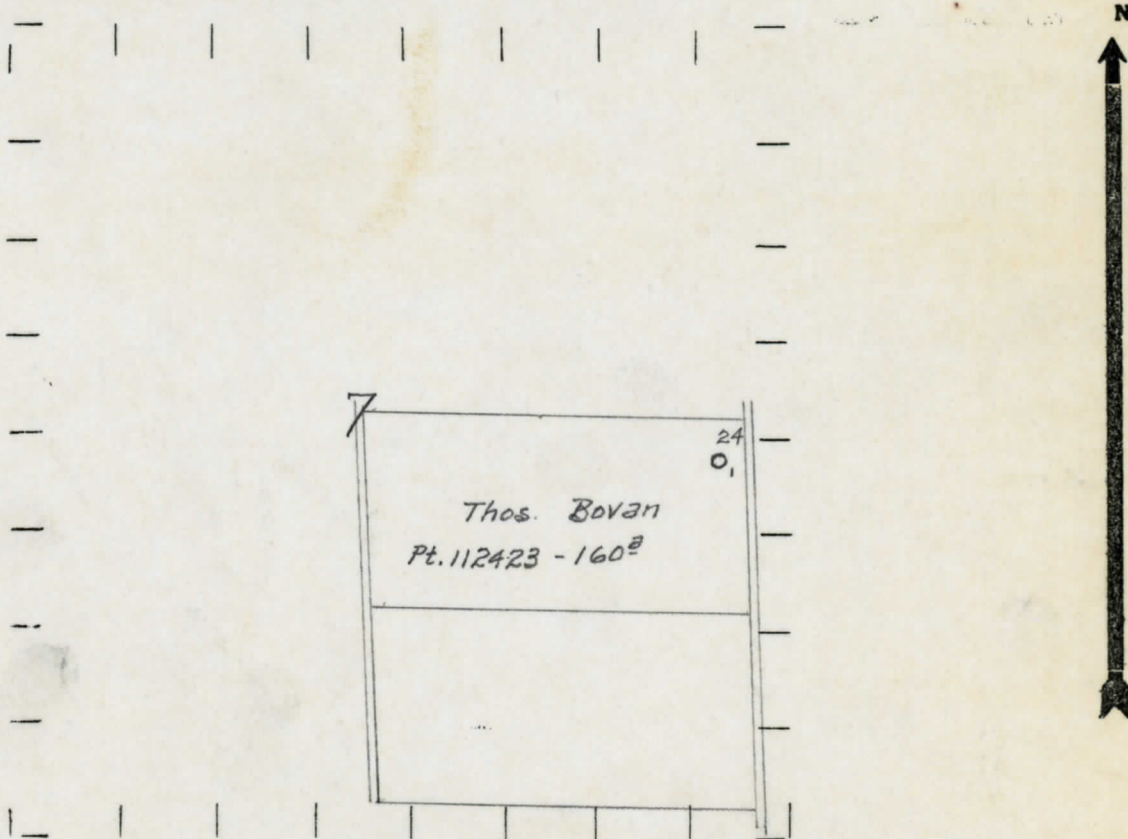
⊖ DRY SHOWING GAS

⊖ ABANDONED LOCATION

☀ ABANDONED GAS WELL

⬆ ABANDONED OIL WELL

NOTE: Below make tracing from map, (when no map is obtainable make sketch) showing farm, center of section, this location with measurements and also wells, dry holes, or other locations in the vicinity of this location.



REMARKS:

SIGNED

R. P. Yeager

Superintendent or Foreman.