



Western Michigan University
ScholarWorks at WMU

Legacy Scout Tickets from Pure Oil Company

8-20-2021

**MGRRE_PureOilScoutTickets_Peter
Berghouse_1_21113620027000**

MGRRE
Western Michigan University

Follow this and additional works at: <https://scholarworks.wmich.edu/pure>



Part of the Geology Commons

WMU ScholarWorks Citation

MGRRE, "MGRRE_PureOilScoutTickets_Peter Berghouse_1_21113620027000" (2021). *Legacy Scout Tickets from Pure Oil Company*. 5835.
<https://scholarworks.wmich.edu/pure/5835>

This Document is brought to you for free and open access via ScholarWorks at WMU. It has been accepted for inclusion in Legacy Scout Tickets from Pure Oil Company by an authorized administrator of ScholarWorks at WMU. See the National Digital Catalogue - Science Base Catalogue for more collections submitted by MGRRE.



MGRRE_PureOilScoutTickets_Peter Berghouse_1_21113620027000

API 21113620027000

Permit Number NP18448

Lease Name Peter Berghouse

Well Number 1

County Missaukee

Township 22N

Range 06W

Section 28

2021 DEQ or Pure co_name Pure Oil Company

Pure Number 13

THE PURE OIL COMPANY

LOCATION REPORT

DATE Sept. 6, 1938

No. 13

STATE Mich COUNTY Missaukee DIST. TWP. Aetna SEC. 28 TOWN 22N RANGE 6W.

WELL No. 1 (SERIAL No. 13) FARM Peter Berghouse ACRES

NAME OF STREAM OR WATERS _____ QUADRANGLE NE-SE-NE.

OPERATOR Pure Oil Co.-(Core Test) Map Aetna Twp- Missaukee Co.

Feet from North Line of Farm

“ “ East “ “ “

800 “ “ South “ “ “

1150 “ “ West “ “ “

Feet from North Line of Section

170 “ “ East “ “ “

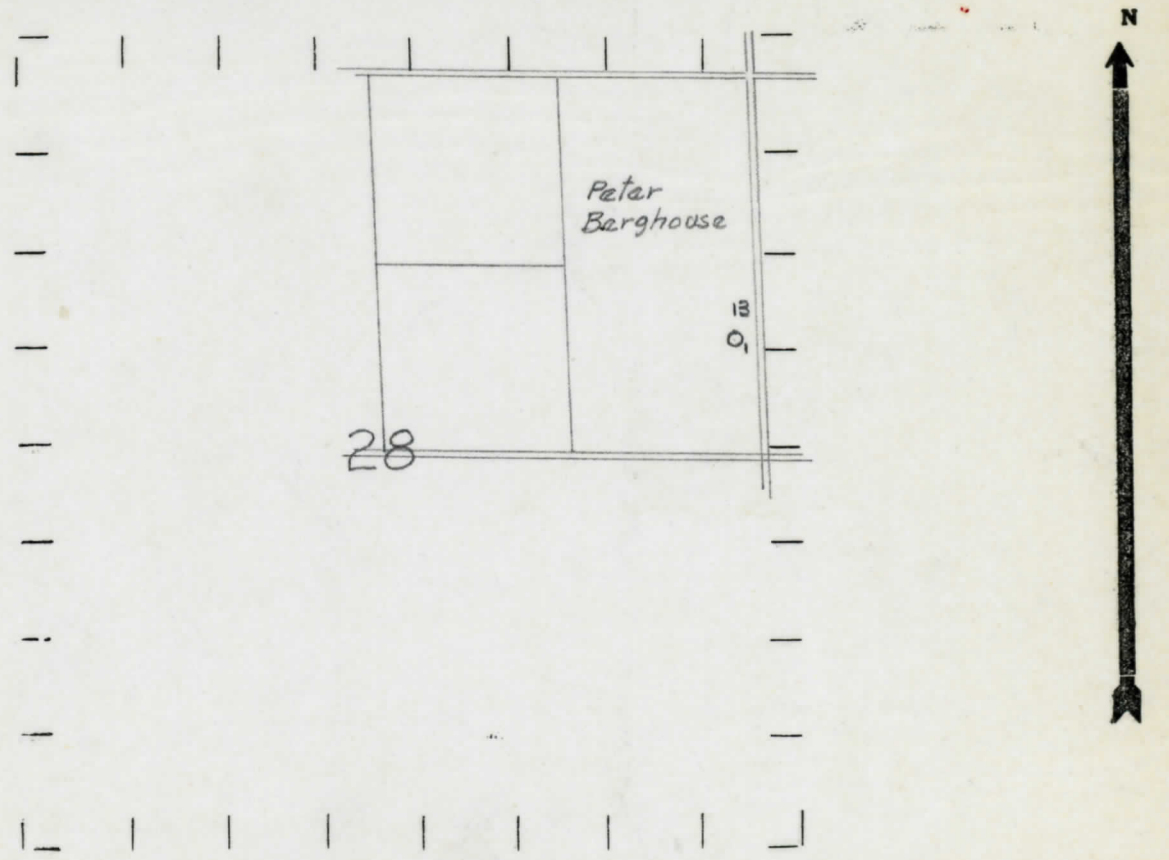
800 “ “ South “ “ 1/4 “

“ “ West “ “ “

LEGEND

- LOCATION
- ⊙ RIG
- ⊕ DRILLING
- ☀ GAS WELL
- OIL WELL
- ⬮ SMALL OIL WELL
- ⊖ DRY HOLE
- ⬮ DRY SHOWING OIL
- ☀ DRY SHOWING GAS
- ⊖ ABANDONED LOCATION
- ☀ ABANDONED GAS WELL
- ⬮ ABANDONED OIL WELL

NOTE: Below make tracing from map, (when no map is obtainable make sketch) showing farm, center of section, this location with measurements and also wells, dry holes, or other locations in the vicinity of this location.



REMARKS:

SIGNED

R. L. Berger
Superintendent or Foreman.