



Western Michigan University
ScholarWorks at WMU

Legacy Scout Tickets from Pure Oil Company

8-20-2021

MGRRE_PureOilScoutTickets_Hause, A._1_unk

MGRRE

Western Michigan University

Follow this and additional works at: <https://scholarworks.wmich.edu/pure>



Part of the Geology Commons

WMU ScholarWorks Citation

MGRRE, "MGRRE_PureOilScoutTickets_Hause, A._1_unk" (2021). *Legacy Scout Tickets from Pure Oil Company*. 5837.

<https://scholarworks.wmich.edu/pure/5837>

This Document is brought to you for free and open access via ScholarWorks at WMU. It has been accepted for inclusion in Legacy Scout Tickets from Pure Oil Company by an authorized administrator of ScholarWorks at WMU. See the National Digital Catalogue - Science Base Catalogue for more collections submitted by MGRRE.



MGRRE_PureOilScoutTickets_Hause, A._1_unk

API unk

Permit Number unk

Lease Name Hause, A.

Well Number 1

County Missaukee

Township 22N

Range 07W

Section 28

2021 DEQ or Pure co_name Pure Oil Company

Pure Number 15

Latitude 44.27333

Longitude -85.164902

THE PURE OIL COMPANY

LOCATION REPORT

No. 15

DATE Sept. 28, 1938

STATE Mich COUNTY Missaukee DIST. Reeder. SEC. 28 TOWN 22 N RANGE 7 W.

WELL No. 1 (SERIAL No. 15) FARM A. Hause ACRES

NAME OF STREAM OR WATERS _____ QUADRANGLE NE-NE-NE.

OPERATOR Pure Oil Co (Core Test) Map Reeder Missaukee

560 Feet from North Line of Farm

350 " " East " " "

" " South " " "

" " West " " "

560 Feet from North Line of Section

350 " " East " " "

" " South " " "

" " West " " "

LEGEND

○ LOCATION

⊕ RIG

⊕ DRILLING

☀ GAS WELL

● OIL WELL

⊕ SMALL OIL WELL

⊕ DRY HOLE

⊕ DRY SHOWING OIL

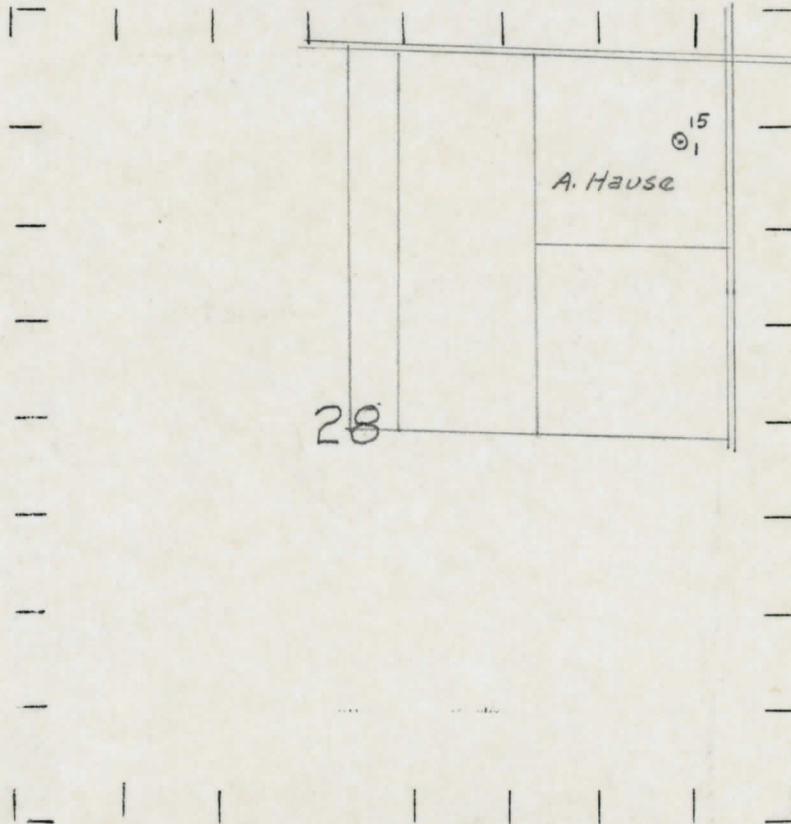
⊕ DRY SHOWING GAS

⊕ ABANDONED LOCATION

☀ ABANDONED GAS WELL

⊕ ABANDONED OIL WELL

NOTE: Below make tracing from map, (when no map is obtainable make sketch) showing farm, center of section, this location with measurements and also wells, dry holes, or other locations in the vicinity of this location.



REMARKS:

SIGNED

R. L. Yeager
Superintendent or Foreman.