



Western Michigan University
ScholarWorks at WMU

Legacy Scout Tickets from Pure Oil Company

8-20-2021

MGRRE_PureOilScoutTickets_Kate Hovey - B. Jager et al_1_None

MGRRE

Western Michigan University

Follow this and additional works at: <https://scholarworks.wmich.edu/pure>



Part of the Geology Commons

WMU ScholarWorks Citation

MGRRE, "MGRRE_PureOilScoutTickets_Kate Hovey - B. Jager et al_1_None" (2021). *Legacy Scout Tickets from Pure Oil Company*. 5838.

<https://scholarworks.wmich.edu/pure/5838>

This Document is brought to you for free and open access via ScholarWorks at WMU. It has been accepted for inclusion in Legacy Scout Tickets from Pure Oil Company by an authorized administrator of ScholarWorks at WMU. See the National Digital Catalogue - Science Base Catalogue for more collections submitted by MGRRE.



MGRRE_PureOilScoutTickets_Kate Hovey - B. Jager et al_1_None

API None

Permit Number None

Lease Name Kate Hovey - B. Jager et al

Well Number 1

County Missaukee

Township 22N

Range 07W

Section 25

2021 DEQ or Pure co_name Pure Oil Company

Pure Number 16

Latitude 44.2728659

Longitude -85.1042978

THE PURE OIL COMPANY

DATE Nov. 1 1938

LOCATION REPORT

No. 16

STATE Mich COUNTY Missaukee DIST. Reedar SEC. 25 TOWN 22N RANGE 7W.

WELL No. 1 (SERIAL No. 16) FARM Kate Howey - B. Jager, et al. ACRES _____

NAME OF STREAM OR WATERS _____ QUADRANGLE NE-NE-NE.

OPERATOR Pure Oil Co. (Core Test.) Map Reedar Missaukee Co.

115 Feet from North Line of Farm

500 " " East " " "

" " South " " "

" " West " " "

115 Feet from North Line of Section

500 " " East " " "

" " South " " "

" " West " " "

LEGEND

○ LOCATION

⊙ RIG

⊕ DRILLING

☀ GAS WELL

● OIL WELL

⦿ SMALL OIL WELL

⊖ DRY HOLE

⦿ DRY SHOWING OIL

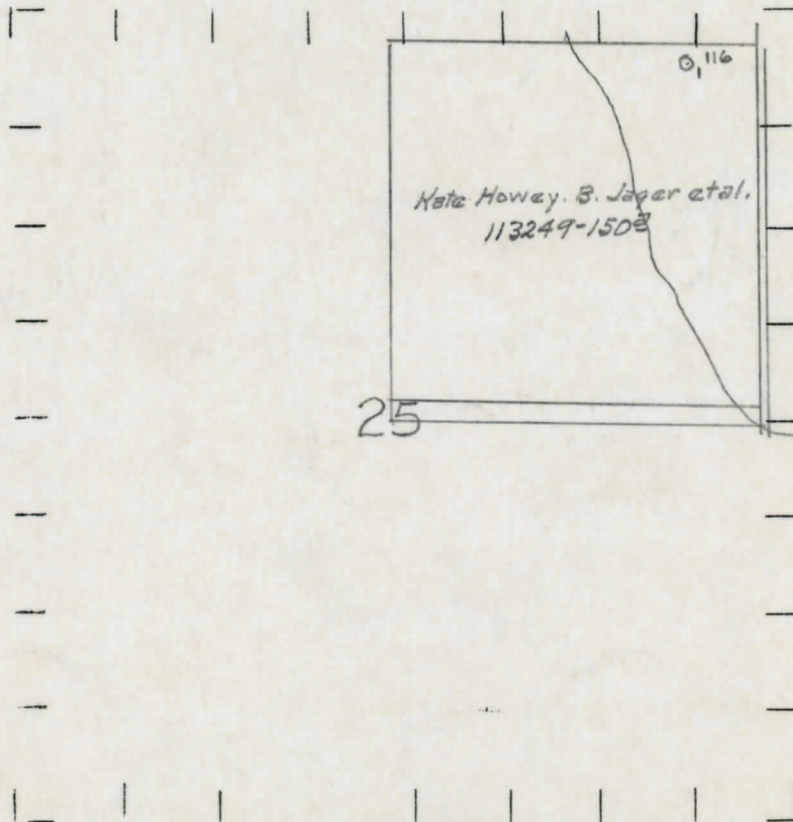
⦿ DRY SHOWING GAS

⊖ ABANDONED LOCATION

☀ ABANDONED GAS WELL

⦿ ABANDONED OIL WELL

NOTE: Below make tracing from map, (when no map is obtainable make sketch) showing farm, center of section, this location with measurements and also wells, dry holes, or other locations in the vicinity of this location.



REMARKS:

SIGNED

R. P. Yeager,
 Superintendent or Foreman.