



Western Michigan University
ScholarWorks at WMU

Legacy Scout Tickets from Pure Oil Company

8-20-2021

MGRRE_PureOilScoutTickets_Lillian & Orland Scott (113469)_1_None

MGRRE

Western Michigan University

Follow this and additional works at: <https://scholarworks.wmich.edu/pure>



Part of the Geology Commons

WMU ScholarWorks Citation

MGRRE, "MGRRE_PureOilScoutTickets_Lillian & Orland Scott (113469)_1_None" (2021). *Legacy Scout Tickets from Pure Oil Company*. 5839.

<https://scholarworks.wmich.edu/pure/5839>

This Document is brought to you for free and open access via ScholarWorks at WMU. It has been accepted for inclusion in Legacy Scout Tickets from Pure Oil Company by an authorized administrator of ScholarWorks at WMU. See the National Digital Catalogue - Science Base Catalogue for more collections submitted by MGRRE.



MGRRE_PureOilScoutTickets_Lillian & Orland Scott (113469)_1_None

API None

Permit Number None

Lease Name Lillian & Orland Scott (113469)

Well Number 1

County Missaukee

Township 21N

Range 07W

Section 10

2021 DEQ or Pure co_name Pure Oil Company

Pure Number 17

Latitude 44.2295599

Longitude -85.1441494

THE PURE OIL COMPANY

DATE Nov. 29, 1938

LOCATION REPORT

No. 17

STATE Mich COUNTY Missaukee DIST. Riverside SEC. 10 TOWN 21-N RANGE 7-W

WELL No. 1 (SERIAL No. 17) FARM Lillian & Orland Scott (113469) 160 ACRES

NAME OF STREAM OR WATERS _____ QUADRANGLE NE-NE-SE

OPERATOR Pure Oil Co. (Core Test) Map Riverside - Missaukee Co.

620 Feet from North Line of Farm

420 " " East " " "

" " South " " "

" " West " " "

620 Feet from North Line of ¹/₄ Section

420 " " East " " "

" " South " " "

" " West " " "

LEGEND

○ LOCATION

① RIG

⊕ DRILLING

☀ GAS WELL

● OIL WELL

⦿ SMALL OIL WELL

⊖ DRY HOLE

⦿ DRY SHOWING OIL

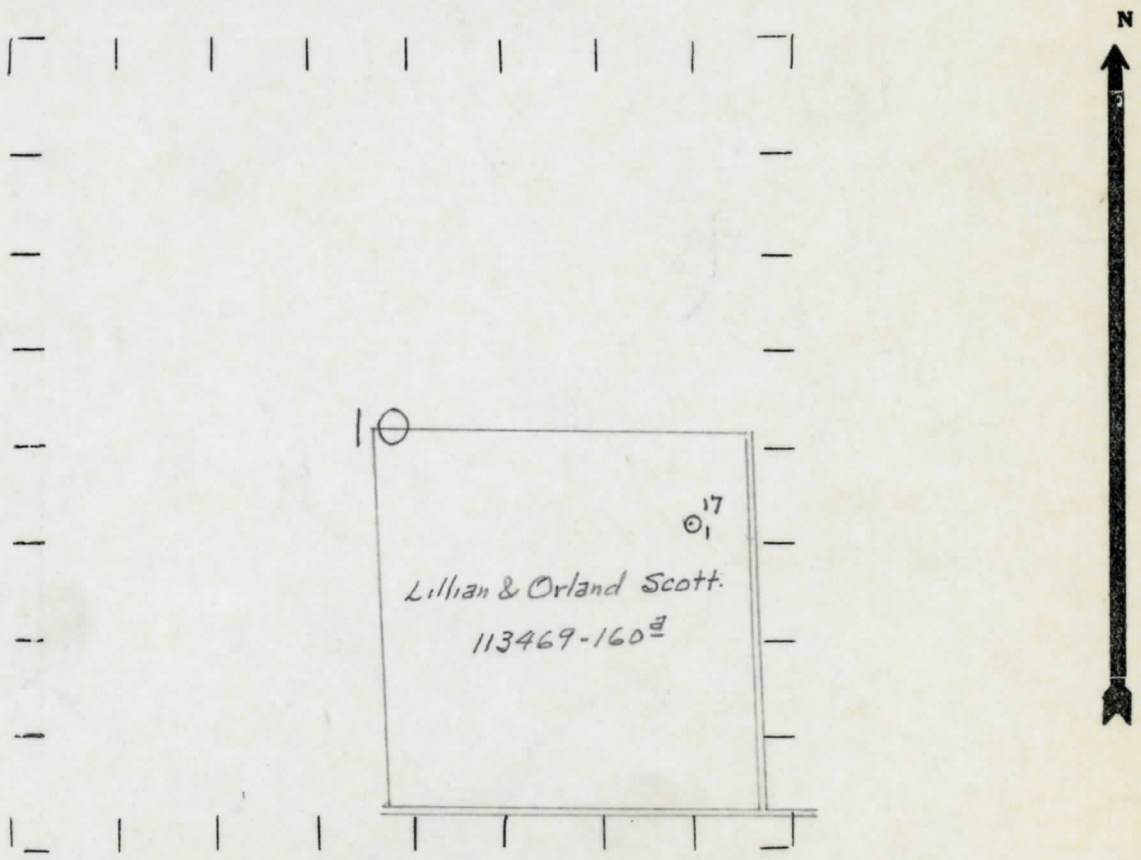
⊖ DRY SHOWING GAS

⊖ ABANDONED LOCATION

☀ ABANDONED GAS WELL

⦿ ABANDONED OIL WELL

NOTE: Below make tracing from map, (when no map is obtainable make sketch) showing farm, center of section, this location with measurements and also wells, dry holes, or other locations in the vicinity of this location.



REMARKS:

SIGNED

R. L. Jeger

Superintendent or Foreman.