



Western Michigan University
ScholarWorks at WMU

Legacy Scout Tickets from Pure Oil Company

8-20-2021

MGRRE_PureOilScoutTickets_Schut, John J._1_21113057810000

MGRRE

Western Michigan University

Follow this and additional works at: <https://scholarworks.wmich.edu/pure>



Part of the Geology Commons

WMU ScholarWorks Citation

MGRRE, "MGRRE_PureOilScoutTickets_Schut, John J._1_21113057810000" (2021). *Legacy Scout Tickets from Pure Oil Company*. 5841.

<https://scholarworks.wmich.edu/pure/5841>

This Document is brought to you for free and open access via ScholarWorks at WMU. It has been accepted for inclusion in Legacy Scout Tickets from Pure Oil Company by an authorized administrator of ScholarWorks at WMU. See the National Digital Catalogue - Science Base Catalogue for more collections submitted by MGRRE.



MGRRE_PureOilScoutTickets_Schut, John J._1_21113057810000

API 21113057810000

Permit Number 5781

Lease Name Schut, John J.

Well Number 1

County Missaukee

Township 21N

Range 08W

Section 4

2021 DEQ or Pure co_name Freeman Oil Company

Pure Number 19

Latitude 44.2392

Longitude -85.28406

THE PURE OIL COMPANY
COMPLETION RECORD OF WELLS DRILLED BY OTHER OPERATORS

DATE January 26, 1939

LOCATION REPORT

No. 19

STATE Michigan COUNTY Miss Missaukee DIST Richland TWP. Richland SEC. 4 TOWN 21 N RANGE 8 W
WELL No. 1 (SERIAL No. 119) FARM John J. Schut John J. Schut ACRES

NAME OF STREAM OR WATERS _____ QUADRANGLE CW¹ SW-SE

OPERATOR Freeman Oil Company Map Richland Township, Missaukee County

660660 Freeman Oil Co.
Feet from North Line of Farm

Richland - Miss

_____ " " East " " "

_____ " " South " " "

330330 " " West " " "

_____ Feet from North Line of Section

_____ " " East " " "

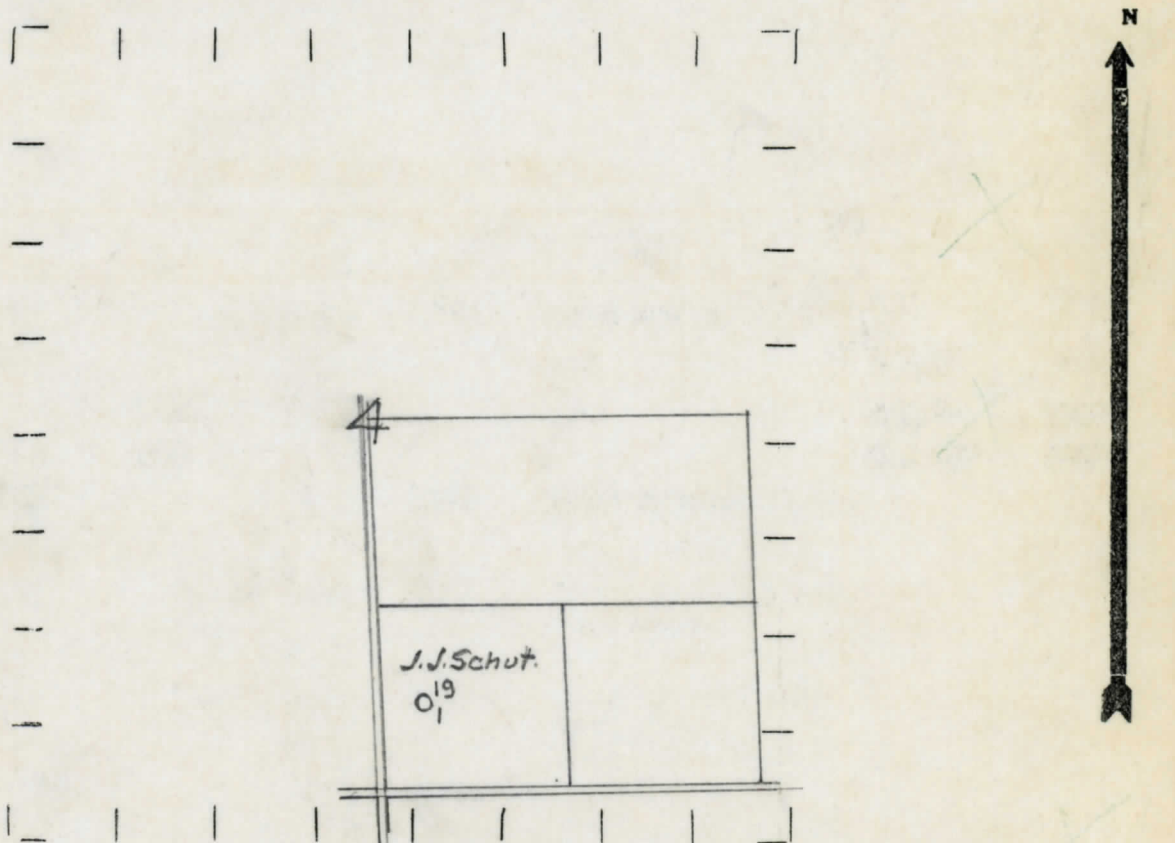
660660 " " South " " "

330330 " " West " 1/4 "

LEGEND

- LOCATION
- ⊙ RIG
- ⊕ DRILLING
- ☀ GAS WELL
- OIL WELL
- ⬮ SMALL OIL WELL
- ⊖ DRY HOLE
- ⬮ DRY SHOWING OIL
- ☀ DRY SHOWING GAS
- ⊖ ABANDONED LOCATION
- ☀ ABANDONED GAS WELL
- ⬮ ABANDONED OIL WELL

NOTE: Below make tracing from map, (when no map is obtainable make sketch) showing farm, center of section, this location with measurements and also wells, dry holes, or other locations in the vicinity of this location.



REMARKS:

SIGNED

Superintendent or Foreman.

Michigan Producing Division

Date July 7, 1939 No. 19
 State Mich. County Missaukee ~~Dixie~~ Twp. Richland Sec. 4 Twp. 21 N Rge. 8 W
 Well No. 1 (Serial No.) 19 Farm John J. Schut Acres _____
 Operator Freeman Oil Company Information secured ~~from~~ Scouting Department By _____
 Date well started 2-21-39 Dated well completed 7-4-39 Elevation 1280.8

PRODUCTION RECORD

1st 24 hours natural Dry Hole
 2nd 24 hours natural _____
 Date of shot _____ No. of quarts _____ From _____ to _____ From _____ to _____
 Date of acid _____ No. of gallons _____
 1st 24 hours after acid _____ shot
 2nd 24 hours after acid _____ shot

FORMATION AND CASING RECORD

Formation	Top	Bottom	Top Pay	Bottom Pay	Remarks	Casing	
						Size	Set at
Mich. Stray	1415		1435	1450	Salt water.	14"	310
Marshall	1510					8-1/4"	1202
Red Rock		1682				6-5/8"	1707
Antrim	2915	3275				5-3/16"	3949
Traverse Line	3308			3350	Salt water-2000 ft.		
Dundee	3950						
Monroe	4021		4034	4041	Small show oil and salt water.		
			4051	4056	Small increase in salt water.		
			4105	4112	Show black oil.		
			4135	4141	Show green oil.		
			4151	4160	Salt water-1200 ft.		
Total Depth		4160					

Remarks 1559' C.T.M. equals 1562' S.L.M.; 3764' C.T.M. equals 3768' S.L.M.; 3919' C.T.M. equals 3915' S.L.M.; 3964' C.T.M. equals 3959' S.L.M.

Signed D. C. Shackelford