



Western Michigan University  
ScholarWorks at WMU

---

Legacy Scout Tickets from Pure Oil Company

---

8-20-2021

## MGRRE\_PureOilScoutTickets\_Sparta State Bank\_1\_unk

MGRRE

*Western Michigan University*

Follow this and additional works at: <https://scholarworks.wmich.edu/pure>



Part of the Geology Commons

---

### WMU ScholarWorks Citation

MGRRE, "MGRRE\_PureOilScoutTickets\_Sparta State Bank\_1\_unk" (2021). *Legacy Scout Tickets from Pure Oil Company*. 5842.

<https://scholarworks.wmich.edu/pure/5842>

This Document is brought to you for free and open access via ScholarWorks at WMU. It has been accepted for inclusion in Legacy Scout Tickets from Pure Oil Company by an authorized administrator of ScholarWorks at WMU. See the National Digital Catalogue - Science Base Catalogue for more collections submitted by MGRRE.



---

**MGRRE\_PureOilScoutTickets\_Sparta State Bank\_1\_unk**

API unk

Permit Number unk

Lease Name Sparta State Bank

Well Number 1

County Missaukee

Township 21N

Range 07W

Section 20

2021 DEQ or Pure co\_name Pure Oil Company

Pure Number 20

Latitude 44.2008774

Longitude -85.1839937

THE PURE OIL COMPANY

DATE Feb. 15, 1939

LOCATION REPORT

No. 20

STATE Mich COUNTY Missaukee DIST. Riverside SEC. 20 TOWN 21-N RANGE 7W.

WELL No. 1 (SERIAL No. 20) FARM Sparta State Bank ACRES 160

NAME OF STREAM OR WATERS \_\_\_\_\_ QUADRANGLE SW-SW-NE.

OPERATOR Pure Oil Co (Core Test) Map Riverside - Missaukee Co

\_\_\_\_\_ Feet from North Line of Farm

\_\_\_\_\_ " " East " " "

530 " " South " " "

330 " " West " " "

\_\_\_\_\_ Feet from North Line of Section

\_\_\_\_\_ " " East " " "

550 " " South " "1/4"

330 " " West " "1/4"

LEGEND

○ LOCATION

⊙ RIG

⊕ DRILLING

☀ GAS WELL

● OIL WELL

⦿ SMALL OIL WELL

⊖ DRY HOLE

⦿ DRY SHOWING OIL

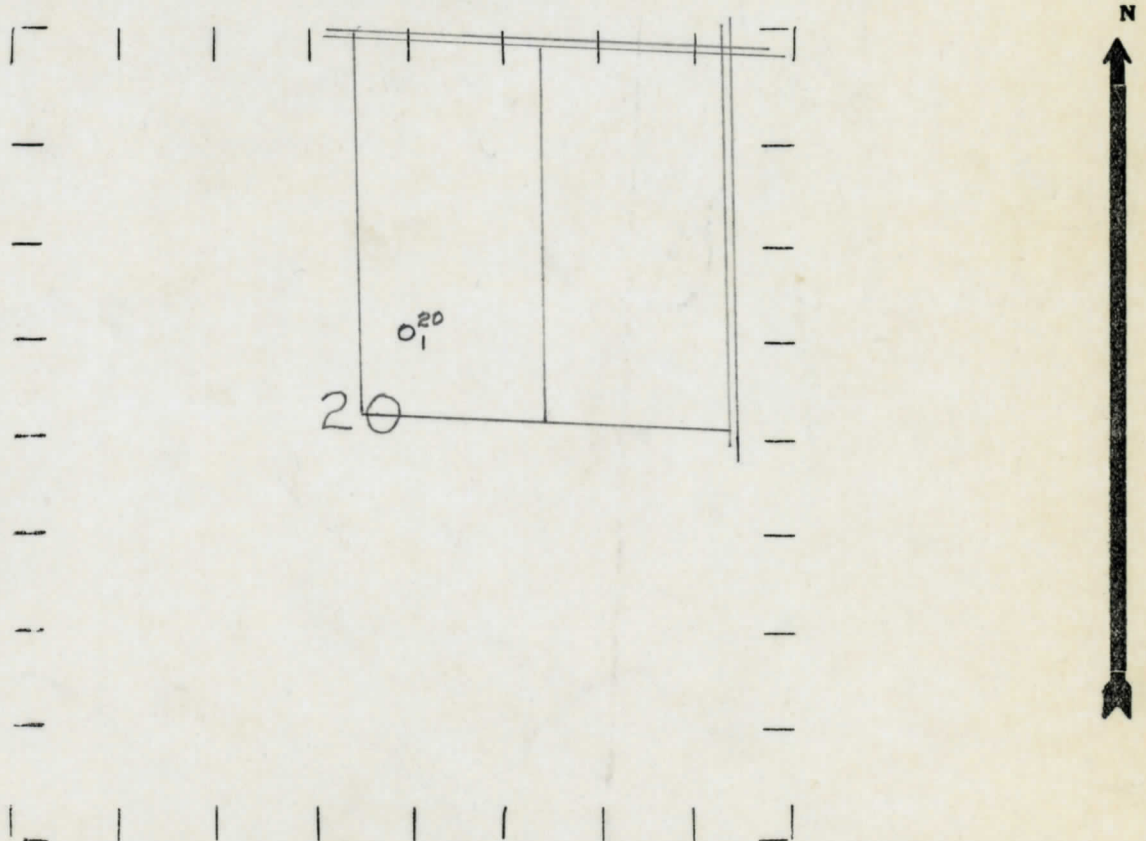
⊖ DRY SHOWING GAS

⊖ ABANDONED LOCATION

☀ ABANDONED GAS WELL

⦿ ABANDONED OIL WELL

NOTE: Below make tracing from map, (when no map is obtainable make sketch) showing farm, center of section, this location with measurements and also wells, dry holes, or other locations in the vicinity of this location.



REMARKS:

SIGNED

*R. A. Jensen*

Superintendent or Foreman.