



Western Michigan University
ScholarWorks at WMU

Legacy Scout Tickets from Pure Oil Company

8-20-2021

MGRRE_PureOilScoutTickets_Symes, Roy F. Exec. (113338) __unk

MGRRE

Western Michigan University

Follow this and additional works at: <https://scholarworks.wmich.edu/pure>



Part of the Geology Commons

WMU ScholarWorks Citation

MGRRE, "MGRRE_PureOilScoutTickets_Symes, Roy F. Exec. (113338) __unk" (2021). *Legacy Scout Tickets from Pure Oil Company*. 5843.

<https://scholarworks.wmich.edu/pure/5843>

This Document is brought to you for free and open access via ScholarWorks at WMU. It has been accepted for inclusion in Legacy Scout Tickets from Pure Oil Company by an authorized administrator of ScholarWorks at WMU. See the National Digital Catalogue - Science Base Catalogue for more collections submitted by MGRRE.



MGRRE_PureOilScoutTickets_Symes, Roy F. Exec. (113338) __unk

API unk

Permit Number unk

Lease Name Symes, Roy F. Exec. (113338)

County Missaukee

Township 21N

Range 08W

Section 12

2021 DEQ or Pure co_name Pure Oil Company

Pure Number 21

Latitude 44.2300577

Longitude -85.2246785

THE PURE OIL COMPANY

LOCATION REPORT

DATE March 29 1939

No. 21

STATE Mich COUNTY Missaukee DIST. Richland SEC. 12 TOWN 21 N RANGE 8 W

WELL No. _____ (SERIAL No. _____) FARM Roy. F. Symes, Exec. (113338) 320 ACRES

NAME OF STREAM OR WATERS _____ QUADRANGLE SE-SW-SE

OPERATOR Pure Oil Co. (Core Test) Map Richland-Missaukee

Feet from North Line of Farm

100 " " East " " "
1200 " " South " " "
" " West " " "

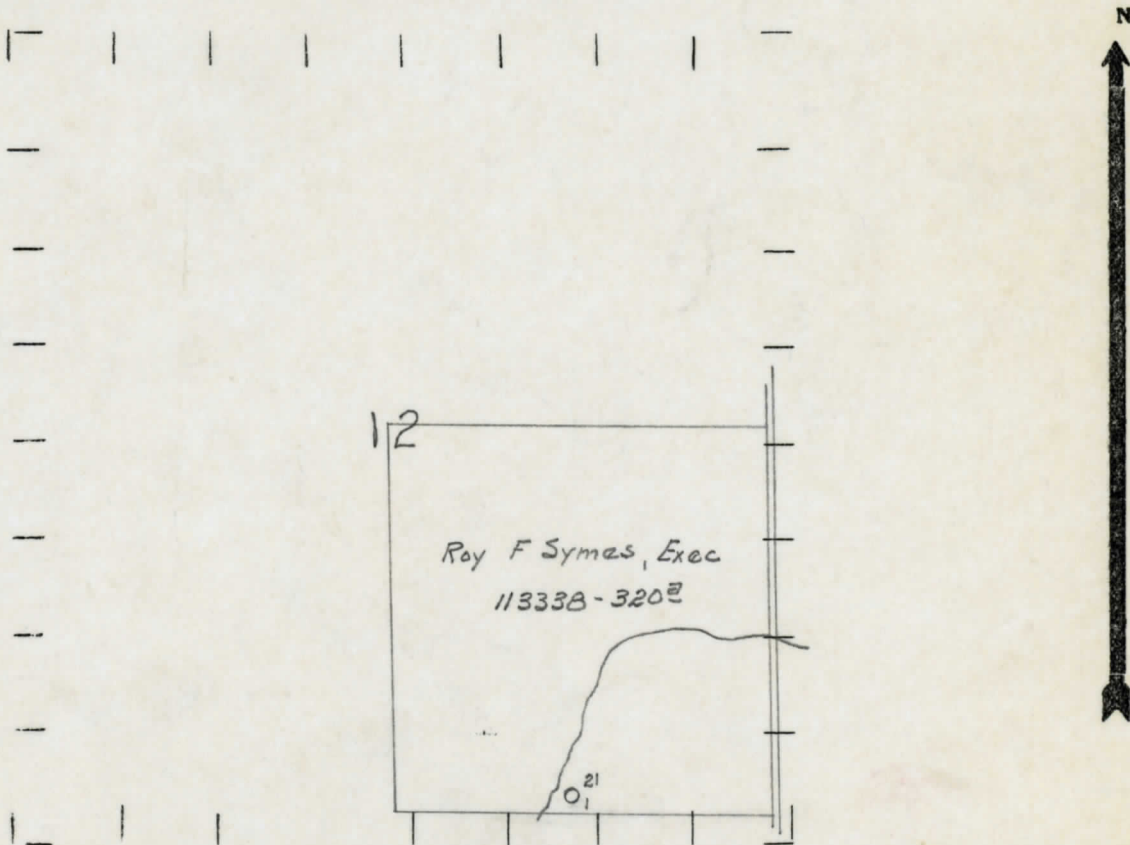
Feet from North Line of Section

100 " " East " " "
1200 " " South " " "
" " West " " $\frac{1}{4}$

LEGEND

- LOCATION
- ⊕ RIG
- ⊕ DRILLING
- ☀ GAS WELL
- OIL WELL
- ⊕ SMALL OIL WELL
- ⊕ DRY HOLE
- ⊕ DRY SHOWING OIL
- ⊕ DRY SHOWING GAS
- ⊕ ABANDONED LOCATION
- ☀ ABANDONED GAS WELL
- ⊕ ABANDONED OIL WELL

NOTE: Below make tracing from map, (when no map is obtainable make sketch) showing farm, center of section, this location with measurements and also wells, dry holes, or other locations in the vicinity of this location.



REMARKS:

SIGNED

R. A. Yeager
Superintendent or Foreman