



Western Michigan University
ScholarWorks at WMU

Legacy Scout Tickets from Pure Oil Company

8-20-2021

MGRRE_PureOilScoutTickets_McBain, John W. (113268)_1_None

MGRRE

Western Michigan University

Follow this and additional works at: <https://scholarworks.wmich.edu/pure>



Part of the Geology Commons

WMU ScholarWorks Citation

MGRRE, "MGRRE_PureOilScoutTickets_McBain, John W. (113268)_1_None" (2021). *Legacy Scout Tickets from Pure Oil Company*. 5844.

<https://scholarworks.wmich.edu/pure/5844>

This Document is brought to you for free and open access via ScholarWorks at WMU. It has been accepted for inclusion in Legacy Scout Tickets from Pure Oil Company by an authorized administrator of ScholarWorks at WMU. See the National Digital Catalogue - Science Base Catalogue for more collections submitted by MGRRE.



MGRRE_PureOilScoutTickets_McBain, John W. (113268)_1_None

API None

Permit Number None

Lease Name McBain, John W. (113268)

Well Number 1

County Missaukee

Township 22N

Range 07W

Section 32

2021 DEQ or Pure co_name Pure Oil Company

Pure Number 22

Latitude 44.2590971

Longitude -85.1847301

THE PURE OIL COMPANY

LOCATION REPORT

No. 22

DATE April 27, 1939

STATE Mich COUNTY Missaukee DIST. Reeder TWP. Reeder SEC. 32 TOWN 22 N RANGE 7 W.

WELL No. 1 (SERIAL No. 22) FARM John W. McBain (113268) 200 ACRES

NAME OF STREAM OR WATERS QUADRANGLE NW-SW-SW.

OPERATOR Pure Oil Co. (Core Test) Map Reeder Twp - Missaukee Co.

Feet from North Line of Farm

East " " "

730 South " " "

150 West " " "

Feet from North Line of Section

East " " "

730 South " " "

150 West " " "

LEGEND

○ LOCATION

⊕ RIG

⊕ DRILLING

☀ GAS WELL

● OIL WELL

⊕ SMALL OIL WELL

⊕ DRY HOLE

⊕ DRY SHOWING OIL

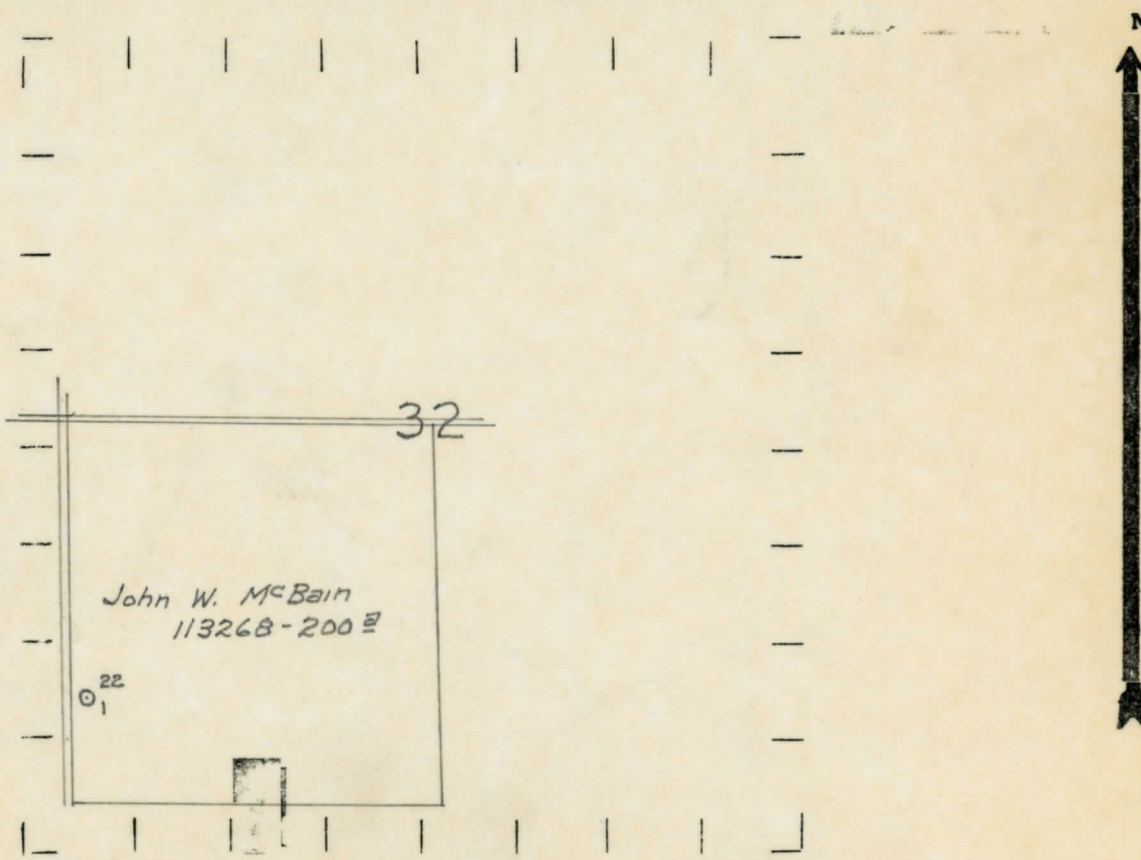
⊕ DRY SHOWING GAS

⊕ ABANDONED LOCATION

☀ ABANDONED GAS WELL

⊕ ABANDONED OIL WELL

NOTE: Below make tracing from map, (when no map is obtainable make sketch) showing farm, center of section, this location with measurements and also wells, dry holes, or other locations in the vicinity of this location.



REMARKS:

SIGNED

R. L. Ysager

Superintendent or Foreman.