



Western Michigan University
ScholarWorks at WMU

Legacy Scout Tickets from Pure Oil Company

8-20-2021

MGRRE_PureOilScoutTickets_Claude W. Allen_1_None

MGRRE

Western Michigan University

Follow this and additional works at: <https://scholarworks.wmich.edu/pure>



Part of the Geology Commons

WMU ScholarWorks Citation

MGRRE, "MGRRE_PureOilScoutTickets_Claude W. Allen_1_None" (2021). *Legacy Scout Tickets from Pure Oil Company*. 5847.

<https://scholarworks.wmich.edu/pure/5847>

This Document is brought to you for free and open access via ScholarWorks at WMU. It has been accepted for inclusion in Legacy Scout Tickets from Pure Oil Company by an authorized administrator of ScholarWorks at WMU. See the National Digital Catalogue - Science Base Catalogue for more collections submitted by MGRRE.



MGRRE_PureOilScoutTickets_Claude W. Allen_1_None

API None

Permit Number GT0026

Lease Name Claude W. Allen

Well Number 1

County Missaukee

Township 23N

Range 5W

Section 10

2021 DEQ or Pure co_name Pure Oil Company

Pure Number 25

Latitude 44.400198

Longitude -84.896775

THE PURE OIL COMPANY

DATE Oct. 25, 1939

LOCATION REPORT

No. 25

STATE Mich. COUNTY Missaukee DIST. TWP. Enterprise SEC. 10 TOWN 23 N RANGE 5 W.

WELL No. 1 (SERIAL No. 25) FARM Claude W. Allen. ACRES

NAME OF STREAM OR WATERS _____ QUADRANGLE NE-NE-SE.

OPERATOR Pure Oil Co. (Core Test) Map Enterprise Twp-Missaukee Co.

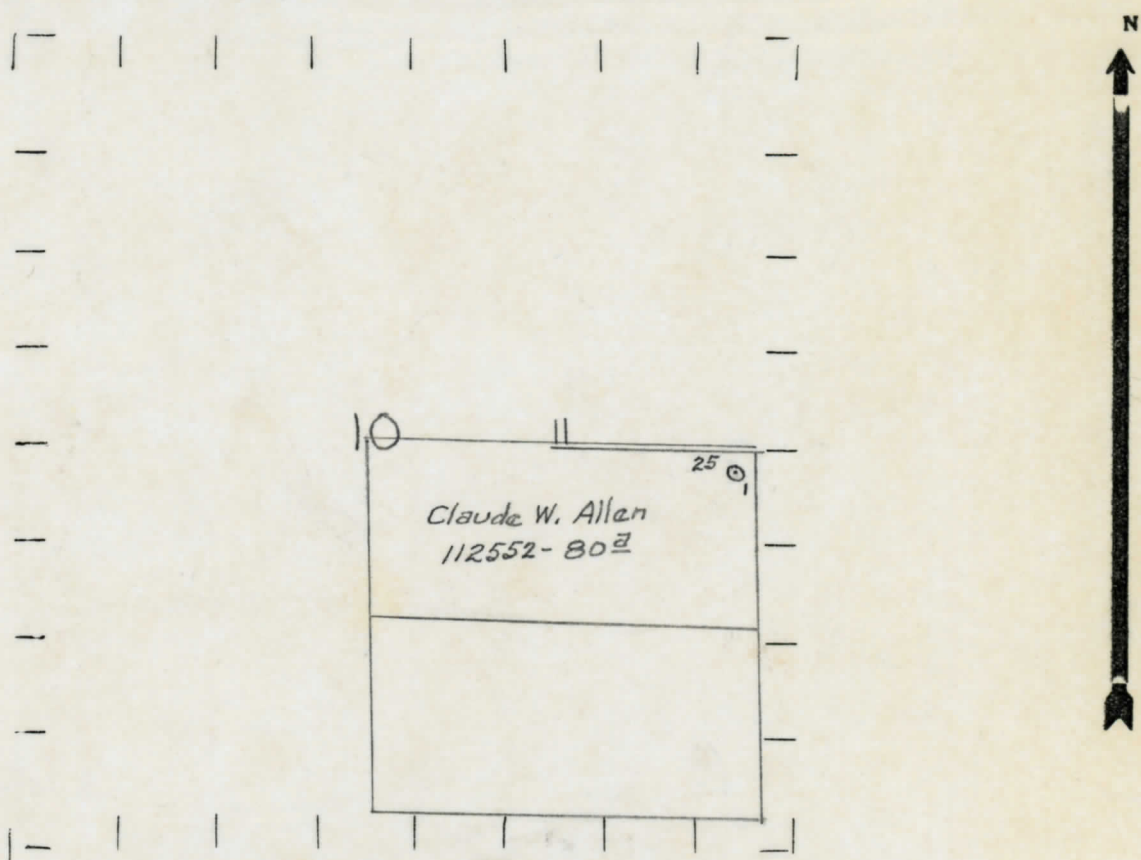
160 Feet from North Line of Farm
140 " " East " " "
" " South " " "
" " West " " "

160 Feet from North Line of $\frac{1}{4}$ Section
140 " " East " " "
" " South " " "
" " West " " "

LEGEND

- LOCATION
- ⊕ RIG
- ⊕ DRILLING
- ☀ GAS WELL
- OIL WELL
- ⦿ SMALL OIL WELL
- ⊖ DRY HOLE
- ⦿ DRY SHOWING OIL
- ☀ DRY SHOWING GAS
- ⊖ ABANDONED LOCATION
- ☀ ABANDONED GAS WELL
- ⦿ ABANDONED OIL WELL

NOTE: Below make tracing from map, (when no map is obtainable make sketch) showing farm, center of section, this location with measurements and also wells, dry holes, or other locations in the vicinity of this location.



REMARKS:

SIGNED

R. R. Yeager,

Superintendent or Foreman.