



Western Michigan University
ScholarWorks at WMU

Legacy Scout Tickets from Pure Oil Company

8-20-2021

MGRRE_PureOilScoutTickets_State Easement_16_None

MGRRE

Western Michigan University

Follow this and additional works at: <https://scholarworks.wmich.edu/pure>



Part of the Geology Commons

WMU ScholarWorks Citation

MGRRE, "MGRRE_PureOilScoutTickets_State Easement_16_None" (2021). *Legacy Scout Tickets from Pure Oil Company*. 5849.

<https://scholarworks.wmich.edu/pure/5849>

This Document is brought to you for free and open access via ScholarWorks at WMU. It has been accepted for inclusion in Legacy Scout Tickets from Pure Oil Company by an authorized administrator of ScholarWorks at WMU. See the National Digital Catalogue - Science Base Catalogue for more collections submitted by MGRRE.



MGRRE_PureOilScoutTickets_State Easement_16_None

API None

Permit Number GT0049

Lease Name State Easement

Well Number 16

County Missaukee

Township 24N

Range 05W

Section 33

2021 DEQ or Pure co_name Pure Oil Company

Pure Number 27

Latitude 44.429851

Longitude -84.926077

THE PURE OIL COMPANY

LOCATION REPORT

No. 27

DATE Dec. 11, 1939

STATE Mich COUNTY Missaukee DIST. Norwich SEC. 33 TOWN 24 N RANGE 5 W

WELL No. 16 (SERIAL No. 27) FARM _____ ACRES _____
PREC. State Easement.

NAME OF STREAM OR WATERS _____ QUADRANGLE SW-SW-NE

OPERATOR Pure Oil Co. (Core Test) Map Norwich Twp - Missaukee Co.

_____ Feet from North Line of Farm

_____ " " East " " "

_____ " " South " " "

_____ " " West " " "

_____ Feet from North Line of Section

_____ " " East " " "

160 " " South " "1/4"

100 " " West " "1/4"

LEGEND

○ LOCATION

⊕ RIG

⊕ DRILLING

☀ GAS WELL

● OIL WELL

⊕ SMALL OIL WELL

⊕ DRY HOLE

⊕ DRY SHOWING OIL

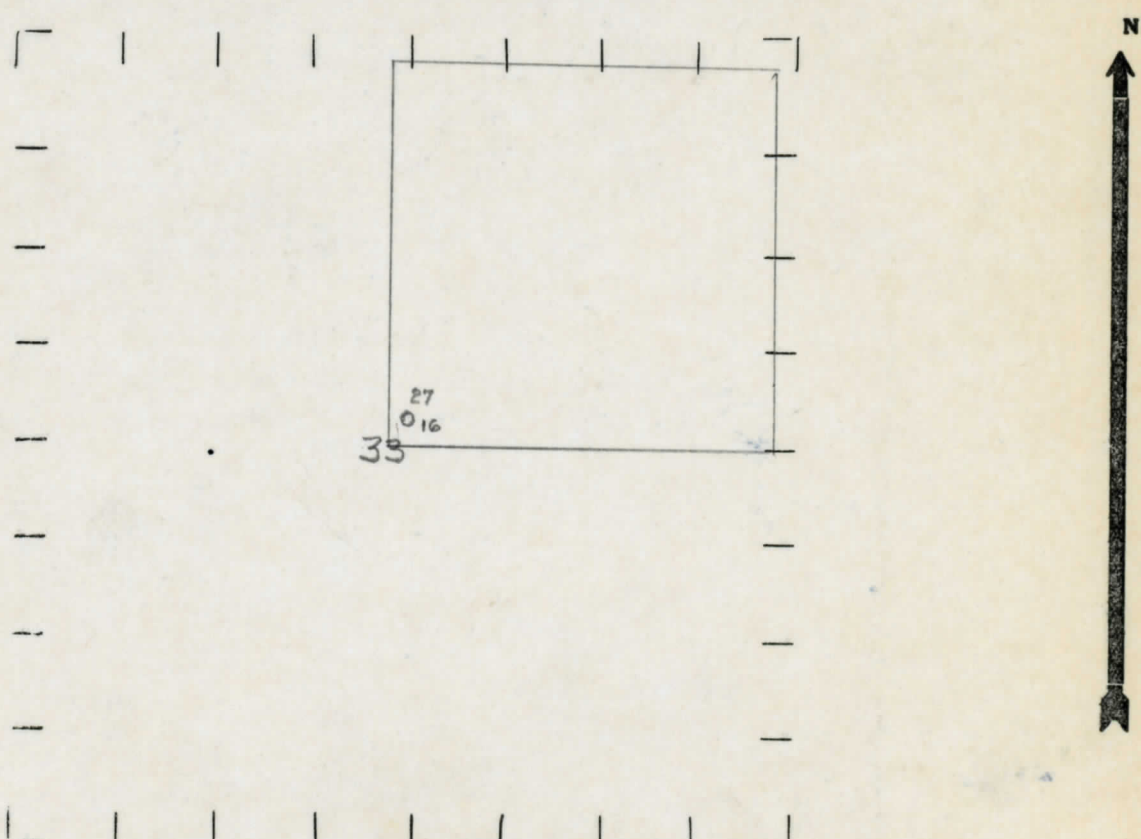
⊕ DRY SHOWING GAS

⊕ ABANDONED LOCATION

☀ ABANDONED GAS WELL

⊕ ABANDONED OIL WELL

NOTE: Below make tracing from map, (when no map is obtainable make sketch) showing farm, center of section, this location with measurements and also wells, dry holes, or other locations in the vicinity of this location.



REMARKS:

SIGNED

R. P. Yeager
Superintendent or Foreman.