



Western Michigan University  
ScholarWorks at WMU

---

Legacy Scout Tickets from Pure Oil Company

---

8-20-2021

## MGRRE\_PureOilScoutTickets\_William Pearson Pure Core Test #66\_1\_None

MGRRE

*Western Michigan University*

Follow this and additional works at: <https://scholarworks.wmich.edu/pure>



Part of the Geology Commons

---

### WMU ScholarWorks Citation

MGRRE, "MGRRE\_PureOilScoutTickets\_William Pearson Pure Core Test #66\_1\_None" (2021). *Legacy Scout Tickets from Pure Oil Company*. 5853.  
<https://scholarworks.wmich.edu/pure/5853>

This Document is brought to you for free and open access via ScholarWorks at WMU. It has been accepted for inclusion in Legacy Scout Tickets from Pure Oil Company by an authorized administrator of ScholarWorks at WMU. See the National Digital Catalogue - Science Base Catalogue for more collections submitted by MGRRE.



---

**MGRRE\_PureOilScoutTickets\_William Pearson Pure Core Test #66\_1\_None**

API None

Permit Number GT0059

Lease Name William Pearson Pure Core Test #66

Well Number 1

County Missaukee

Township 21N

Range 05W

Section 28

2021 DEQ or Pure co\_name Pure Oil Company

Pure Number 31

Latitude 44.18108

Longitude -84.931729

THE PURE OIL COMPANY

LOCATION REPORT

No. 31

DATE Feb. 20, 1940

STATE Mich COUNTY Missaukee DIST. TWP. Holland. SEC. 28 TOWN 21 N. RANGE 5W.

WELL No. 1 (SERIAL No. 31) FARM Wm S. Pearson. ACRES

NAME OF STREAM OR WATERS QUADRANGLE NW-NW-SW.

OPERATOR Pure Oil Co. (Core Test) Map Holland-Missaukee

500 Feet from North Line of Farm

East " " "

South " " "

200 West " " "

500 Feet from North Line of Section

East " " "

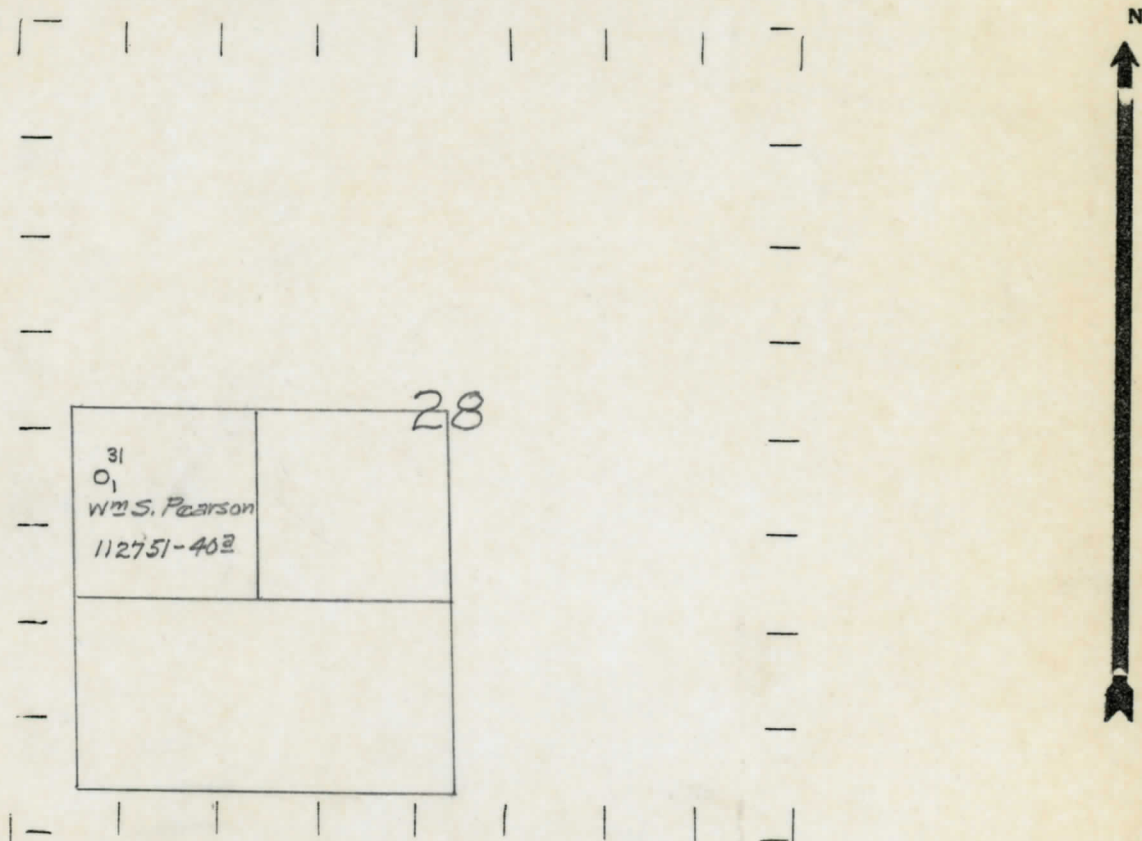
South " " "

200 West " " "

LEGEND

- LOCATION
- ⊕ RIG
- ⊕ DRILLING
- ☀ GAS WELL
- OIL WELL
- ⬮ SMALL OIL WELL
- ⊖ DRY HOLE
- ⬮ DRY SHOWING OIL
- ☀ DRY SHOWING GAS
- ⊖ ABANDONED LOCATION
- ☀ ABANDONED GAS WELL
- ⬮ ABANDONED OIL WELL

NOTE: Below make tracing from map, (when no map is obtainable make sketch) showing farm, center of section, this location with measurements and also wells, dry holes, or other locations in the vicinity of this location.



REMARKS:

SIGNED

R. L. Yeager

Superintendent or Foreman.