



Western Michigan University
ScholarWorks at WMU

Legacy Scout Tickets from Pure Oil Company

8-20-2021

MGRRE_PureOilScoutTickets_Gray_1_21113087120000

MGRRE

Western Michigan University

Follow this and additional works at: <https://scholarworks.wmich.edu/pure>



Part of the Geology Commons

WMU ScholarWorks Citation

MGRRE, "MGRRE_PureOilScoutTickets_Gray_1_21113087120000" (2021). *Legacy Scout Tickets from Pure Oil Company*. 5867.

<https://scholarworks.wmich.edu/pure/5867>

This Document is brought to you for free and open access via ScholarWorks at WMU. It has been accepted for inclusion in Legacy Scout Tickets from Pure Oil Company by an authorized administrator of ScholarWorks at WMU. See the National Digital Catalogue - Science Base Catalogue for more collections submitted by MGRRE.



MGRRE_PureOilScoutTickets_Gray_1_21113087120000

API 21113087120000

Permit Number 8712

Lease Name Gray

Well Number 1

County Missaukee

Township 23N

Range 05W

Section 33

2021 DEQ or Pure co_name Twin Drilling Company

Pure Number 46

Latitude 44.33957

Longitude -84.92965

THE PURE OIL COMPANY

DATE June 25, 1941

LOCATION REPORT

No. 46

STATE Michigan

COUNTY Missaukee

Missaukee

TWP. Enterprise

SEC. 33

TOWN 23 N

RANGE 5 W

WELL No. 1 (SERIAL No. 46) FARM

PREC. Gray

ACRES

NAME OF STREAM OR WATERS

QUADRANGLE E SW

OPERATOR Twin Drilling Company

Map

Enterprise Township, Missaukee County

Twin Drilling Co.

Enterprise - Missaukee

Feet from North Line of Farm

" " East " " "

1320 1320 " " South " " "

1320 1320 " " West " " "

Feet from North Line of Section

" " East " " "

1320 1320 " " South " " 1/4

1320 1320 " " West " " "

LEGEND

○ LOCATION

⊕ RIG

⊕ DRILLING

☀ GAS WELL

● OIL WELL

⬮ SMALL OIL WELL

⊙ DRY HOLE

⬮ DRY SHOWING OIL

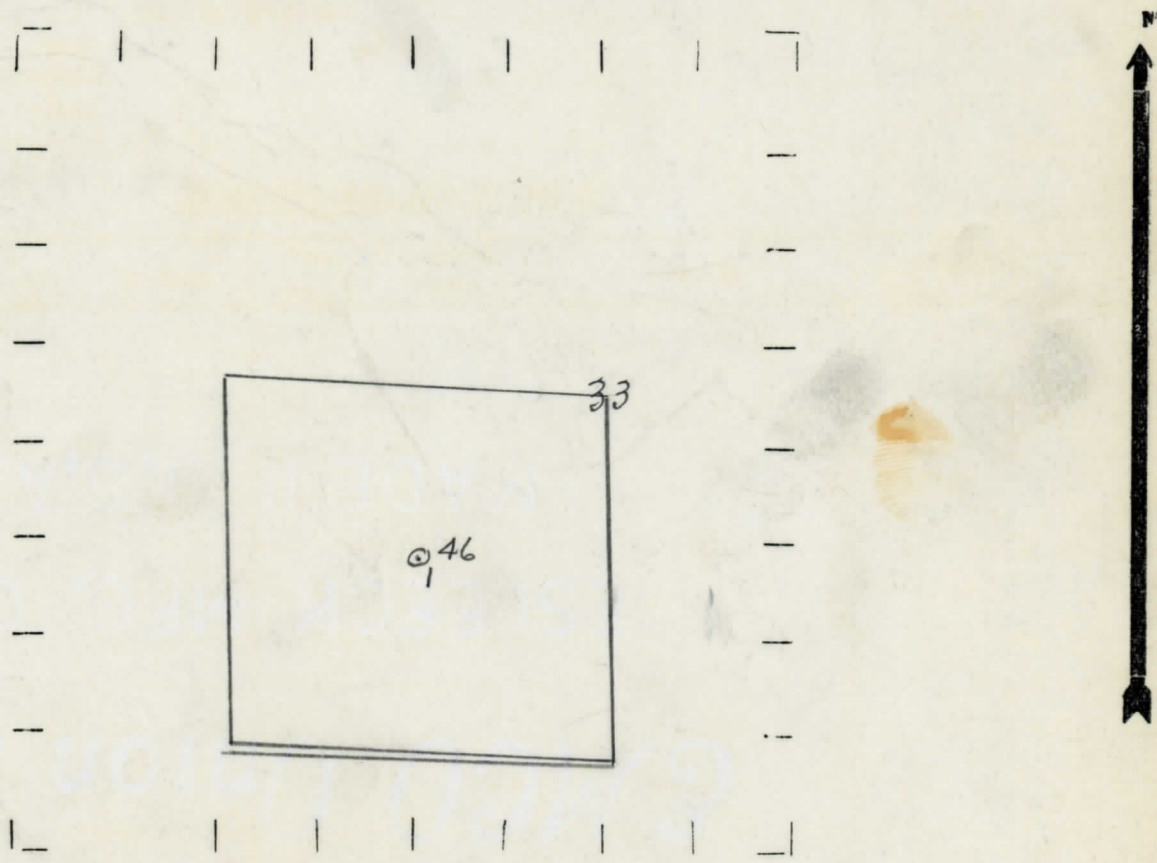
⊙ DRY SHOWING GAS

⊙ ABANDONED LOCATION

☀ ABANDONED GAS WELL

⬮ ABANDONED OIL WELL

NOTE: Below make tracing from map, (when no map is obtainable make sketch) showing farm, center of section, this location with measurements and also wells, dry holes, or other locations in the vicinity of this location.



REMARKS:

SIGNED

W

Superintendent or Foreman.

Date **July 2, 1941** No. **46**
 State **Mich.** County **Missaukee** District **Enterprise** Sec. **33** Twp. **23 N** Rge. **5 W**
 Well No. **1** (Serial No.) **46** Farm **Gray** Acres _____
 Operator **Twin Drilling Company** Information secured ~~xxxx~~ **Scouting Department**
 Date well started **6-23-41** Date well completed **6-29-41** Elevation **1134.0**

PRODUCTION RECORD

1st 24 hours natural **Dry Hole**
 2nd 24 hours natural _____
 Date of shot _____ No. of quarts _____ From _____ to _____ From _____ to _____
 Date of acid _____ No. of gallons _____
 shot
 1st 24 hours after acid _____
 shot
 2nd 24 hours after acid _____

FORMATION AND CASING RECORD

Formation	Top	Bottom	Top Pay	Bottom Pay	Remarks	Casing	
						Size	Set at
Stray	982		989	994½	Sulphur water.	6"	60
Total Depth		994½				4"	965

Remarks _____

Signed **D. C. Shackelford**