



Western Michigan University
ScholarWorks at WMU

Legacy Scout Tickets from Pure Oil Company

8-20-2021

**MGRRE_PureOilScoutTickets_Bodery, Jager,
Schurman_27_21113089480000**

MGRRE
Western Michigan University

Follow this and additional works at: <https://scholarworks.wmich.edu/pure>



Part of the Geology Commons

WMU ScholarWorks Citation

MGRRE, "MGRRE_PureOilScoutTickets_Bodery, Jager, Schurman_27_21113089480000" (2021). *Legacy Scout Tickets from Pure Oil Company*. 5875.
<https://scholarworks.wmich.edu/pure/5875>

This Document is brought to you for free and open access via ScholarWorks at WMU. It has been accepted for inclusion in Legacy Scout Tickets from Pure Oil Company by an authorized administrator of ScholarWorks at WMU. See the National Digital Catalogue - Science Base Catalogue for more collections submitted by MGRRE.



MGRRE_PureOilScoutTickets_Bodery, Jager, Schurman_27_21113089480000

API 21113089480000

Permit Number 8948

Lease Name Bodery, Jager, Schurman

Well Number 27

County Missaukee

Township 21N

Range 07W

Section 21

2021 DEQ or Pure co_name Taggart Brothers Gas Company

Pure Number 54

Latitude 44.20441

Longitude -85.16902

THE PURE OIL COMPANY

LOCATION REPORT

DATE September 10, 1941

No. 54

STATE Michigan

COUNTY Missaukee

RISK TWP Riverside

Riverside

SEC. 21

TOWN 31 N

RANGE 7 W

WELL No. 27 (SERIAL No. 54) FARM

Bodery-Jager-Schurman

ACRES

NAME OF STREAM OR WATERS

QUADRANGLE 31 NW

OPERATOR Taggart Brothers Company

Map Riverside Township, Missaukee County

1320 1320 Feet from North Line of Farm

1320 1320 " " East " " "

" " South " " "

" " West " " "

Feet from North Line of Section

" " East " " "

1320 1320 " " South " 1/4"

1320 1320 " " West " " "

LEGEND

○ LOCATION

⊙ DRY HOLE

⊕ RIG

⊙ DRY SHOWING OIL

⊕ DRILLING

⊙ DRY SHOWING GAS

☀ GAS WELL

⊙ ABANDONED LOCATION

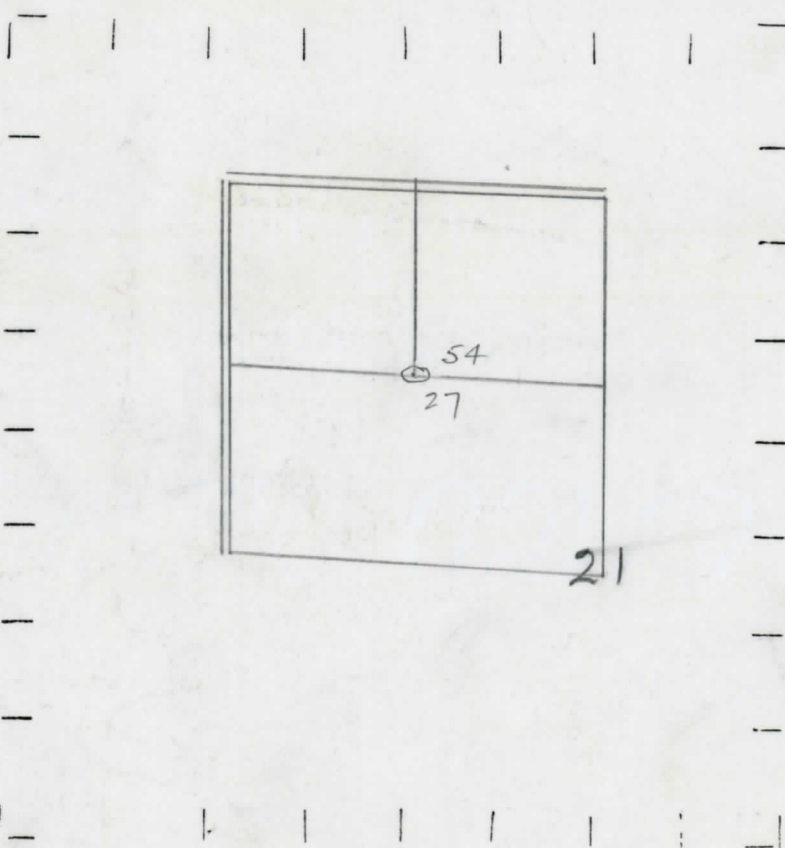
● OIL WELL

☀ ABANDONED GAS WELL

● SMALL OIL WELL

● ABANDONED OIL WELL

NOTE: Below make tracing from map, (when no map is obtainable make sketch) showing farm, center of section, this location with measurements and also wells, dry holes, or other locations in the vicinity of this location.



REMARKS:

SIGNED

W

Superintendent or Foreman.

T350 Leaf from North Line of East
 OBERVATOR THE PURE OIL COMPANY No. 5162196 - 4117788466
 DATE September 17, 1941 LOCATION REPORT Missouri
 NAME OF SURVEYOR OR MAINTENANCE MISSOURI
 STATE Missouri (SERIAL NO. 27) TWP. Bodery-Jager-Schurman TOWN 21 N RANGE 7 W
 WELL NO. 54

Date September 17, 1941 No. 54
 State Mich. County Missaukee ^{Rick.} Twp. Riverside Sec. 21 Twp. 21 N Rge. 7 W
 Well No. 27 (Serial No.) 54 Farm Bodery-Jager-Schurman Acres _____
 Operator Taggart Brothers Company Information secured ~~from~~ ^{By} Scouting Department
 Date well started 9-8-41 Date well completed 9-13-41 Elevation 1215.3

PRODUCTION RECORD

1st 24 hours natural Dry Hole
 2nd 24 hours natural _____
 Date of shot _____ No. of quarts _____ From _____ to _____ From _____ to _____
 Date of acid _____ No. of gallons _____
 1st 24 hours after acid shot _____
 2nd 24 hours after acid shot _____

FORMATION AND CASING RECORD

Formation	Top	Bottom	Top Pay	Bottom Pay	Remarks	Casing	
						Size	Set at
Stray	1412			1431	Show gas.	8-1/4"	347
				1432	Show oil.	5-3/16"	1412
				1456	Water.		
Total Depth		1460					

Remarks Brown Line at 1290'.

Signed D. C. Shackelford