



Western Michigan University
ScholarWorks at WMU

Legacy Scout Tickets from Pure Oil Company

8-20-2021

**MGRRE_PureOilScoutTickets_Burgess, Stone, &
Toland_93_21113093230000**

MGRRE

Western Michigan University

Follow this and additional works at: <https://scholarworks.wmich.edu/pure>



Part of the Geology Commons

WMU ScholarWorks Citation

MGRRE, "MGRRE_PureOilScoutTickets_Burgess, Stone, & Toland_93_21113093230000" (2021). *Legacy Scout Tickets from Pure Oil Company*. 5899.
<https://scholarworks.wmich.edu/pure/5899>

This Document is brought to you for free and open access via ScholarWorks at WMU. It has been accepted for inclusion in Legacy Scout Tickets from Pure Oil Company by an authorized administrator of ScholarWorks at WMU. See the National Digital Catalogue - Science Base Catalogue for more collections submitted by MGRRE.



MGRRE_PureOilScoutTickets_Burgess, Stone, & Toland_93_21113093230000

API 21113093230000

Permit Number 9323

Lease Name Burgess, Stone, & Toland

Well Number 93

County Missaukee

Township 21N

Range 07W

Section 29

2021 DEQ or Pure co_name Taggart Brothers Gas Company

Pure Number 78

Latitude 44.19006

Longitude -85.18862

THE PURE OIL COMPANY

Serial No. 78

Date December 17, 1941

LOCATION REPORT

A.F.E. No. _____

Division Mich. Producing

District _____

Burgess - Stone - Toland
Lease Burgess-Stone-Toland

Acres _____ Lease No. _____ Elevation _____ Well No. 93³

Quadrangle C NW NW Kotx 29 Twp. 21N Rge. 7W River Dist Riverside

Survey _____ County Missaukee State Michigan

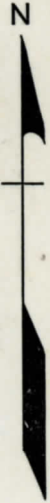
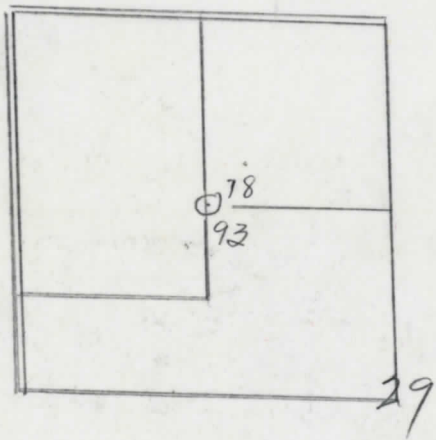
Operator Taggart Brothers Company Map Riverside Township, Missaukee County

		Feet North of South Line of Lease			
		East	West	"	"
<u>1320</u>	<u>1320</u>	"	South	North	" " "
<u>1320</u>	<u>1320</u>	"	West	East	" " "
		Feet North of South Line of Section			
		East	West	"	"
<u>1320</u>	<u>1320</u>	"	South	North	" " "
		"	West	East	" " "

Low

LEGEND

- Location
- ☀ Gas Well
- Oil Well
- or ○ Dry Hole
- or ● Dry Showing Oil
- ☀ Dry Showing Gas
- ⊗ Abandoned Location
- ☀ or ☀ Abandoned Gas Well
- or ● Abandoned Oil Well



Scale _____

Remarks: _____

Submitted by W _____ Approved by _____
Civil Engineer _____ Division Manager _____

Approved by _____
Vice-President - General Manager _____

