



Western Michigan University
ScholarWorks at WMU

Legacy Scout Tickets from Pure Oil Company

8-20-2021

**MGRRE_PureOilScoutTickets_Horner, Frank S,
Tr_3_21113098110000**

MGRRE
Western Michigan University

Follow this and additional works at: <https://scholarworks.wmich.edu/pure>



Part of the Geology Commons

WMU ScholarWorks Citation

MGRRE, "MGRRE_PureOilScoutTickets_Horner, Frank S, Tr_3_21113098110000" (2021). *Legacy Scout Tickets from Pure Oil Company*. 5913.
<https://scholarworks.wmich.edu/pure/5913>

This Document is brought to you for free and open access via ScholarWorks at WMU. It has been accepted for inclusion in Legacy Scout Tickets from Pure Oil Company by an authorized administrator of ScholarWorks at WMU. See the National Digital Catalogue - Science Base Catalogue for more collections submitted by MGRRE.



MGRRE_PureOilScoutTickets_Horner, Frank S, Tr_3_21113098110000

API 21113098110000

Permit Number 9811

Lease Name Horner, Frank S, Tr

Well Number 3

County Missaukee

Township 24N

Range 05W

Section 14

2021 DEQ or Pure co_name Merit Energy Company

Pure Number 105

Latitude 44.477839

Longitude -84.8855199

THE PURE OIL COMPANY

OTHER OPERATORS

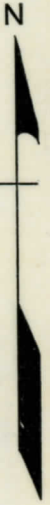
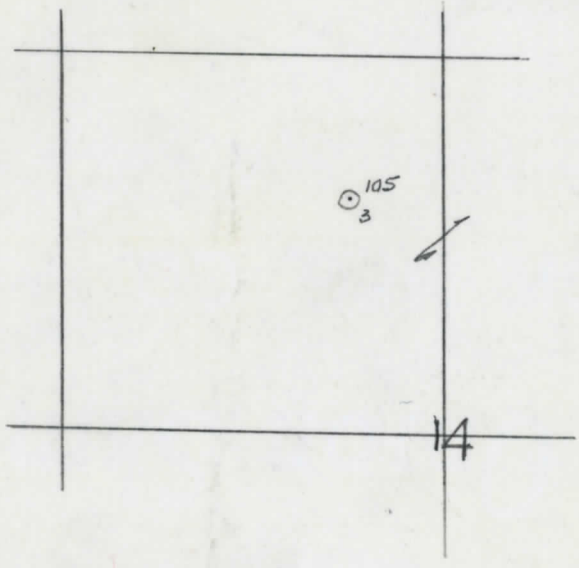
Date 9-30-42 A.F.E. No. _____
 Division Mich. Producing District _____ Lease Frank S. Horner Tr.
Frank S. Horner, Tr.
 Acres _____ Lease No. _____ Elevation _____ Well No. 3 (Serial No. 105)
 Quadrangle C S 1/2 NE NW Sec. 14 Twp. 24 N Rge. 5 W Twp. Norwich
 Survey _____ County Missaukee State Michigan
 Operator Sun Oil Co Map Norwich Twp - Missaukee Co
Sun Oil Company

<u>8910</u>	<u>8910</u>	Feet from North Line of Lease
		" " East " " "
		" " South " " "
<u>1980</u>	<u>1980</u>	Feet from North Line of Section
		" " East " " "
<u>990</u>	<u>990</u>	" " South " " "
<u>660</u>	<u>660</u>	" " West " " "

Res

LEGEND

- Location
- ☀ Gas Well
- Oil Well
- ☀ Gas - Distillate Well
- ∅ or ○ Dry Hole
- Dry Showing Oil
- ☀ Dry Showing Gas
- ⊗ Abandoned Location
- ☀ or ☀ Abandoned Gas Well
- or ● Abandoned Oil Well
- or ○ Input Well



Scale _____

Remarks: _____

Submitted by _____ Civil Engineer Approved by _____ Division Manager
 Approved by _____ Vice-President - General Manager

